



stinger

GTS PERFORMANCE FEATURES



STINGER GTS

This limited edition vehicle raises the bar even higher for driving enthusiasts. We've taken the world renowned performance of the Stinger and added more aesthetics and dynamic driving features. This guide provides an overview of some of the specific features available on the Stinger GTS. All other features and functions relating the operation of your Stinger GTS can be found in the Owner's Manual and Features & Functions Guide.

THIS VEHICLE IS DISTINGUISHED BY UNIQUE FEATURES FOUND ONLY ON THE LIMITED EDITION STINGER GTS.

INTERIOR

- ▶ Alcantara®^{†2} steering wheel and center console
- ▶ Headliner in premium suede-like Chamude®^{†3}

EXTERIOR

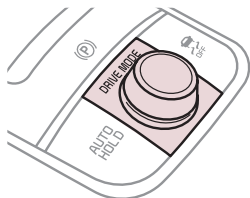
- ▶ Exclusive Federation Orange paint
- ▶ Genuine carbon fiber accents that outline the signature tiger nose grille, side mirror caps and side vents
- ▶ GTS rear emblem
- ▶ Centralized Stinger lettering replaces the Kia logo on the trunk lid for a more unique appearance

POWERTRAIN – ALL WHEEL DRIVE*

- ▶ The optional Dynamic – All Wheel Drive powertrain (D-AWD) has been enhanced with the addition of new control logic, and a rear axle mechanical limited slip differential which are designed to help enhance traction and distribute power more evenly in a variety of conditions.
- ▶ The Stinger's Drive Mode feature integrates with D-AWD and provides three selectable modes:
 - **COMFORT MODE** sends up to 60 percent of torque to the wheels to help enhance the feeling of stability
 - **SPORT MODE** sends up to 80 percent of torque to the wheels for more spirited driving
 - **DRIFT MODE** sends up to 100 percent of torque to the rear wheels and holds the transmission from upshifting when in manual shift mode

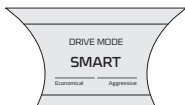
*If equipped.

† Legal disclaimers on back inside cover.



Drive Modes

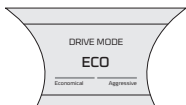
SMART, COMFORT, SPORT/CUSTOM* and **ECO** drive modes may be changed according to the driver's preference or road conditions. To change the drive mode, rotate the **DRIVE MODE** knob.



SMART Mode automatically adjusts the driving mode in accordance with the driver's driving habits.



COMFORT Mode is for those seeking smooth driving and a comfortable ride.



ECO Mode is designed to help fuel efficiency under certain conditions



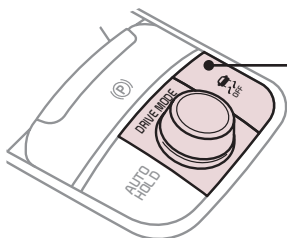
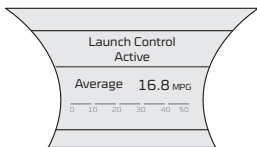
SPORT Mode provides a sporty but firm ride.



CUSTOM Mode allows the driver to mix aspects of other driving modes to make a customized mode.

Launch Control Operation[†]

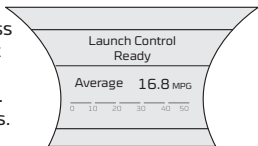
Launch Control is available when Drive Mode is in Sport Mode. Launch Control is designed to help maximize acceleration from a standing start.



With Drive Mode in Sport Mode

To turn on, press and hold the **ESC OFF** button for more than three seconds to disable both traction and stability controls.

To activate, with the left foot press brake pedal firmly while gear shift is in D (Drive) and then press the accelerator pedal fully to the floor. The LCD will display a ready status.



REMINDERS:

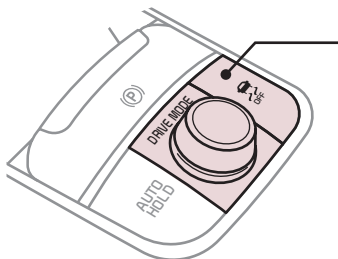
- ▶ When launching, stop vehicle and keep steering wheel straight
- ▶ The brake pedal, electric parking brake and Auto Hold must be released for smooth launching

[†] Legal disclaimers on back inside cover.



D – AWD is designed to vary the amount of power to each wheel in certain situations, either physically with differentials or transfer cases, or electronically with brake vectoring (where the brakes are used to slow down a specific wheel due to traction loss). When Drive Mode is placed in Drift Mode, up to 100% of torque will be transferred to the rear wheels.

Activating D-AWD Drift Mode*



With Drive Mode in **Sport Mode**

To turn on, press and hold the **ESC OFF** button for more than three seconds to disable both traction and stability controls.

You are now in **Drift Mode**.

REMINDERS:

- ▶ There are no indicators to show Drift Mode is active.

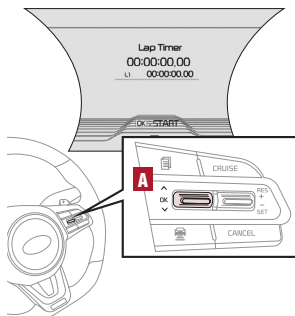
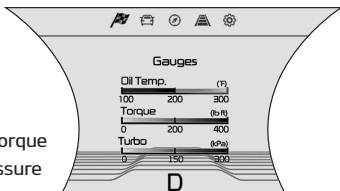


*If equipped.

† Legal disclaimers on back inside cover.

COMBINATION OIL TEMP, TORQUE, & TURBO

- Shows the engine oil temperature
- Displays calculated instantaneous engine torque
- Shows turbo boost pressure

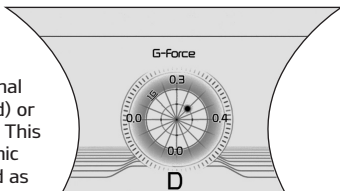


LAP TIMER

1. Press **OK A** on the steering wheel to start the timer
2. Press **OK** again at the end of each lap
3. Press and hold **OK** to stop the timer
4. Afterwards, press and hold **OK** to reset the timer

G-FORCE

G-Force is a measurement of acceleration: longitudinal (forward and rearward) or lateral (left and right). This gauge displays a graphic with G-Force indicated as a dot. G-Force numerical values are displayed outside of the graphic.



When the vehicle quickly accelerates or turns, the dot will move indicating the direction of the G-Force along with its instantaneous values.



Elegant and functional at the same time, Alcantara® combines qualities such as softness, and richness of color, and is stain resistant and easy to maintain.

Alcantara®^{†2} Maintenance

Daily cleaning: It is sufficient to dust Alcantara using a soft brush, a dry cloth, or a vacuum cleaner.

Weekly cleaning: After having dusted Alcantara, run a slightly moistened white cotton cloth over it. Avoid the use of printed absorbent cloths/papers as they can release ink onto the material.

stinger

95

rtinger

93

Driving while distracted is dangerous and should be avoided. Drivers should remain attentive to driving and always exercise caution when using the steering-wheel-mounted controls while driving.

Driving while distracted can result in a loss of vehicle control that may lead to an accident, severe personal injury and death. The driver's primary responsibility is in the safe and legal operation of a vehicle, and use of any handheld devices, other equipment or vehicle systems which take the driver's eyes, attention and focus away from the safe operation of a vehicle or that are not permissible by law should never be used during operation of the vehicle.

Dynamic All-Wheel Drive Features: No system, no matter how advanced, can compensate for all driver error and/or driving conditions. Always drive safely and obey all traffic laws.

¹ **Launch Control or D-AWD Drift Mode**

When using Launch Control or D-AWD Drift Mode, always ensure the engine's cooling temperature is in the normal operating temperature range.

Launch Control and D-AWD Drift Mode are not intended for use on public roads, and should not be used when traffic or pedestrians are present. No system, no matter how advanced, can compensate for all driver error and/or driving conditions and it is the driver's responsibility to ensure it is safe before using these systems. Always drive safely and obey all traffic laws.

Kia recommends waiting until after the vehicle break-in process is complete before using Launch Control or D-AWD Drift Mode. Persistent use of these systems can result in premature wear of vehicle components.

² **Alcantara** is a registered trademark of Alcantara S.p.A.

³ **Chamude** is a registered trademark of Kolon Industries, Inc.





P/N: UD190-KU-050

© 2019 KIA MOTORS AMERICA, INC. ALL RIGHTS RESERVED.

CONSUMER - ROADSIDE ASSISTANCE: 1-800-333-4KIA (4542)