



CADENZA

FEATURES & FUNCTIONS GUIDE

www.kia.com

Consumer - Roadside Assistance

1-800-333-4KIA (4542)

See Back Cover for Vehicle Maintenance Schedule

Always check the Owner's Manual for complete operating information and safety warnings.

GETTING TO KNOW YOUR **CADENZA**

Congratulations on Your New Kia Purchase!

Your new Kia vehicle has been designed, engineered and manufactured to provide you with years of comfortable and dependable driving. Kia is committed to quality, innovation, safety and — above all — your satisfaction.

Using This Guide

The information contained in this guide is a brief overview that will help you become familiar with the operation and features of your new Kia vehicle. The flipbook format facilitates information access, while the detailed illustrations ensure the instructions are easy to follow.

This **Features & Functions Guide** and the specific operational and safety information it provides is not a substitute for your Owner's Manual. In the interest of your safety and that of your family, and to help you avoid risks that may result in death or serious injury, Kia reminds you to carefully read your Owner's Manual in order to fully familiarize yourself with the important information it contains.

While the information contained in this guide is accurate at the time of printing, Kia may change vehicle specifications without notice in advance or after the fact, and assumes no liability in connection with such changes.

ESSENTIAL FEATURES

Air Conditioning / Automatic Climate Control	25
Audio System – Navigation System	22
Aux/USB/iPod®* Port* & Power Outlets*	24
<i>Bluetooth</i> ® Wireless Technology	18
Cruise Control*	21
Clock	24
Passenger Airbag Off Indicator	39
Service Mode	07
Smart Key	32
Tire Pressure Monitoring System (TPMS)	05
Trip Computer / Tripmeter	06
User Settings	07
Windshield Wipers & Washers	17

Driving while distracted can result in a loss of vehicle control that may lead to an accident, severe personal injury and death. The driver's primary responsibility is in the safe and legal operation of a vehicle, and use of any handheld devices, other equipment or vehicle systems which take the driver's eyes, attention and focus away from the safe operation of a vehicle or that are not permissible by law should never be used during operation of the vehicle.



VIDEOS & QR CODES	02
-----------------------------	----

INSTRUMENT CLUSTER

Instrument Cluster Overview	03
Indicators & Warning Lights	04
Tire Pressure Monitoring System (TPMS)	05
Fuel Economy	05
LCD Instrument Cluster Modes	06
Trip Computer / Tripmeter	06
User Settings	07
Service Mode	07

DRIVER'S PANEL

Electronic Stability Control (ESC)	08
Hill-Start Assist Control (HAC)	08
Blind Spot Detection (BSD) System*	09
Lane Departure Warning System (LDWS)*	10
Instrument Panel Dimmer	10
Power Windows, Window Lock & Central Door Lock	11
Power Folding Outside Mirrors	11
Heated Outside Mirrors*	11
Automatic Door Lock/Unlock	11
Reverse Parking Aid Function*	12
Fuel Door and Trunk Release Buttons	12
Engine Start/Stop Button	13

STEERING WHEEL CONTROLS

Manual Tilt/Telescoping Steering Wheel*	14
Power Tilt/Telescoping Steering Wheel*	14
Headlights & High Beams	15
Turn Signals & Fog Lights	16
Windshield Wipers & Washers	17
<i>Bluetooth</i> ® Wireless Technology	18
Advanced Smart Cruise Control (ASCC)*	20
Audio Controls	21
Cruise Control*	21

CENTER PANEL

Navigation System	22
Surround View Monitor (SVM)*	23
Clock	24
Aux/USB/iPod® Port & Power Outlets	24
Automatic Climate Control	25
Automatic Gear Shift / Sportmatic® Shifting	26
Electric Parking Brake*	27
Auto Hold*	27
Heated Steering Wheel*	28
Power Rear Sunshade*	28
Seat Warmers / Ventilated Seats*	29

SEATING

Power Adjustable Driver's Seat	30
Front Seat Headrest Adjustment	31
Driver Position Memory System*	31

OTHER KEY FEATURES

Smart Key	32
HomeLink® with Auto-Dimming Rearview Mirror	33
Map/Room Lamps	34
Panoramic Sunroof Operation*	35
Sunvisor	35
Rear-Camera Display	36
Back-Up Warning System (Rear Parking Assist System)*	36
Trunk Release Button	37
Fuel Cap / Malfunction Indicator (Check Engine Light)	37
Child Safety Locks	37
Hood Release Lever and Latch	38

SAFETY FEATURES

Occupant Detection System (ODS) /	
Passenger Airbag Off Indicator	39
Seat Belts	40
Seat Belt Retractor Inertial Locks	40

LEGAL DISCLAIMERS (See Back Inside Cover Page)

MAINTENANCE (See Back Cover)

*IF EQUIPPED

Kia provides a number of video resources at your disposal to assist you with becoming familiar with the features and functions found in your Kia vehicle. You can access these resources by snapping the QR Codes with your smartphone/tablet (mobile devices) or by visiting the following website: www.KuTechVideos.com/vg13/2015. Continue reading for a more in-depth look at QR Codes and for instructions on how to use them.

What are QR Codes?

A QR Code is a square, 2-dimensional barcode that can be read by mobile devices loaded with an appropriate barcode or QR Code Reader App. The app reads the barcode image and then launches/uploads the specific information the code contains, such as URLs, text, photos, videos and so much more.

How to Use QR Codes

If you have a mobile device with a QR Code Reader App, you can snap the code with your phone and you'll be provided a video with additional information pertaining to the topic. For example, in the Fuel Cap section, if you would like additional information, just snap the code with your mobile device to view the selected Kia Features & Functions Video.

How to snap a QR Code

1. With your mobile device, download a QR Code Reader App. With many devices, you can do this through an app store or marketplace
2. Open the QR Code Reader App on your mobile device
3. The app will utilize your device's camera. Center the code in the camera viewing area:
 - With some apps, as soon as the app recognizes the code, it will launch the corresponding video
 - With other apps, you will have to snap or take a picture of the code. The app will then launch the corresponding video
 - For operation specifics, refer to the instructions that come with the QR Code Reader App

QR CODE

One-Click Fuel Cap Video

To view a video on your mobile device, snap this QR Code or visit the listed website.



www.KuTechVideos.com/vg13/2015

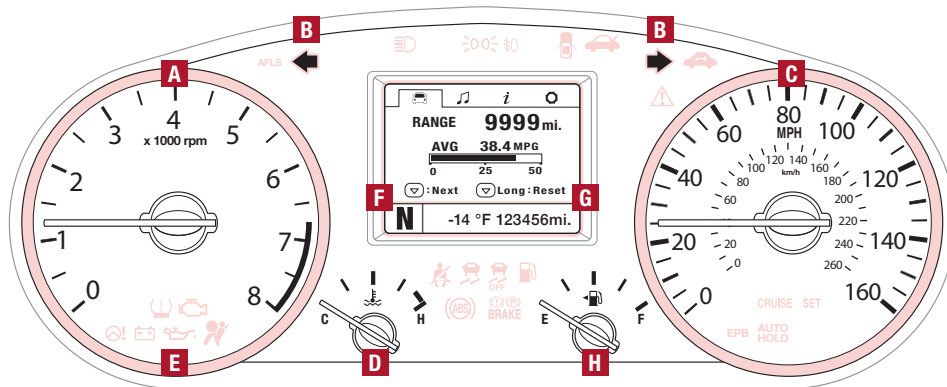
REMINDER: When accessing videos on your mobile device, standard cellular data rates may apply.

QUICK TIPS

1. If you're having trouble scanning codes, check the following:
 - The code should be centered and focused in your mobile device's camera screen
 - Consider moving your device closer to or farther away from the code
 - The code should be well lit, without significant shadow
 - Avoid scanning from a significant angle
 - Confirm that the device's app supports 2D QR Code scanning.
 - Try another QR Code Reader App; not all apps are created equal
2. After scanning, if a "connecting" message appears and then nothing happens or there's a "connection error" message, this typically indicates that your device is having trouble connecting to the Internet
3. When accessing videos on your mobile device, standard cellular data rates will apply

Instrument Cluster Overview

- A** Tachometer
- B** Turn Signal Indicators
- C** Speedometer
- D** Engine Temperature Gauge
- E** Indicators & Warning Lights
- F** Gear Shift Position Indicator
- G** Odometer/Trip Computer/Tripmeter
- H** Fuel Gauge

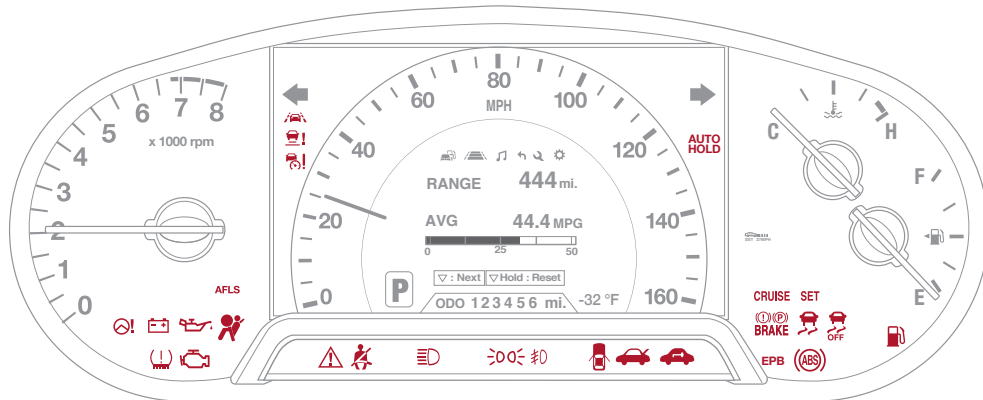


REMINDER: Your vehicle's instrument cluster & indicator light locations may differ from those in the illustrations. See your Owner's Manual for more details.

ⓘ QUICK TIP

For more information on the function of all indicator and warning lights, please refer to the Owner's Manual.

Indicators & Warning Lights



(Type B Cluster)


REMINDER: Your vehicle's instrument cluster & indicator light locations may differ from those in the illustrations. See your Owner's Manual for more details.


QUICK TIP


For more information on the function of all indicator and warning lights, please refer to the Owner's Manual.


- | | | | | | |
|-------------|----------------------------------------------------------------------------------------|--|--------------------------------------------------|--|------------------------------------------------------|
| | Electronic Power Steering Warning Light | | Advanced Smart Cruise Control Warning Indicator* | | Auto Hold Indicator |
| | Charging System Warning Light | | Master Warning Light | | Cruise Indicator |
| | Low Tire Pressure Light / Tire Pressure Monitoring System (TPMS) Malfunction Indicator | | Seat Belt Warning Light | | Cruise SET Indicator |
| | Engine Oil Pressure Warning Light | | High Beam Indicator | | Parking Brake & Brake Fluid Warning Light |
| | Malfunction Indicator | | Light on Indicator | | Electric Parking Brake |
| | Airbag Warning Light | | Front Fog Light Indicator | | Electronic Stability Control (ESC) Warning Indicator |
| AFLS | Adaptive Front Lighting System Warning Light* | | Door Ajar Warning Light | | Electronic Stability Control (ESC) OFF Indicator |
| | Lane Departure Warning Light | | Trunk Open Warning Light | | Anti-Lock Braking System (ABS) Warning Light |
| | Advanced Smart Cruise Control Radar Warning Light* | | Immobilizer Indicator* | | Low Fuel Level Warning Light |

Tire Pressure Monitoring System (TPMS)

The TPMS indicator  functions as both Low Tire Pressure Light and TPMS Malfunction Indicator.

The indicator  will illuminate if one or more tires is significantly underinflated, the vehicle has a spare tire installed without TPMS or the outside temperature becomes significantly lower.

Inflate tire(s) to specifications using an accurate digital tire pressure gauge to turn off Low Tire Pressure Light . See front driver's door jamb for PSI specification.

When there is a problem with the TPMS, the TPMS Malfunction Indicator  will blink for approximately one minute then illuminate. See dealer for service.

Fuel Economy

There are several factors that contribute to your vehicle's fuel economy, including maintenance of your vehicle, driving style, environmental conditions, vehicle weight and vehicle aerodynamics. Below are tips on how to help improve fuel economy:

- Keep your vehicle in good condition with regular maintenance
- Don't let the engine idle longer than necessary
- Drive at a moderate speed, accelerating smoothly and at a moderate rate
- Keep tires inflated to the recommended pressure
- Travel lightly, without carrying unnecessary weight in your vehicles
- Avoid placing large or heavy items on roof racks
- Avoid hilly, winding or poorly maintained roads

REMINDER: Driving range varies depending on a vehicle's fuel tank size, e.g.12-gal.vs.24-gal. Even though the two vehicles MPG may be the same, the vehicle with the larger tank will have the greater range.

For more information on Fuel Economy, you can snap the QR code above to view a video or refer to the brochure "GETTING MORE OUT OF EVERY GALLON, FUEL-SAVING TIPS TO DRIVE BY" available at your local dealership.

QUICK TIPS

- Even with TPMS, tire pressure should be checked manually at least once a month. Only adjust tire pressure on "cold tires"
- For proper maintenance and optimal fuel economy, maintain recommended tire inflation pressures and stay within the load limits and weight distribution recommended for your vehicle
- In winter or cold weather, the TPMS light may illuminate if the tire pressure was adjusted to the recommended tire inflation pressure during warm weather

REMINDER: Consult your dealer for service if Low Tire Pressure Light remains illuminated after inflating your tire(s).

QR CODES

To view a video on your mobile device, snap this QR Code or visit the listed website.

Refer to page 2 for more information.

Tire Pressure Monitoring System



www.KuTechVideos.com/vg13/2015

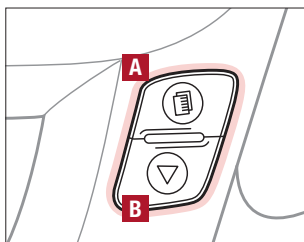
Fuel Economy Video



www.KuTechVideos.com/vg13/2015

LCD Instrument Cluster Modes*

Press Mode/Select button **A** to scroll through different LCD Instrument Cluster Modes:



(Buttons located on Steering Wheel)

Type A Type B



Trip Computer Mode: Displays driving information for tripmeter, fuel economy, etc.



Advanced Smart Cruise Control (ASCC) / Lane Departure Warning System (LDWS)*: Displays the state of the ASCC and LDWS



A/V Mode: Displays the state of the A/V System



Turn-by-Turn Mode*: Displays the state of the Navigation system



Information Modes: Informs on service intervals and pressure status of each tire




User Settings Mode: Change settings of the doors, lamps and other features

Your vehicle's steering wheel buttons may differ from those in the illustrations.

Trip Computer / Tripmeter

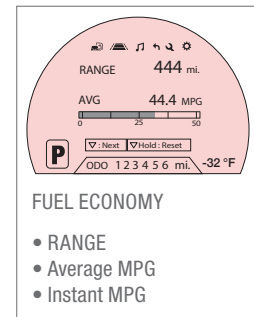
The Trip Computer is a driver information system that displays information related to driving on the display when the ENGINE START/STOP button is in the ON position.

To cycle through the LCD Instrument Cluster modes, press the Mode/Select button **A**.

When in the Trip Computer mode , press the Move/Reset button **B** to cycle through the screens. When displaying TRIP A or TRIP B screens, press and hold the Move/Reset button **B** to reset the Tripmeter to zero.

REMINDERS:

- Appearance of Tripmeter display may differ as equipped
- All stored driving information (except Odometer and Range) is reset if the battery is disconnected



FUEL ECONOMY

- RANGE
- Average MPG
- Instant MPG

TRIP A


- Tripmeter A
- Average MPH
- Elapsed Time (E/T)

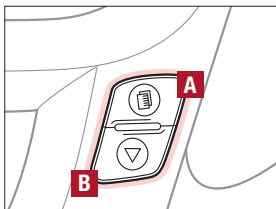
TRIP B

- Tripmeter B
- Average MPH
- Elapsed Time (E/T)

(Type B Cluster)

User Settings

To enter the User Settings mode in the LCD Instrument Cluster Modes, press the Mode/Select button **A** when the vehicle is at a standstill and with the ENGINE START/STOP button in the ON position and select User Settings .



(Buttons located on right side of steering wheel)

You can navigate the selections on the display by pressing the Move/Reset button **B**, and then selecting the item by pressing the Mode/Select button **A**.

Door:

- Auto Door Lock & Unlock
- Two Press Unlock
- Lock/Unlock Sound
- Horn Feedback

Lamp:

- One-Touch Turn Lamp
- Headlamp Delay
- Welcome Light*


Settings:

- Language
- Temperature Unit
- Speed Unit (Type B Cluster)*
- Speedometer Size (Type B Cluster)*
- AVG Fuel Economy Reset
- Easy Seat Access*
- Welcome Sound
- Steering Position

Service Interval:

- ON/OFF
- Set mileage/months

Service Mode

To enter Service Mode, press the Mode/Select button **A**, scroll to Service Mode  by pressing Move/Reset button **B**. Then press the Mode/Select button **A** to enter. System will display number of miles remaining until next service is due, and type of service.

When service is required, the following will be displayed: **Service Required.**

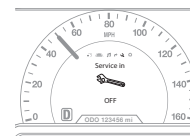
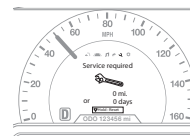
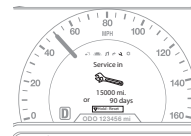
To reset the Service Mode system, press and hold the Move/Reset button **B** for more than 1 second.

To turn Service In OFF, go to User Settings.

Service Interval Setting

To set the service interval when in User Settings mode:

- Press the Move/Reset button **B** and scroll to Service Interval. Press the Mode/Select button **A** to enter
- Press the Move/Reset button **B** and toggle to ON, then press the Move/Select button **A**. Then press the Move/Reset button **B** to scroll and select the desired miles or months for your next service
- Press the Mode/Select button **A** to enter



(Type B cluster)

QR CODES

To view a video on your mobile device, snap these QR Codes or visit the listed website.

Refer to page 2 for more information.

LCD Display: Maintenance Video



www.KuTechVideos.com/vg13/2015

LCD Display Video



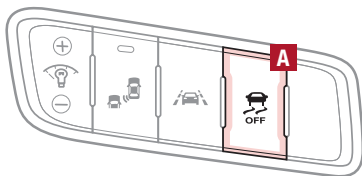
www.KuTechVideos.com/vg13/2015

Electronic Stability Control (ESC)

The ESC system is designed to help stabilize the vehicle during cornering maneuvers. It is a good idea to keep the ESC turned on for daily driving whenever possible.


Press ESC button **A** to turn Traction Control OFF/ON.

To turn OFF both the Traction Control and Stability Control, press and hold for more than 3 seconds. Press again to turn ON.



(Button panel located left of Steering Wheel)

REMINDERS:

- ESC is active by default at vehicle start-up
- The ESC Indicator Light  in the instrument cluster will illuminate whenever the ESC is in operation

For more information on Electronic Stability Control (ESC) and its specific features and operations, please refer to your Owner's Manual.

Hill-Start Assist Control (HAC)

HAC helps prevent the vehicle from rolling backwards when accelerating from a stop while on a steep incline. The HAC automatically activates whether the ESC is OFF or ON but does NOT activate when the ESC has malfunctioned.

REMINDER: The HAC does not operate when the gear shift is in the P (Park) or the N (Neutral) position.

🕒 QUICK TIP

When HAC is active (e.g., during initial acceleration from a stop on an incline), you may notice that the brakes will momentarily remain engaged after you depress the accelerator.

Blind Spot Detection (BSD) System*

The BSD system uses radar sensors to help alert the driver before changing lanes. The light on the BSD button **A** will illuminate when turned ON. The outside rearview mirror warning lights will also illuminate for 3 seconds.

The system will become active when the vehicle is traveling more than 9 mph and will alert the driver if another vehicle is detected by the radar sensor.

Blind Spot Detection / Lane Change Assist

1st-stage alert: When another vehicle is detected within the BSD System boundary **B**, a yellow indicator will illuminate on the outside rearview mirrors.

2nd-stage alert: When 1st-stage alert is on and the driver activates a turn signal, a flashing yellow indicator will illuminate on the outside rearview mirrors and the system will sound an alert.

RCTA (Rear Cross Traffic Alert)

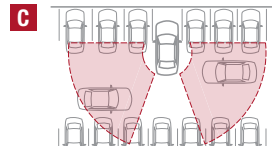
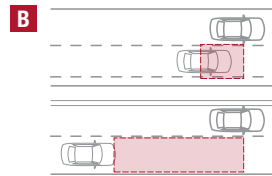
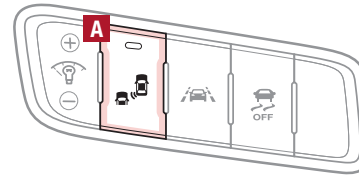
If the RCTA system sensors detect approaching vehicles from the left or right side **C**, the system will sound an audible alert, the warning indicators on the outside rearview mirror will illuminate and a message will appear on the LCD screen, when these conditions are met:

- When the gear shift is in Reverse
- When the vehicles moves in reverse
- When the vehicle is moving less than 6 mph

REMINDERS:

- When the BSD is ON and the ignition is cycled to OFF then ON again, the BSD system returns to ON
- The RCTA feature can be turned OFF/ON in User Settings

For more information on the Blind Spot Detection System, please refer to the Owner's Manual.



QR CODE

Blind Spot Detection System w/RCTA Video


To view a video on your mobile device, snap this QR Code or visit the listed website.

Refer to page 2 for more information.



www.KuTechVideos.com/vg13/2015

Lane Departure Warning System (LDWS)*

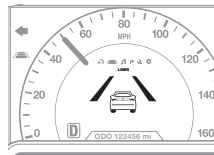
With the ENGINE START/STOP button in the ON position, press the LDWS button **C** to turn system ON. The instrument cluster indicator  will illuminate green.

If the LDWS detects that you are veering outside of your lane, the system may issue a warning on the LCD screen and an alert may sound, under these conditions:

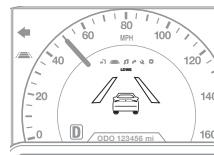
- The vehicle exceeds approximately 43 mph
- The LDWS system recognizes the lane the vehicle is traveling in

REMINDER: LDWS will not issue a warning if the turn signal is activated.

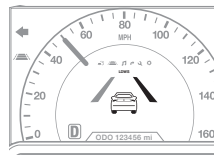
The Lane Departure Warning System (LDWS) is not a substitute for safe and proper driving. Always drive safely and use caution. LDWS may not always alert the driver if the vehicle is driven outside of it's lane.



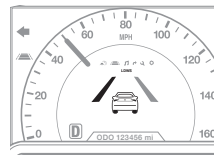
When the LDWS sensor detects the lane traveling in



When the LDWS sensor does not detect the lane traveling in



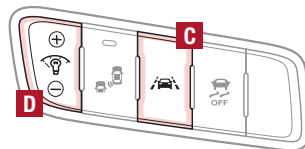
When the LDWS sensor detects the vehicle veering outside of the lane traveling in, a yellow indicator will illuminate



Instrument Panel Dimmer

With parking lights/headlights ON, press button **D** (+) or (-) to adjust the brightness of the instrument panel illumination.

REMINDER: The Instrument Panel Dimmer does not adjust brightness on the Navigation System screen, use Navigation setup to adjust brightness on the Navigation System.



(Button panel located left of Steering Wheel)

QR CODE

Lane Departure Warning System Video

To view a video on your mobile device, snap this QR Code or visit the listed website.

Refer to page 2 for more information.



www.KuTechVideos.com/vg13/2015

Power Windows, Window Lock & Central Door Lock

- A** Pull/Press to operate Driver's Window Auto Up/Down*
- B** Press to Unlock/Lock All Doors
- C** Press to disable Rear Passenger Windows

Power Folding Outside Mirrors

Toggle switch **D** left or right to select mirror. Then press arrows to adjust Power Folding Outside Mirror position.

Toggle button **E** left/right to unfold/fold the outside rearview mirrors.

Toggle button **E** to center to automatically fold/unfold mirrors when:

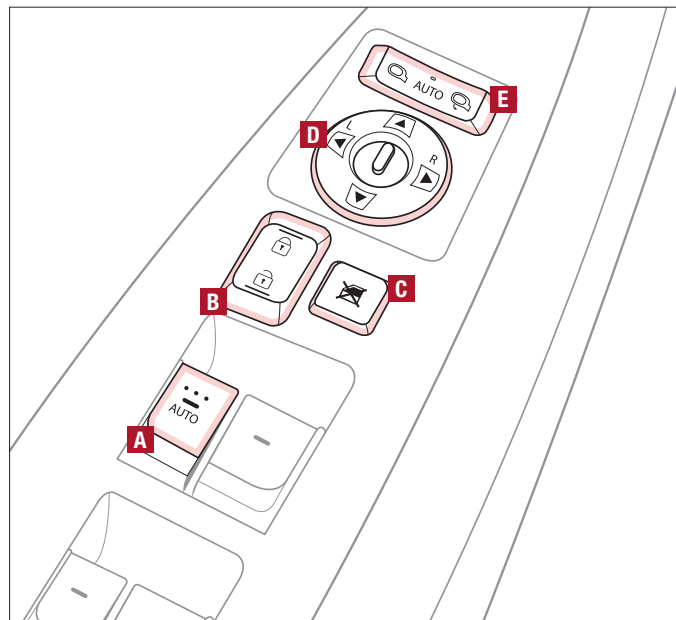
- The Smart Key Lock/Unlock buttons are pressed
- The door outside handle button is pressed

Ⓢ QUICK TIP

The mirrors will automatically unfold when the Smart Key* is within close proximity to the vehicle.

REMINDERS:

- To automatically fold mirrors when exiting vehicle, press the LOCK button twice on the Smart Key
- To lock position of mirrors, toggle switch to the neutral (center) position



(Buttons panel located on Driver's Door)

Heated Outside Mirrors*

Mirror heaters are controlled with Rear Defroster.

Automatic Door Lock/Unlock

Auto Door Lock/Unlock will engage when the gear shift is moved in to or out of the P (Park) position. Refer to the User Settings on how to turn Auto Door Lock/Unlock ON/OFF.

Reverse Parking Aid Function*

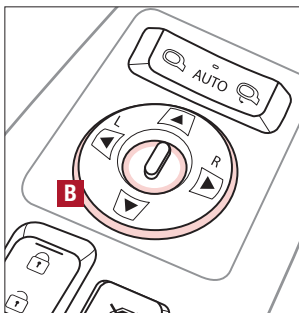
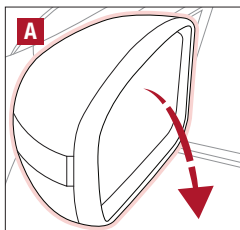
When the gear shift lever is moved into R (Reverse) and while the vehicle is moving backwards, the outside rearview mirrors **A** will rotate downward to aid in reverse parking.

To turn ON the Reverse Parking Aid Function, the outside mirror switch **B** needs to be in the left or right position.

To turn OFF, place outside mirror switch in the center position.

The outside rearview mirrors will automatically return to their original positions when:

- The ENGINE START/STOP Button is in the OFF position
- The gear shift lever is moved to any position except R (Reverse)
- Outside rearview mirror switch is in the middle position



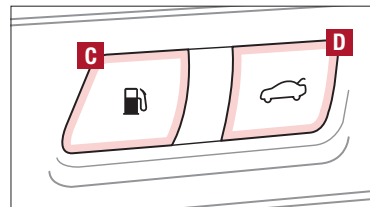
(Buttons panel located on Driver's Door)

REMINDER: When the outside rearview mirror switch **B** is in the middle position, the Reverse Parking Aid Function will not operate and the outside rearview mirrors will not rotate downward.

Fuel Door and Trunk Release Buttons

Press the **C** button to release the fuel door.

Press the **D** button to open the trunk.



(Buttons located left of Steering Wheel)

Engine Start/Stop Button

To start the engine:

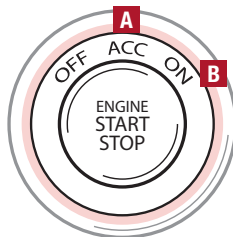
1. Depress the brake pedal
2. Press the ENGINE START/STOP button while in Park or Neutral

To turn the engine OFF, press the ENGINE START/STOP button.

To use the ENGINE START/STOP button, you must have the Smart Key fob on your person.

REMINDERS:

- In an emergency situation while the vehicle is in motion, you are able to turn the engine off and to the ACC position by pressing the ENGINE START/STOP button for more than 2 seconds or 3 times successively within 3 seconds
- If Smart Key fob battery is dead, with the lock button facing the ENGINE START/STOP button, hold the fob up against the ENGINE START/STOP button and press



🕒 QUICK TIPS

To use electrical accessories:

ACC position

- When in the OFF position and without depressing the brake pedal, press the ENGINE START/STOP button once (orange light **A**)

ON position

- When already in the ACC position (orange light **A**) and without depressing the brake pedal, press the ENGINE START/STOP button again (red light **B**)
- When in the OFF position and without depressing the brake pedal, press the ENGINE START/STOP button twice (red light **B**)

Keeping the vehicle in ACC or the ON position for extended periods of time without turning engine on may discharge the vehicle's battery.

📱 QR CODE

Engine Start/Stop Button & Smart Key Video

To view a video on your mobile device, snap this QR Code or visit the listed website.

Refer to page 2 for more information.

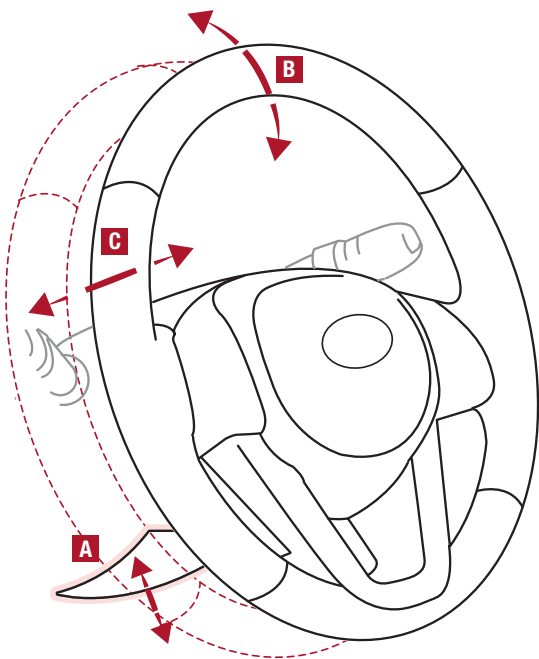


www.KuTechVideos.com/vg13/2015

Manual Tilt/Telescoping Steering Wheel*

To adjust the Steering Wheel, press the Lock-Release Lever **A** down and adjust **B** to desired angle and **C** distance.

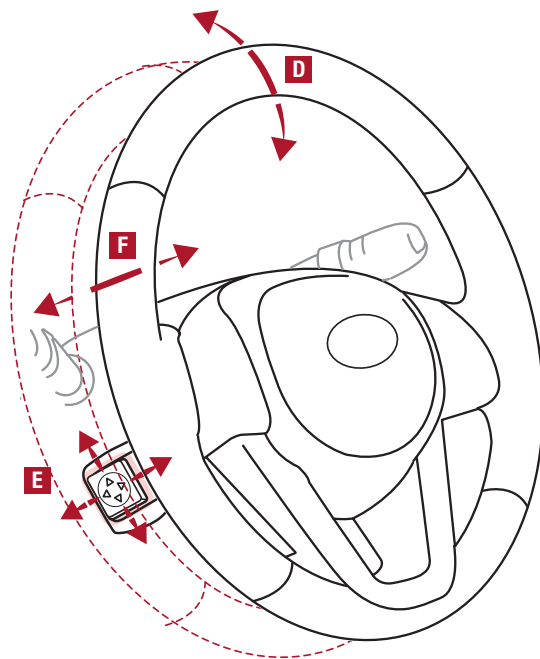
When finished, pull the Lock-Release Lever **A** up to lock Steering Wheel in place.



Power Tilt/Telescoping Steering Wheel*

To adjust the Steering Wheel angle **D**, move the switch **E** up or down.

To adjust the Steering Wheel distance **F**, move the switch **E** forward or backward.

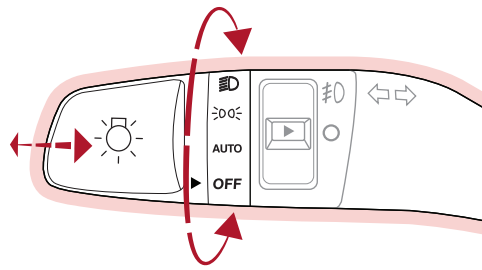


Headlights & High Beams

To operate:

- Rotate lever to change the Headlight function
- Push lever to turn High Beams ON
- Pull lever to flash Headlights/High Beams

AUTO Light function — When the light switch is in the AUTO Light position, the tail lights and headlights will turn ON/OFF automatically depending on the amount of light outside the vehicle.



Adaptive Front Lighting System (AFLS)*

The Adaptive Front Lighting System helps improve visibility during nighttime driving by aiming the low beam headlights in the direction the vehicle is moving. AFLS controls the aiming direction based on steering angle and speed.

When the light switch is in the AUTO Light position, the AFLS will activate.

REMINDER: When the AFLS indicator illuminates on the Instrument Cluster, the AFLS is not working properly. See authorized Kia dealer for service.

Turn Signals & Fog Lights*

To operate:

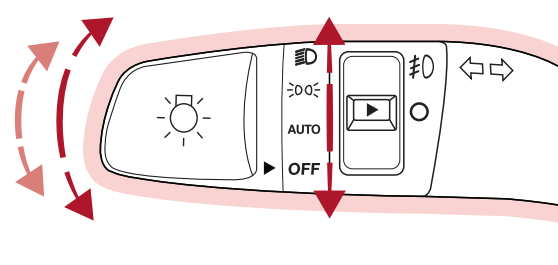
- Turn Signals - Move lever Up/Down for Right/Left Turn Signal
- Fog Lights - Push toggle switch to turn Fog Lights ON/OFF

REMINDER: Headlights must be ON for Fog Light operation.

One-Touch Lane Change Signal is activated by moving the Turn Signal Lever slightly for less than 1 second and then releasing. The lane change signal will blink 3 times.

To change how many times (3/5/7) the Lane Change Signal blinks, go to User Settings Mode in the LCD Instrument Cluster modes.

For more information on the User Settings Mode, please refer to your Owner's Manual.



Windshield Wipers & Washers

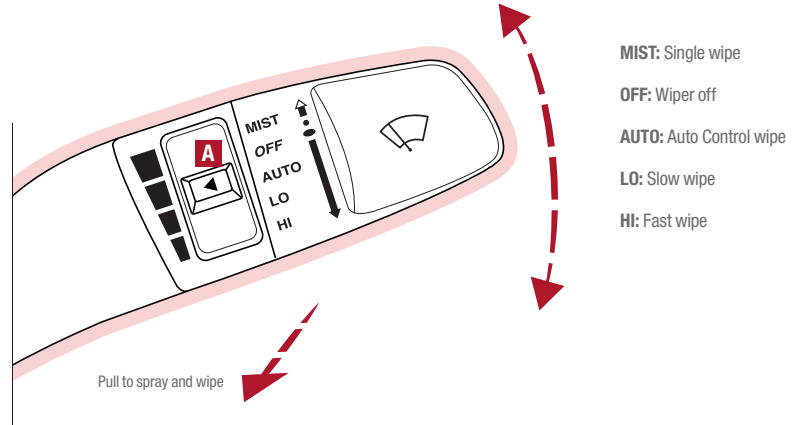
To operate:

- Move lever Up/Down to change Wiper modes
- Pull level to spray and wipe

Auto Rain Sensing

The rain sensor located on the upper end of the windshield glass senses the amount of rainfall and controls the wiping cycle for the proper interval. The more it rains, the faster the wiper operates. When the rain stops, the wiper stops.

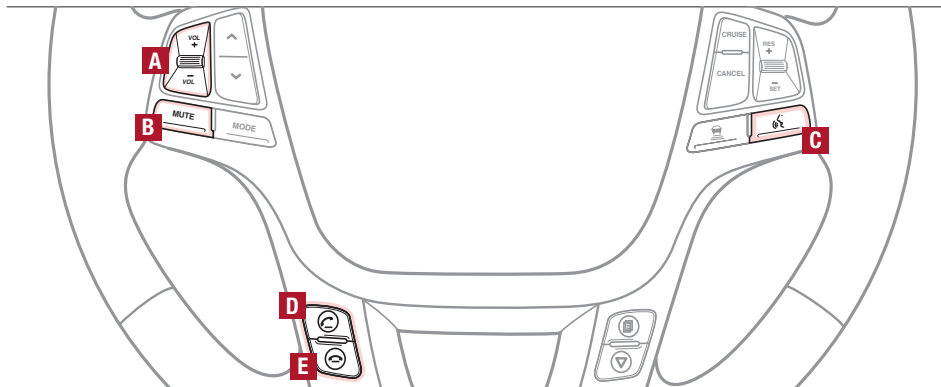
To adjust the Auto Rain Sensing speed setting, move the speed control switch **A** up/down.



Ⓢ QUICK TIPS

- With the ENGINE START/STOP button in the ON position and the wiper switch is in AUTO mode, the wiper will operate once to perform a self-check of the system
- Set the wiper to OFF position when the wiper is not in use

Bluetooth® Wireless Technology



A Volume button: Press up/down to raise/lower speaker volume

B MUTE button: Press to mute the microphone during a call

C Talk button: Press to activate voice recognition/bring up menus/place calls with minimal voice command prompts from the system

Ⓢ QUICK TIP

When using the voice command feature, wait for the system BEEP before speaking the command.

D Receive/Place Call button: Press to receive/place/transfer calls. Press to place a call using voice command prompts from the system, or to answer an incoming call

E End Call button: Press to end a call or cancel a function

Ⓢ QUICK TIPS

- Phonebook transfer upload time varies by phone model and with number of phonebook entries
- Because of differences in phone quality, service providers and **Bluetooth®** Wireless Technology chip programming, functionality may differ from one phone to another
- Changing language setting may delete paired phones

REMINDERS:

- Your vehicle's steering wheel buttons may differ from those in the illustrations. See your Owner's Manual for more details
- Driving while distracted is dangerous and should be avoided. Drivers should remain attentive to driving and always exercise caution when using the steering-wheel-mounted controls while driving

For more information, if equipped, refer to the Car Multimedia System User's Manual. For Bluetooth® Wireless Technology FAQs, go to www.kia.com, Owners section, or call Consumer Information for Bluetooth® Technology at (800) 333-4KIA. Refer to your Owner's Manual for more specific Bluetooth® Wireless Technology phone pairing and operation instructions.

Bluetooth® Wireless Technology

Pairing a Phone

For instructions on how to pair a phone, refer to the Car Multimedia System User's Manual or your vehicle's Quick Start Guide.

ⓘ QUICK TIP

During the pairing process, be sure to accept the connection requests on the phone for phonebook download and to allow acceptance of all future **Bluetooth®** connection requests.

How to Place a Call

When using the voice command feature, wait for the system BEEP before speaking the command.

There are two options for placing a call in the Navigation System:

- **Option 1:** Press the Receive/Place Call button **D** (displays the phone screen with number keypad)
- **Option 2:** Press the Talk button **C**. Then say the command "Call Name" or "Dial Number," followed by phone book name or number

Voice Recognition and Phone Contact Tips

The Kia Voice Recognition System may have difficulty understanding some accents or uncommon names. When using Voice Recognition to place a call, speak in a moderate tone, with clear pronunciation.

Help your **Bluetooth®** Wireless Technology Voice Recognition performance by making a few simple changes to your phone contacts:

- Use full names vs. short or single-syllable names ("John Smith" vs. "Dad", "Smith Residence" vs. "Home")
- Avoid using special characters or hyphens (@, &, #, /, -, *, +, etc.)
- Avoid using acronyms ("In Case Emergency" vs. "ICE")
- Spell words completely, no abbreviations ("Doctor Goodman" vs. "Dr. Goodman")

ⓘ QUICK TIPS

Contacts Sync Tips

- If Contact Sync is set to ON, contacts stored in your phone will download each time your phone is connected. There may be a delay before the system is available to place a call
- If Contact Sync is set to OFF, your phone contacts will download only at the initial pairing. This allows you to make calls without waiting for your phone contact list to download

📱 QR CODE

Voice Recognition Tips Video

To view a video on your mobile device, snap this QR Code or visit the listed website.

Refer to page 2 for more information.



www.KuTechVideos.com/vg13/2015

Advanced Smart Cruise Control (ASCC)*

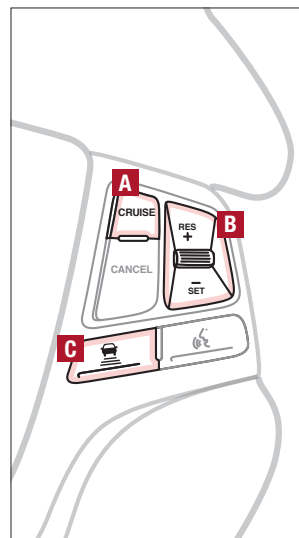
The Advanced Smart Cruise Control (ASCC)* system allows you to set the vehicle to maintain a speed so long as it is not limited by traffic. When traffic is encountered, the vehicle will be slowed to maintain a set distance behind traffic without depressing the accelerator or brake pedal.

To set/adjust the ASCC speed:

- Push the CRUISE button **A** to turn system ON. The CRUISE indicator will illuminate on the instrument cluster
- Accelerate/decelerate to the desired speed
- Move the ASCC lever **B** to set or adjust speed

To set the vehicle-to-vehicle distance, press the ASCC button **C** on the steering wheel. The images on the LCD screen **D** and the Instrument Cluster **E** will change when scrolling through the settings.

To turn system OFF, press the CRUISE button **A**. The CRUISE indicator on the instrument cluster will turn OFF and the LCD screen ASCC image will show cancelled **F**.



(Buttons located on right side of Steering Wheel)

QR CODE

Advanced Smart Cruise Control Video

To view a video on your mobile device, snap this QR Code or visit the listed website.

Refer to page 2 for more information.



www.KuTechVideos.com/vg13/2015

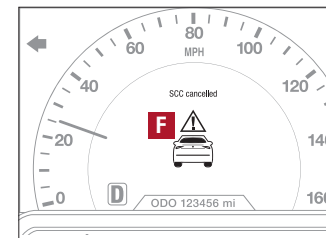
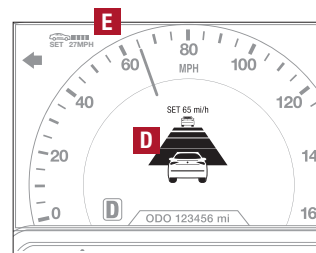
QUICK TIPS

To change the Cruise Control mode from ASCC to standard Cruise Control, press and hold button **C**. Repeat to switch modes again (The ASCC system must not be activated to change modes).

For the ASCC System to operate:

- When no vehicle is in front, you must be travelling at a minimum speed of 19 mph
- When following a vehicle, there is no minimum speed requirement

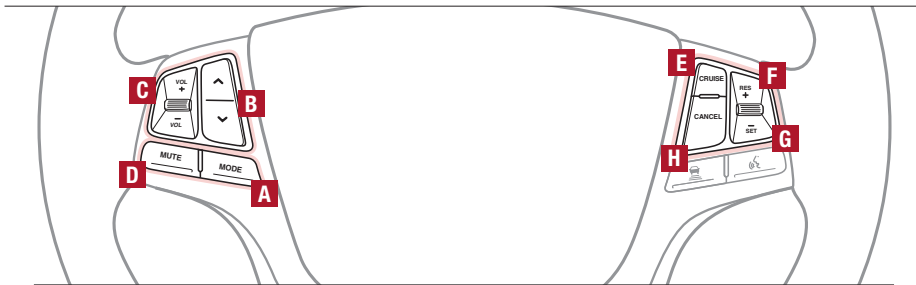
When following a vehicle, the system will automatically adjust your cruise speed based on the vehicle in front. It will even bring the vehicle to a complete stop if necessary. If the vehicle remains at a standstill for more than 3 seconds, the system will disable.



REMINDERS:

- Cruise Control button must be ON in order to turn ASCC ON/OFF
- ASCC is automatically activated by default when ignition is cycled

Audio Controls*



Cruise Control*

A Audio Mode button: Press to cycle through FM 1-2/AM/Sirius® 1-3/USB/iPod®/Aux/Bluetooth® Audio Streaming/My Music modes

B Seek/Preset button:
FM/AM/Sirius® Modes: Press to advance through Preset Stations. Press and hold to auto seek

Media Modes: Press to move Track Up/Down. Press and hold to Fast Forward / Rewind

C Volume button: Press up/down to raise/lower volume

D MUTE button: Press to mute all audio

ⓘ QUICK TIP

Pressing the Audio Mode button for more than 1 second will turn Audio Mode ON/OFF.

Driving while distracted is dangerous and should be avoided. Drivers should remain attentive to driving and always exercise caution when using the steering-wheel-mounted controls while driving.

E CRUISE Control ON/OFF button: Press to turn the Cruise Control ON/OFF

F Resume Cruising Speed button: Press to resume or increase cruising speed

G Set Cruising Speed button: Press to set or decrease Cruising Speed

H Cruise Control CANCEL button: To cancel Cruise Control setting, do one of the following:

- Press the brake pedal
- Press the CANCEL button **H**

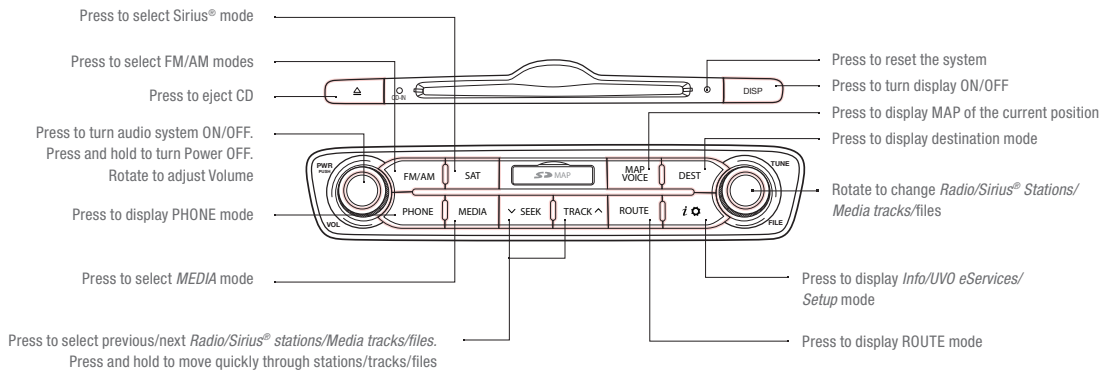
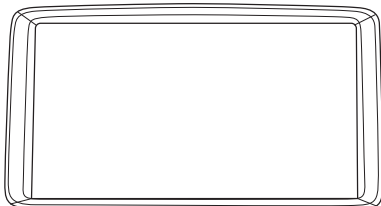
ⓘ QUICK TIPS

- Cruise Control is designed to function above 25 mph
- The Cruise Control system will not activate until the brake pedal has been depressed at least once after ignition ON or engine start

REMINDER: Your vehicle's steering wheel buttons may differ from those in the illustrations. See your Owner's Manual for more details.

Navigation System

– FM/AM/Sirius®/Media (CD, MP3, USB, iPod®, Aux, Bluetooth® Audio Streaming, My Music)



QR CODE

Navigation Audio System Videos

To view a video on your mobile device, snap this QR Code or visit the listed website.

Refer to page 2 for more information.



www.KuTechVideos.com/audio/nav_eServices

Ⓢ QUICK TIPS

- Prolonged use of the Navigation System in ACC mode may drain the vehicle's battery. A warning screen may appear periodically to remind users that the Navigation System should be operated with the engine running to prevent battery discharge
- When using the voice command feature, wait for the system BEEP before speaking the command

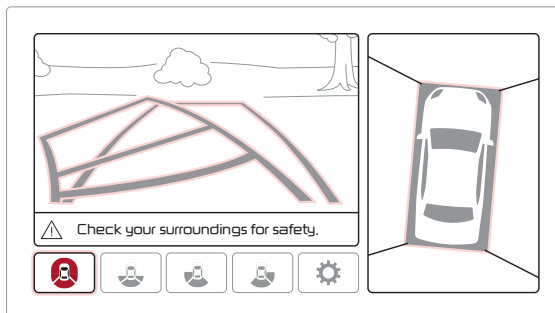
For further navigation system operation, refer to the Car Multimedia System User's Manual

REMINDER: Your vehicle's audio system may differ from that in the illustration.

Surround View Monitor (SVM)*

The Surround View Monitor (SVM) is a parking support system that shows the areas around the front, rear, left, and right sides of the vehicle via four cameras displayed onto the Navigation screen.

- The Front SVM camera is ON when the ENGINE START/STOP button is On, the gear shift is in Drive or Neutral and the SVM button is pressed ON
- Rear SVM: The camera view will automatically display on the Navigation screen when the vehicle is shifted into Reverse. The camera view will turn off when the vehicle is shifted out of Reverse
- Front SVM: The camera view will display on the Navigation screen in both Drive and Neutral. In Drive, the camera view will continue to display until the vehicle is above approximately 13 mph. The camera view will reappear on the Navigation screen whenever the vehicle drops below approximately 13 mph







ⓘ QUICK TIP





The Front SVM camera will turn off when the gear shift is moved into Park or Reverse or the SVM button is pressed.

Camera View Modes – To change camera view modes, press the icons shown below on the Navigation screen to select the mode.

Front SVM - when in Drive & Neutral:

-  Displays the front side and SVM images simultaneously on the screen
-  Displays the front side image on the screen
-  Displays the front side and left side images simultaneously on the screen
-  Displays the front side and right side images simultaneously on the screen

Rear SVM - when in Reverse:

-  Displays the rear view and SVM images simultaneously on the screen
-  Displays the rear side image on the screen
-  Displays the rear and left side images simultaneously on the screen
-  Displays the rear and right side images simultaneously on the screen

📱 QR CODE

Surround View Monitor Video

To view a video on your mobile device, snap this QR Code or visit the listed website.

Refer to page 2 for more information.



www.KuTechVideos.com/vg13/2015

REMINDER: The SVM camera is equipped with an optical lens to provide a wider range of vision and may appear different from the actual distance.

The Surround View Monitor system is only a supplemental device. Drivers should not rely solely on the SVM information when parking and backing up. Drivers should always pay attention and directly check the left/right and rear.

Clock



Center Panel Clock Setup:

Clock setup is done through the Navigation system. See below or refer to the Car Multimedia System User's Manual for more information.

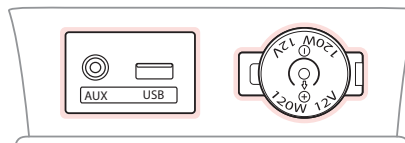
Navigation System Clock Setup:

Press the Info/Settings key **i** on the audio control unit. Then press the on-screen Setup button and select the Clock icon. Use the on-screen buttons to navigate through setup.

ⓘ QUICK TIP

Press the DONE button on the navigation screen to ensure changes are saved.

Aux/USB/iPod® Port & Power Outlets



If equipped, additional power outlets are located inside the center console.

ⓘ QUICK TIP

The power outlets are inactive when the ENGINE START/STOP button is OFF

REMINDER: Using the power outlet (accessory plug) for prolonged periods of time with the ENGINE START/STOP button in the ACC position (Engine OFF) could cause the battery to discharge.

For more information on the Aux/USB/iPod® Port & Power Outlets, refer to the Owner's Manual.

📱 QR CODE

USB Port Video

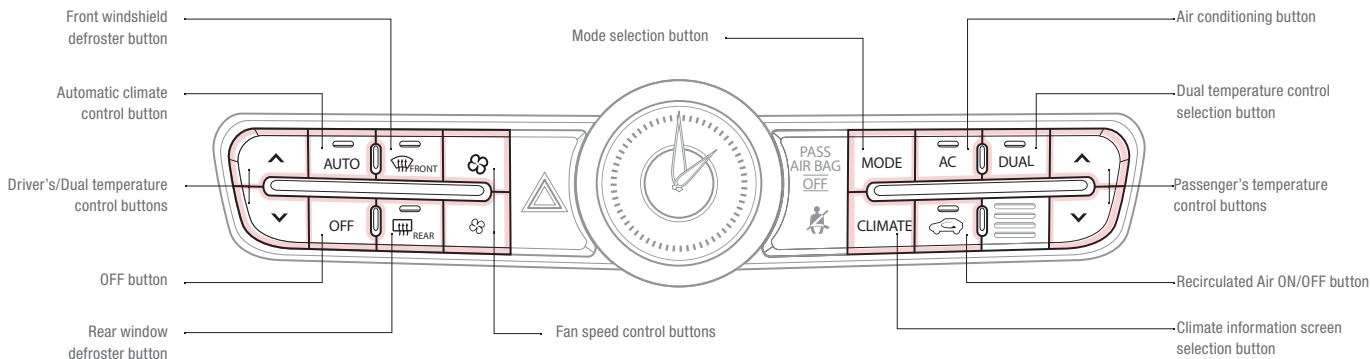
To view a video on your mobile device, snap this QR Code or visit the listed website.

Refer to page 2 for more information.



www.KuTechVideos.com/vg13/2015

Automatic Climate Control



Climate Control Auto Function

1. Press **AUTO** to select Full Auto Operation
2. Press **MODE** button to control which vents air flows through
3. Press **DUAL** to select Dual Temperature Control Operation

Defrost Outside Windshield:

1. Set **Fan Speed** to the highest position
2. Set **Temperature** to **Hot**
3. Press the **Front Defrost** button

Defog Inside Windshield:

1. Set **Fan Speed** to desired position
2. Set desired **Temperature**
3. Press the **Front Defrost** button

Air Flow Modes

To select Air Flow Modes, press the **MODE** button to cycle through to desired mode:



Face-Level



Floor-Level



Bi-Level



Floor/Defrost-Level

QUICK TIPS

- Defrost Mode activates A/C and opens Fresh Air Vent to help dehumidify the air and improve Defroster performance
- During Auto Operation, the A/C indicator will NOT illuminate. The fan speed, air intake, air flow and air conditioning may automatically be engaged at any time to reach desired temperature and reduce humidity
- Keep inside glass as clean as possible to reduce window fogging

REMINDERS:

- When in **AUTO** mode, Air Flow Mode and Fan Speed do not display on the Climate Control Display
- Warm air may flow in through vents if Recirculated Air button is not pressed ON (LED lit)
- Your Automatic Climate Control system may differ from those in the illustrations. See your Owner's Manual for more details

Automatic Gear Shift with Sportmatic® Shifting

P: Park

R: Reverse

N: Neutral

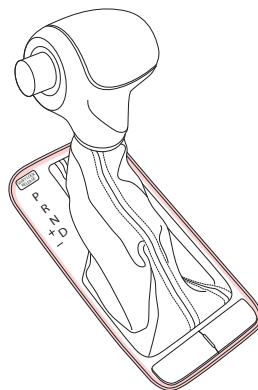
D: Drive

[+]: Sport Mode Upshift

[-]: Sport Mode Downshift

Sport Mode: To enter Sport mode, move shift lever from D to left gate.

To shift while in Sport mode, move shift lever up [+] to upshift or down [-] to downshift.



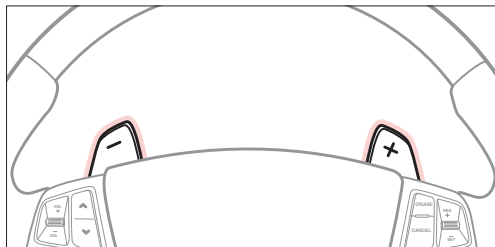
Paddle Shifters*

Paddle Shifters are operable when the shift lever is in the D position or in Sport mode.

Paddle Shifting: Pull the [+] or [-] paddle shifter once to shift up or down one gear.

REMINDERS:

- The Paddle Shifters can be operated when the vehicle speed is more than 6 mph
- When in Sport mode, pulling the left and right paddle shifters at the same time will NOT shift gears



Ⓢ QUICK TIPS

- Press brake pedal and depress release button to move gearshift from N to P, N to R or from P to any gear
- Sport mode downshifts are made automatically when the vehicle slows down. When the vehicle stops, 1st gear is automatically selected

📱 QR CODES

To view a video on your mobile device, snap these QR Codes or visit the listed website.

Refer to page 2 for more information.

Sportmatic® Shifting Video



www.KuTechVideos.com/vg13/2015

Paddle Shifters Video




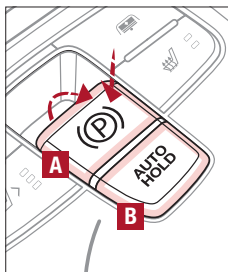
www.KuTechVideos.com/vg13/2015

Electric Parking Brake*

The Electric Parking Brake (EPB) system utilizes an electric motor to engage the parking brake.

Applying the Parking Brake


Depress the brake pedal and pull up the EPB switch **A**. Ensure that the indicator light  is illuminated on the instrument cluster.



(Buttons located below Gear Shift)

Releasing the Parking Brake

The EPB will automatically release when the shifter is placed in Reverse or Drive.

To release EPB manually, depress the brake pedal, then press the EPB switch **A**, with the ignition switch in the ON position. Ensure that the indicator light  is OFF.

REMINDERS:

- As a bulb check, the EPB malfunction indicator will illuminate for approximately 3 seconds when the ignition switch is turned ON
- If the warning light does not illuminate temporarily, or continues to remain lit, take your vehicle to an authorized Kia dealer and have the system checked
- The EPB should not be operated while the vehicle is moving, unless there is an emergency situation
- A click or electric brake motor sound may be heard while operating or releasing the EPB, but these conditions are normal and indicate that the EPB is functioning properly

📌 QUICK TIPS

- When leaving your keys with parking lot attendants or valet, make sure to inform them how to operate the EPB
- If parked on a steep incline, pull up the EPB switch for more than 3 seconds for a firmer EPB application
- Pull up and hold EPB switch again to increase brake pressure if parked on a decline or incline

Auto-Hold*

Auto-Hold temporarily maintains the vehicle at a standstill even if the brake pedal is released. Auto-Hold can be turned ON/OFF using the AUTO HOLD switch **B** on the driver's panel. Before Auto-Hold will operate, the driver's door, engine hood and trunk must be closed, and the driver's seat belt must be fastened.

The Auto-Hold indicator has four states:

White: Standby - With vehicle at a standstill, and AUTO HOLD switch **B** turned ON, the indicator will illuminate white. While driving the vehicle (vehicle is not at a standstill), the Auto-Hold indicator will remain white.

Green: Engaged - When coming to a complete stop by depressing the brake pedal, the Auto-Hold indicator changes from white to green.

OFF (not illuminated) - The indicator will turn OFF when the AUTO HOLD switch **B** is manually turned OFF or when the EPB is manually turned ON.

Yellow: Malfunction - When the indicator is illuminated yellow, there may be a system malfunction. Take your vehicle to a local Kia dealer.

📱 QR CODE

Electric Parking Break/ AUTO HOLD Video

To view a video on your mobile device, snap this QR Code or visit the listed website.

Refer to page 2 for more information.



www.KuTechVideos.com/vg13/2015

Refer to page 4 for location of Instrument Cluster indicators.

Heated Steering Wheel*

Press Heated Steering Wheel button **A** to turn ON/OFF Steering Wheel Heater, while the ENGINE START/STOP button is in the ON position. Steering Wheel Heater will turn off automatically in 30 minutes, or when button is pressed again to deactivate.

Ⓢ QUICK TIPS

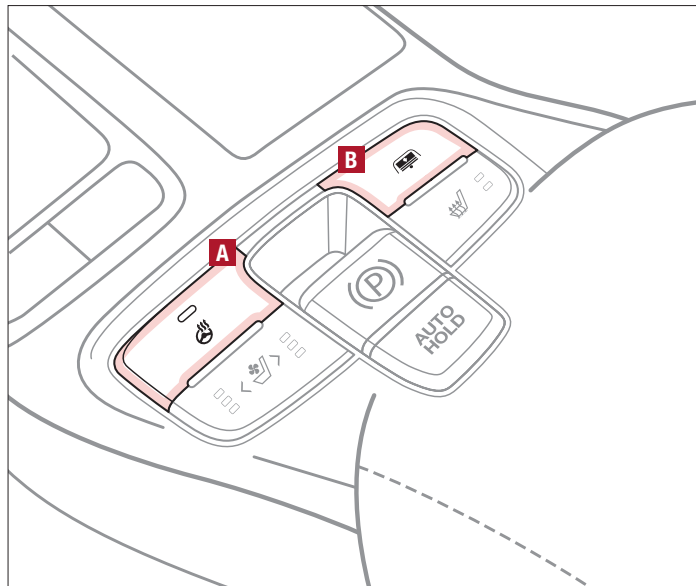
- If ignition is turned OFF, then ON again within 30 minutes of Steering Wheel Heater being turned ON, the system will remain in the ON position
- System does NOT turn off when ignition is cycled. To turn off system, press the Heated Steering Wheel button

Power Rear Sunshade*

Press the Power Rear Sunshade button **B** to raise/lower sunshade, while the ENGINE START/STOP button is in the ACC/ON position.

Ⓢ QUICK TIPS

1. The Power Rear Sunshade will lower when the Gear Shift is moved into the R (Reverse) position
2. Then when the Gear Shift is moved into D (Drive) and vehicle's traveling more than 12 mph, the Power Rear Sunshade will unfold automatically



(Buttons located below Gear Shift)

Seat Warmers / Ventilated Seats*

Seat Warmers only*

- Press button once for high setting (2 LEDs lit)
- Press button twice for low setting (1 LED lit)
- Press button a third time to turn OFF



(Buttons located below Gear Shift)

🕒 QUICK TIP

With the seat warmer switch in the ON position, the heating system in the seat turns OFF or ON automatically depending on the seat temperature.

Seat Warmers / Ventilated Seats*

Seat Warmers

- Press right side of button once for high setting (3 LEDs lit)
- Press button twice for medium setting (2 LEDs lit)
- Press a third time for low setting (1 LED lit) and again to turn OFF

Ventilated Seats

- Press left side of button once for high setting (3 LEDs lit)
- Press twice for medium setting (2 LEDs lit)
- Press a third time for low setting (1 LED lit) and again to turn OFF



(Buttons located below Gear Shift)

📱 QR CODE

Seat Warmers and Ventilated Seats Video

To view a video on your mobile device, snap this QR Code or visit the listed website.

Refer to page 2 for more information.



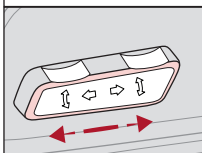
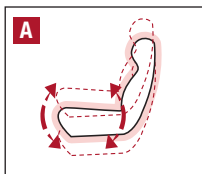
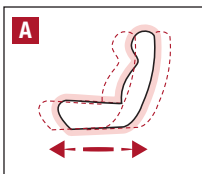
www.KuTechVideos.com/vg13/2015

Warming (Yellow LED)

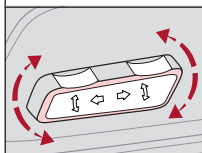
Ventilating (Blue LED)

Power Adjustable Driver's Seat*

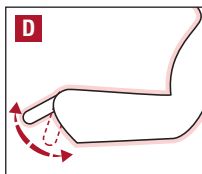
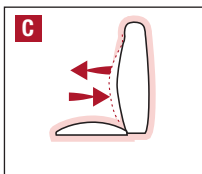
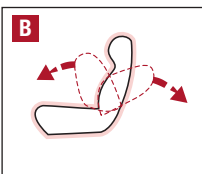
Move/Press controls to adjust Seat forward/backward, Seat Cushion, Seatback, Lumbar or Cushion Extension



Seat forward/backward



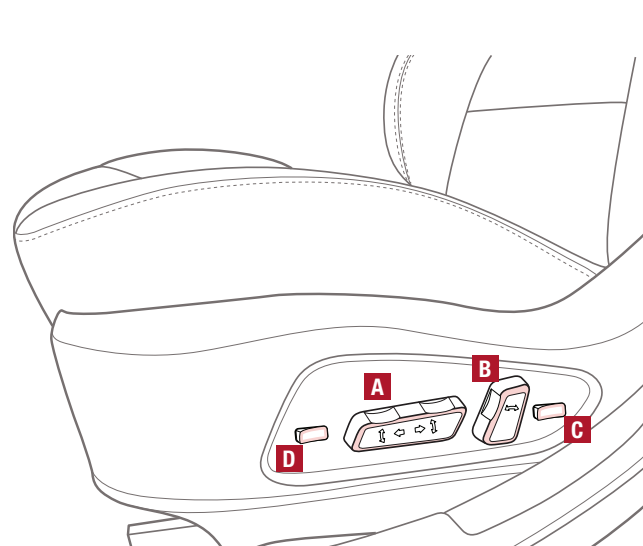
Seat Cushion



Seatback

Lumbar

Cushion Extension



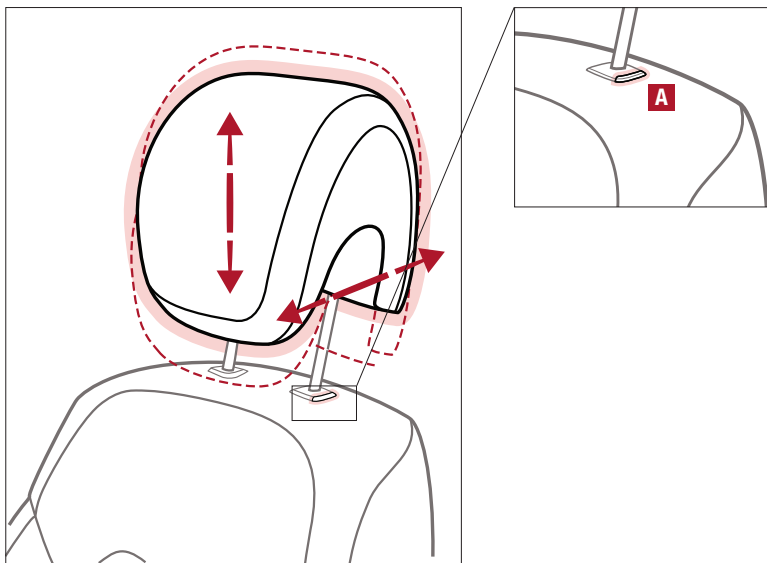
Front Seat Headrest Adjustment

To adjust headrest forward: Pull headrest forward at an angle.

To adjust headrest back: Pull forward at a slight angle to the farthest position and release. Then pull forward to desired position.

To raise headrest: Pull headrest up.

To lower headrest: Press lock **A**, then press the headrest down.

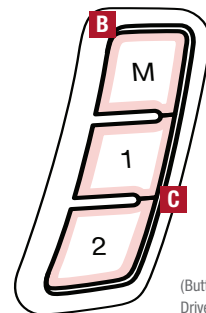


Driver Position Memory System*

The integrated system stores into memory the position of the Driver's Seat, Outside Rearview Mirrors and the Steering Wheel.

To store positions into memory, first place the Gear Shift into P (Park) while the ENGINE START/STOP button is in the ON position. Then:

1. Adjust the Driver's Seat, Outside Mirrors and the Steering Wheel
2. Press the Memory button **B** on the control panel. System will beep once
3. Press one of the memory buttons **C** within 5 seconds. The system will beep twice when memory has been stored



(Buttons located on Driver's Door Panel)

Smart Key

- A** Press to lock All Doors
- B** Press to unlock Driver's Door. Press twice in 4 seconds to unlock All Doors
- C** Press and hold for more than 1 second to unlock Trunk and manually open

REMINDERS:

- Trunk lid will partially open. To fully open, lift up manually
- The Trunk unlocks when the Smart Key is within close proximity of the vehicle

- D** Press and hold more than 1 second for Panic Alarm. To turn off Alarm, press any button
- E** Press to release Mechanical Key (Button on reverse side of fob)

Ⓢ QUICK TIP

If the Smart Key battery is weak or not working properly, hold the Smart Key fob up to the ENGINE START/STOP button (Lock button side closest) and press to start engine.

REMINDERS:

- Remote button configuration may vary depending on vehicle options
- The Smart Key's signal can be blocked by the normal operation of a cell phone or smartphone. To help prevent this, store each device separately

Driver's Door Lock/Unlock button **G**:

To unlock door(s):

- Press button once to unlock Driver's door
- Press again within 4 seconds to unlock all doors



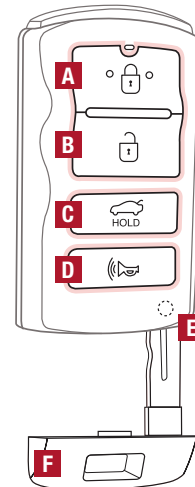
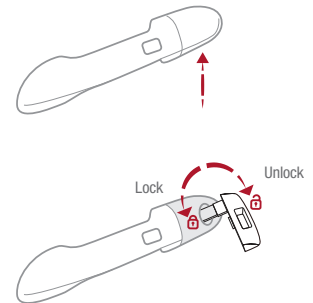
To lock all doors - Press again to lock all doors

Mechanical Key **F**:

Use to unlock/lock Driver's Door

1. Remove door handle keyhole cover with Mechanical Key by pressing up into slot as shown
2. Insert Mechanical Key and turn right to Unlock Driver's Door. Turn twice within 4 seconds to Unlock all doors
3. Insert Mechanical Key and turn left to Lock Driver's Door
4. Return keyhole cover to its original position

Use to lock glove box and to turn Child Safety Locks



QR CODE

Engine Start/Stop Button & Smart Key Video








To view a video on your mobile device, snap this QR Code or visit the listed website.

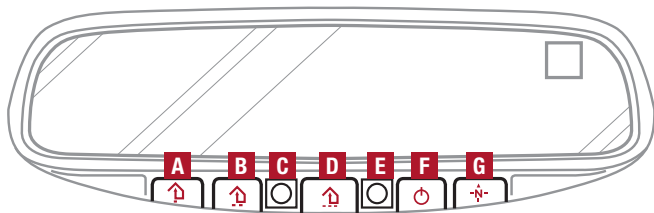
Refer to page 2 for more information.



www.KuTechVideos.com/vg13/2015

HomeLink® with Auto-Dimming Rearview Mirror

- A** HomeLink® button 
- B** HomeLink® button 
- C** Indicator light 
- D** HomeLink® button 
- E** Glare detection sensor 
- F** Automatic dimming ON/OFF 
- G** Compass control button 



The HomeLink® / Auto-Dimming Rearview Mirror is designed to reduce glare from a vehicle's headlights located in the rear and also connect up to three electronic transmitters into one location.

REMINDER: Mirror indicator light **C** will illuminate when automatic dimming is ON.

Ⓢ QUICK TIPS

- You can reprogram a single HomeLink® button by repeating Step 2
- Erasing programmed buttons will delete all trained transmitters

How to Sync Transmitter with HomeLink®

If programming for the first time, begin with Step 1 (repeating this step will delete all information).

To program non-rolling and rolling code garage door openers and other devices:

1. Press and hold the left **A** and center **D** buttons simultaneously until the indicator light **C** begins to flash (to reprogram buttons, skip this step)
2. Press and hold the desired button **A**, **B** or **D** and hold the button on the transmitter while it is approximately 1 to 3 inches away from the mirror. The HomeLink® Indicator light **C** will flash rapidly once the frequency signal has been successfully programmed

To finish programming rolling code garage door openers, complete these steps:

3. Locate the "learn" or "smart" button on the garage door's motor head unit. Press and release the button and complete Step 4 within 30 seconds
4. Firmly press and release the programmed HomeLink® button up to three times

Operating HomeLink®:

Press one of the programmed HomeLink® buttons.

Erasing programmed buttons:

Press and hold the left **A** and center **D** buttons simultaneously for approximately 20 seconds, and then release both buttons within 30 seconds.

If your garage door opener was manufactured in 2011 or later, and you're unable to program your vehicle's HomeLink® system, you may need to purchase a HomeLink Repeater Kit. For more information, go to www.HomeLink.com or call (800) 355-3515.

Map/Room Lamps

Automatic turn off function*

The interior lights automatically turn off approximately 30 seconds after the ENGINE START/STOP button is OFF.

Map/Room Lamp Operation

Press the lens **A** to turn the Map Lamp ON/OFF. This light produces a spot beam for convenient use as a map lamp or as a personal lamp for the driver or the front passenger.

The Map Lamp turns ON when any door is opened or the ignition is turned OFF. When all doors are locked or the ignition is ON, the Map Lamp will turn OFF immediately.

ON position **B** – When in ON position, the Map and Room Lamps remain ON until switched again to turn OFF.

DOOR position **C** – When in DOOR position and a door is opened, or doors are unlocked from the Smart Key, the Map and Room Lamps turn ON for approximately 30 seconds.

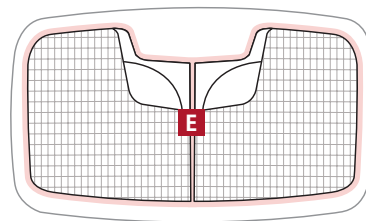
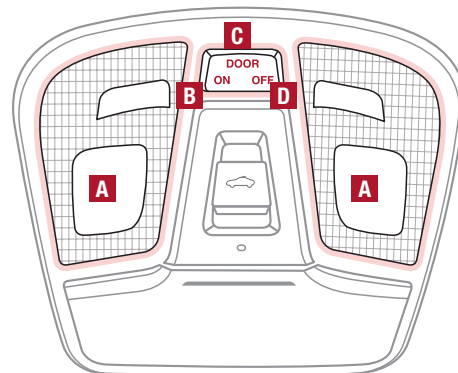
OFF position **D** - When in OFF position, all interior lights are OFF.

Room Lamp - Press the lens **E** to turn the Room Lamp ON/OFF.

REMINDER: When Room Lamp lens is pressed ON it will remain ON, even when the Map Lamp switch is in the OFF position.

Ⓢ QUICK TIPS

- When doors are unlocked by the Smart Key*, the lamp turns ON for approximately 30 seconds
- If your vehicle is equipped with the theft alarm system, the interior lights automatically turn off approximately 3 seconds after the system is in armed stage
- Using interior lights for an extended period of time may cause battery discharge



Panoramic Sunroof Operation*

The Sunroof and Sunshade operation is controlled through a multidirectional switch/lever **A**. The ignition needs to be in the ON position to operate the sunroof/sunshade.

Slide the Sunshade and Sunroof:

- Auto Open: Slide lever backward to the farthest position and release
- Auto Close: Slide the lever forward to the farthest position and release

Slide the Sunshade:

- Auto Open: Slide the lever partially backward to the first detent position
- Auto Close: Slide the lever forward to the farthest position

Slide the Sunroof (with Sunshade open):

- Open: Slide the lever backward and release
- Auto Close: Slide the lever forward to the first detent position or pull the lever downward

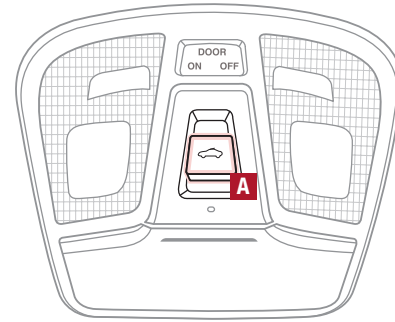
Tilt the Sunroof:

- Raise: Push lever upward
- Lower: Pull lever downward
- Auto Close Sunroof and Sunshade: Slide the lever forward to the farthest position

REMANDER: Sunshade needs to remain OPEN while Sunroof is open and vehicle is moving.

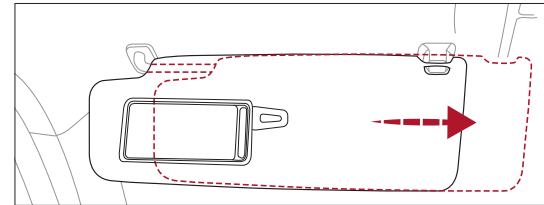
🕒 QUICK TIP

To stop the Sunroof/Sunshade at any position, push or pull the Sunroof control lever in any direction.



Sunvisor

Use the Sunvisor to shield direct light through the front or side windows. Slide the Sunvisor out and adjust as needed.



REMANDERS:

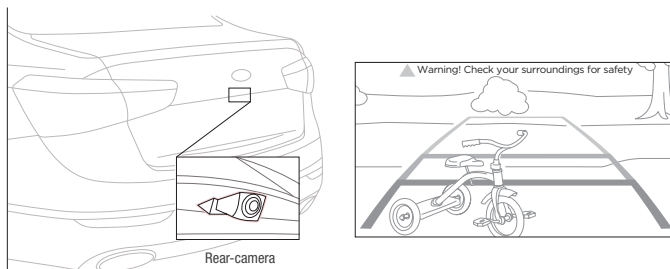
- Sunvisor may not shield all direct light
- The Sunvisor may impair visibility if not adjusted properly

Rear-Camera Display

The Rear-Camera Display system is not a safety device. It is a supplemental system that displays the view behind the vehicle through the Navigation screen while the vehicle is in Reverse.

The Rear-Camera Display activates when the:

- ENGINE START/STOP button is in the ON position (Green Light)
- Gear Shift Lever is in the R (Reverse) position



REMINDERS:

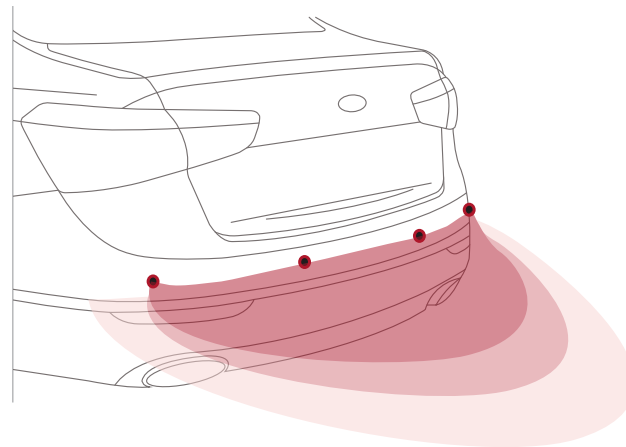
- The Rear-Camera Display is not a substitute for proper and safe backing-up procedures. The Rear-Camera Display may not display every object behind the vehicle. Always drive safely and use caution when backing up
- While camera is active, only the volume controls on the Audio System can be operated

Back-Up Warning System (Rear Parking Assist System)*

The Back-Up Warning System is not a safety device. The Back-Up Warning System is a supplemental system that assists the driver by chiming if any object is detected within the sensing area to the rear and side of the vehicle when backing up. When the ignition is ON, the system is activated.

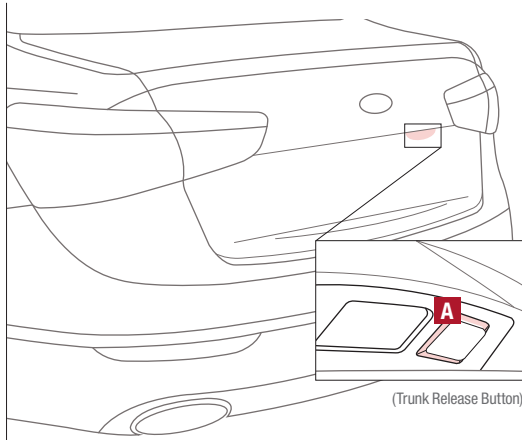
REMINDERS:

- If the vehicle is moving at speeds over 3 mph, the system may not activate correctly
- When more than two objects are sensed at the same time, the closest one will be recognized first
- The Back-Up Warning System is not a substitute for proper and safe backing-up procedures. Always drive safely and use caution when backing up. The Back-Up Warning System may not detect every object behind the vehicle



Trunk Release Button


Located underneath the Trunk lid. With Trunk unlocked, press the Trunk Release button **A** and pull the Trunk lid up by the handle to open.



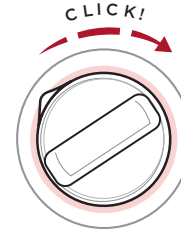
📌 QUICK TIPS

- The Trunk must be unlocked before it can be opened by the Trunk Release Button
- Smart Key* - The Trunk unlocks automatically, and can then be opened manually, when the Smart Key fob* is within close proximity to the vehicle


Fuel Cap/Malfunction Indicator (Check Engine Light)

Tighten for ONE CLICK to prevent Malfunction Indicator  from illuminating.

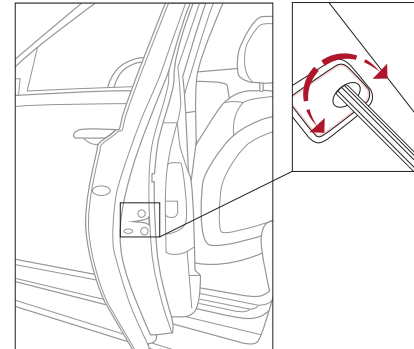
REMINDER: The Fuel Filler Door Release button is located on the driver's button panel, left of the Steering Wheel.



Child Safety Locks

Located on the rear edge of the rear passenger doors, turn the Child Safety Lock to the lock position  to disable the inner door handles from opening the rear doors.

REMINDER: Child Safety Lock is located on rear passenger's door jamb.



📱 QR CODE

One-Click Fuel Cap Video

To view a video on your mobile device, snap this QR Code or visit the listed website.

Refer to page 2 for more information.

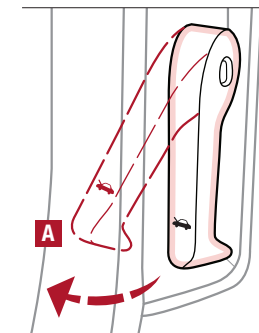


www.KuTechVideos.com/vg13/2015

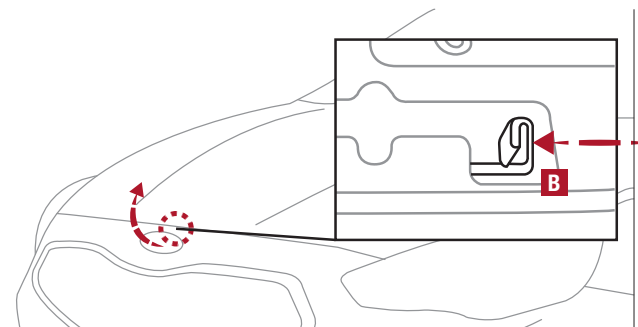
Hood Release Lever and Latch

Opening the Hood:

1. Pull the Hood Release Lever **A** to unlatch the Hood
2. In the front of the vehicle, lift the Hood slightly, push the secondary Latch **B** to the left inside of the Hood's center and lift the Hood



(Lever located near floor below Driver's Panel)



Closing the Hood:

Lower the Hood about halfway and then press down to securely lock in place.

Occupant Detection System (ODS) / Passenger Airbag Off Indicator

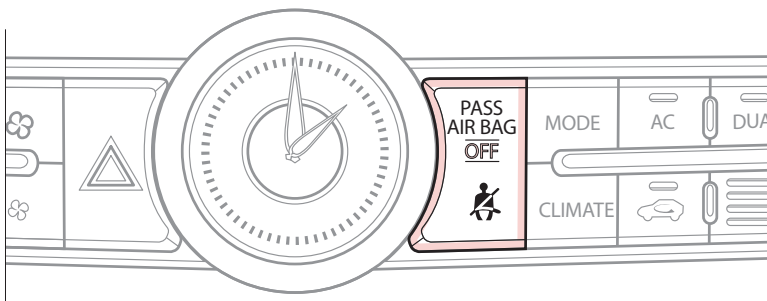
ODS detects the presence and position of the front passenger and adjusts or turns off airbag deployment accordingly.

Depending on the situation and type of accident, the system may:

- Deploy airbag (Adult)
- Not deploy the airbag (Unoccupied)

If the system determines that the airbag should not be deployed, the “PASS AIR BAG OFF” light will illuminate.

Please refer to your Owner's Manual and the separate brochure titled “Understanding Your Safety Belt & Supplemental Restraint System” for more detailed information regarding your vehicle's airbags.

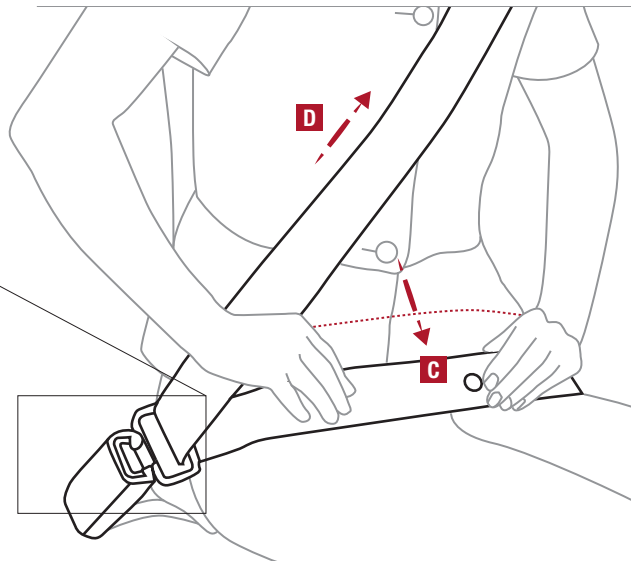
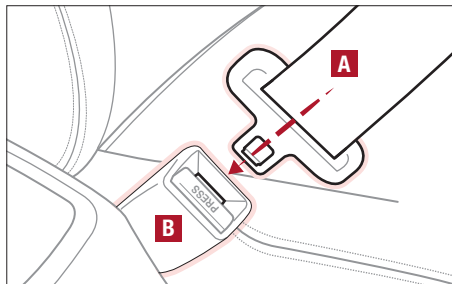


Seat Belts

To properly fasten your seat belts:

1. Insert the tongue belt plate **A** into the buckle **B** until it clicks
2. Position the lap portion of the belt across your lap as LOW ON THE HIPS as possible **C**. Adjust the belt to a SNUG FIT by pulling up on the shoulder portion **D**

REMINDER: For maximum protection, always wear your seat belt.



© QUICK TIP

The seat belt warning chime operates for driver's seat only.

Seat Belt Retractor Locks

Retractor locks allow lap/shoulder safety belts to remain unlocked during normal vehicle operation for freedom of movement and increased comfort.

During a STRONG STOP, SUDDEN TURN OR CERTAIN COLLISIONS, seatbelt retractors will automatically lock the belts to reduce the risk of injury.

For more detailed information regarding your vehicle's safety belts, please refer to your Owner's Manual and the separate brochure titled "Understanding Your Safety Belt & Supplemental Restraint System."

LEGAL DISCLAIMERS

Driving while distracted is dangerous and should be avoided. Drivers should remain attentive to driving and always exercise caution when using the steering-wheel-mounted controls while driving.

Driving while distracted can result in a loss of vehicle control that may lead to an accident, severe personal injury and death. The driver's primary responsibility is in the safe and legal operation of a vehicle, and use of any handheld devices, other equipment or vehicle systems which take the driver's eyes, attention and focus away from the safe operation of a vehicle or that are not permissible by law should never be used during operation of the vehicle.

Safety Features: No system, no matter how advanced, can compensate for all driver error and/or driving conditions. Always drive responsibly.

Advanced Smart Cruise Control, Blind Spot Detection, and Lane Departure Warning systems are not substitutes for proper and safe driving. These systems may not detect every object alongside or behind the vehicle. Always drive safely and use caution.

Back-Up Warning System (Rear Parking Assist System) / Rear-Camera Display: The Back-Up Warning System (Rear Parking Assist System) / Rear-Camera Display are not substitutes for proper and safe backing-up procedures. These systems may not detect every object alongside or behind the vehicle. Always drive safely and use caution when backing up.

Tilt/Telescoping Steering Wheel: Never attempt to adjust steering wheel position when vehicle is in motion.

Front Seat Headrest Adjustment: Never attempt to adjust headrests when vehicle is in motion.

Seat Belts / Airbags: For maximum protection, always wear your Seat Belt.

Navigation: GPS maps and directions are for information purposes only, and Kia does not make any warranties about the accuracy of that information. Kia is not responsible for loss or delay resulting from the use of the navigation system.

Caution: Do not enter information into the navigation system while the vehicle is moving. Failure to pay attention to travel conditions and vehicle operation while the vehicle is in motion could result in loss of vehicle control. Operate the system only when it is safe and legal to do so.

TPMS: Even with the Tire-Pressure Monitoring System (TPMS), always check your tire pressure on a regular basis.

Bluetooth® Wireless Technology: A compatible Bluetooth® wireless technology-enabled cell phone is required to use Bluetooth® wireless technology. The Bluetooth® word mark and logos are registered trademarks owned by Bluetooth SIG, Inc. and any use of such marks by Kia is under license. Other trademarks and trade names are those of their respective owners. A Bluetooth® enabled cell phone is required to use Bluetooth® wireless technology.

SiriusXM®: SiriusXM Satellite Radio, SiriusXM Traffic and SiriusXM Travel Link each require a subscription sold separately, or as a package, by SiriusXM Radio Inc. **If you decide to continue your service at the end of your trial subscription, the plan you choose will automatically renew and bill at then-current rates until you call 1-866-635-2349 to cancel. See SiriusXM Customer Agreement for complete terms at www.siriusxm.com.** Other fees and taxes will apply. All fees and programming are subject to change. Not all vehicles or devices are capable of receiving all services offered by SiriusXM. Data displays and individual product availability vary by vehicle hardware. Current information and features may not be available in all locations, or on all receivers. Weather Forecast, Current Conditions may not be available in all locations. Images above are for representative purposes only and are not real products. For actual features and images of real products, consult the vehicle manufacturer. SiriusXM is not responsible for any errors or inaccuracies in the data services or their use in the vehicle. Travel Link Stocks displays current price and daily delta of around 7,000 actively reported securities traded on the NYSE®, NASDAQ® and AMEX®. The service is delayed approximately 20 minutes. SiriusXM satellite service is available only to those at least 18 years of age in the 48 contiguous USA, DC, and Puerto Rico (with coverage limitations). SiriusXM Internet Radio service is available throughout our satellite service area and in AK and HI. © 2014 SiriusXM Radio Inc. Sirius, XM and all related marks and logos are trademarks of SiriusXM Radio Inc.

UVO eServices app: Apple iPhone® and select Android™ devices only are UVO eServices compatible. iPhone® is a registered trademark of Apple Inc. Android™ is a registered trademark of Google Inc. No subscription fee for UVO eServices. No charge for the UVO eServices app. App uses your smartphone cellular data service. Normal data rates will apply.

Sportmatic® is a registered trademark of Kia Motors America.

iPod® is a registered trademark of Apple Inc. iPod® mobile digital device sold separately.

HomeLink® is a registered trademark of Gentex Corporation.

Pandora is a registered trademark of Pandora Media, Inc.



NORMAL MAINTENANCE SCHEDULE

When your vehicle requires service, remember that your dealer knows your vehicle best. Your dealer has factory-trained technicians, recommended special tools, genuine Kia replacement parts, and is dedicated to your complete satisfaction. For expert advice and quality service, see your authorized Kia dealer.

INTERVAL MAINTENANCE CHART									
7,500 miles	A	B							
15,000 miles	A	B	C						
22,500 miles	A	B							
30,000 miles	A		C	D					
37,500 miles	A	B							
45,000 miles	A	B	C						
52,500 miles	A	B							
60,000 miles	A		C	D	E	F			
67,500 miles	A	B							
75,000 miles	A	B	C		E				
82,500 miles	A	B							
90,000 miles	A		C	D	E				
97,500 miles	A	B							
105,000 miles	A	B	C		E				H
112,500 miles	A	B							
120,000 miles	A		C	D	E	F	G		

A Inspect* — Battery condition, vacuum hose

Replace — Engine oil and oil filter

Perform — Rotate tires; add fuel additive¹

B Inspect* — Air cleaner filter

C Inspect* — Air conditioner refrigerant and performance**, brake lines, hoses and connections; drive shaft and boots, exhaust pipe and muffler, front/rear disc brakes and pads**, front brake calipers, steering gear box, linkage and boots/lower arm ball joint, upper arm ball joint and suspension mounting bolts

Replace — Climate control air filter (for evaporator and blower unit)

D Inspect* — Brake fluid, parking brake**, fuel filter², fuel tank air filter, fuel tank, lines, vapor hose and fuel filler cap

Replace — Air cleaner filter

E Inspect* — Drive belts³

F Inspect — Valve clearance⁴

G Replace — Engine coolant⁵

H Replace — Spark plugs (iridium coated)

* and, if necessary, adjust, clean, replace or correct.

** If equipped.

¹ If TOP TIER Detergent Gasoline is not available, one bottle of additive is recommended. Additives are available from your authorized Kia dealer along with information on how to use them. Do not mix other additives.

² Fuel filter & fuel tank air filter are considered to be maintenance free, but periodic inspection is recommended for this maintenance schedule depends on fuel quality. If there are some important safety matters like fuel flow restriction, surging, loss of power, hard starting problem, etc, replace the fuel filter immediately regardless of maintenance schedule and consult an authorized Kia dealer for details.

³ The drive belt should be replaced when cracks occur or tension is reduced excessively.

Inspect "Water Pump" when replacing the drive belt or timing belt.

⁴ Inspect for excessive tappet noise and/or engine vibration and adjust if necessary.

⁵ When replacing coolant, use only a qualified coolant additive for your vehicle and never mix hard water in the coolant filled at the factory. An improper coolant mixture can result in serious malfunction or engine damage.

Check tire pressure at least once a month or more.

See your owner's manual for more details and complete maintenance information, including severe maintenance schedule. Warranty may be voided if maintenance schedule is not followed.

Call 1-800-333-4kia (4542) for roadside assistance.

© 2014 Kia Motors America, Inc. All rights reserved.

Part Number: UC150-PS-004



CADENZA CUSTOMER DELIVERY CHECKLIST

Owner's Name: _____ VIN: _____ Mileage: _____

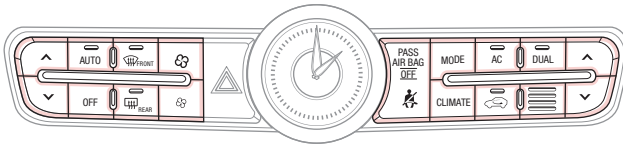
Dealership Name: _____ Sales Consultant: _____ Date: _____

BEFORE DELIVERY

- Test and confirm "Good Battery" using the Kia GR8-1299 battery tester and affix Results Label
- Verify all tire pressures are to spec (see driver's door label) LF_____ LR_____ RF_____ RR_____
- Verify proper operation of Remote Keyless Entry and Smart Key lock/unlock
- Ensure floor mats are snapped into place (if applicable)
- Verify vehicle is clean (interior and exterior), in good condition and free of chips and scratches
- Ensure all key documents are in the vehicle (Owner's Manual, Warranty and Consumer Information booklet, Tire Warranty booklet and Features & Functions Guide and any Audio System User's Manual.)

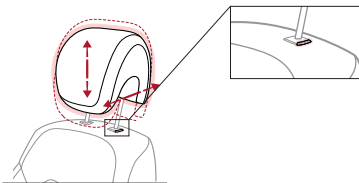
KEY FEATURE WALKTHROUGH

- Air Conditioning / Automatic Climate Control - page 25 – Demonstrate Air Flow Modes, Defog and Defrosting Windshield Fan Speed



Automatic*

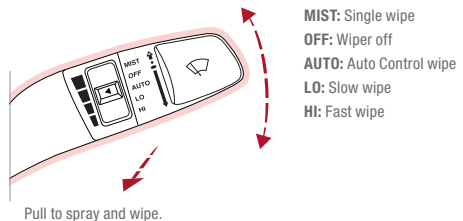
- Front Seat Headrest Adjustment – page 31



- Windshield Wipers & Washers – page 17

Move lever Up/Down to change Wiper modes.

Press button Up (Faster) / Down (Slower) to adjust wipe speed.



- MIST:** Single wipe
- OFF:** Wiper off
- AUTO:** Auto Control wipe
- LO:** Slow wipe
- HI:** Fast wipe

Pull to spray and wipe.



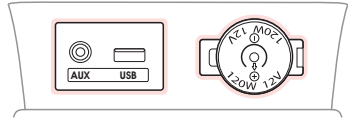
KEY FEATURE WALKTHROUGH

- Navigation System* – page 22
For further navigation system operation, refer to the Car Multimedia System User's Manual

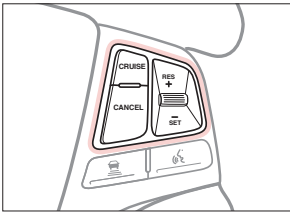


Demonstrate the following with the customer

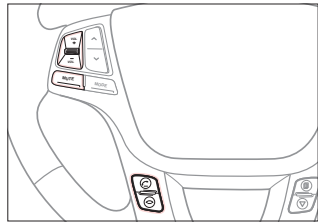
- Aux/USB/iPod® Port and Power Outlets – page 24



- ASCC / Cruise Control – pages 20-21
Demonstrate operation



- Bluetooth® Wireless Technology – pages 18-19
Demonstrate operation



- Tire Pressure Monitoring System (TPMS) – page 5
- Blind Spot Detection (BSD)* – page 9
- Lane Departure Warning System (LDWS)* – page 10
- Engine Start/Stop Button – page 13
- Clock Setup – page 24
- Electric Parking Brake (EPB) / Auto-Hold* – page 27
- Seat Warmers / Ventilated Seats* – page 29

- Smart Key – page 32
- HomeLink® with Auto-Dimming Rearview Mirror – page 33
- Panoramic Sunroof Operation* – page 35
- Sunvisor – page 35
- Rear-Camera Display* – page 36
- Passenger Airbag Off Indicator – page 39

*if equipped

DURING DELIVERY

- Explain first service process and schedule first service appointment
- Tour Parts & Service departments, introduce staff and explain value of Kia Parts and Service
- Review recommended maintenance schedule and maintenance requirements to validate warranty
- Review business hours and Customer 360° Care
- Review the Kia 10-year/100,000-mile warranty program
- Ensure 100% satisfaction with sales and delivery process and no problems with the vehicle
- Confirm time and best contact number for initial dealer follow-up

Sales Consultant: _____ Date: _____
 Sales Manager: _____ Date: _____
 Customer: _____ Date: _____