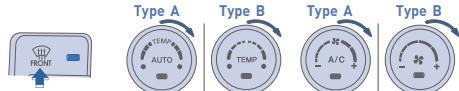


## WALK THE CUSTOMER THROUGH EACH OF THE FOLLOWING KEY DELIVERY FEATURES

### □ How to defrost – page 15




1. Press the front windshield defrost control.
2. Set the temperature control to the warmest setting.
3. Set the fan speed to the highest setting.

### □ BLUETOOTH – pages 18-21

- Show phone compatibility website: [www.hyundaiusa.com/bluetooth](http://www.hyundaiusa.com/bluetooth)
- Make a test call using customer's paired phone
- Demonstrate Voice Recognition (VR)
- For Navigation radio: emergency brake must be applied to pair phone

### □ BLUE LINK – pages 22-23

- Assist with creating MyHyundai.com account
- Assist with Blue Link enrollment
- Show Blue Link Users Manual & tear out Voice Commands/Quick Tip Card
- Encourage customers to press the Blue link button 

### □ CLOCK – page 27

- Demonstrate how to set clock (including daylight savings setting for Navigation equipped vehicles)

### □ HEADREST – page 05

- Demonstrate head rest adjustment

### □ MANUAL TRANSMISSION (if applicable) – page 29

- Demonstrate reverse gear engagement

### □ VEHICLE SETTINGS – pages 12-13 and 24-26

- Demonstrate vehicle settings in instrument cluster
- Demonstrate navigation use, enter dealer address
- Show radio presets

## MAINTENANCE

Scheduled Maintenance	Normal Usage		Severe Usage*	
Engine Oil And Filter	Replace	7,500 or 12 mos.	Replace	3,750 or 6 mos.
Tire Rotation	Perform	7,500	Perform	7,500
Air Cleaner Filter	Inspect Replace	7,500 30,000	Inspect Replace	Same As Normal More Frequently
Power Steering Fluid	Inspect	7,500	Inspect	Same As Normal
Vacuum Hose	Inspect	7,500	Inspect	Same As Normal
Climate Control Air Filter (For Evaporator And Blower Unit)	Replace	15,000	Replace	More Frequently
Air Conditioning Refrigerant	Inspect	15,000	Inspect	Same As Normal
Brake Hoses & Lines	Inspect	15,000	Inspect	Same As Normal
Brake Discs, Pads, Calipers & Rotors	Inspect	15,000	Inspect	More Frequently
Drive Shafts & Boots	Inspect	15,000	Inspect	7,500 or 6mos.
Exhaust Pipe & Muffler	Inspect	15,000	Inspect	Same As Normal
Power Steering Pump, Belt & Hoses	Inspect	15,000	Inspect	Same As Normal
Propeller Shaft	Inspect	15,000	Inspect	7,500 or 6 mos.
Steering Gear Box, Linkage & Boots/ Lower Arm Ball Joint, Upper Arm Ball Joint	Inspect	15,000	Inspect	More Frequently
Suspension Mounting Bolts	Inspect	15,000	Inspect	Same As Normal
Brake / Clutch Fluid	Inspect	30,000	Inspect	Same As Normal
Fuel Filter	Inspect	30,000	Inspect	Same As Normal
Fuel Lines, Fuel Hoses And Connections	Inspect	30,000	Inspect	Same As Normal
Fuel Tank Air Filter	Inspect	30,000	Inspect	Same As Normal
Rear Differential Oil	Inspect	37,500	Replace	80,000
Parking Brake	Inspect	15,000	Inspect	More Frequently
Vapor Hose & Fuel Filler Cap	Inspect	30,000	Inspect	Same As Normal
Manual Transmission Fluid	Inspect	37,500 or 30mos.	Replace	80,000
Valve Clearance	Inspect	60,000	Inspect	Same As Normal
Drive Belt (Alt, A/C)	1st Inspect 60,000 or 48mos. Add. Inspect 15,000 or 12mos.		Inspect	Same As Normal
Coolant	1st Replace 120,000 or 120mos. Add Replace 30,000 or 24mos.		Replace	Same As Normal
Automatic Transmission Fluid	No Check, No Service		Replace	60,000
Spark Plugs	Replace	105,000 or 84mos.	Replace	More Frequently

\*Check the engine oil regularly between recommended oil change. Hyundai recommends Quaker State oil.

\*See Owner's Manual for details.

Looking For more detailed information? This Quick Reference Guide does not replace your vehicle's Owner's Manual. If you require additional information or are unsure of a specific issue, you should always refer to the vehicle's Owner's manual or contact your authorized Hyundai dealer.

The information contained in this Quick Reference Guide was correct at the time of printing, however, specifications and equipment can change without notice. No warranty or guarantee is being extended in this Quick Reference Guide, and Hyundai reserves the right to change product specifications and equipment at any time without incurring obligations. Some vehicles are shown with optional equipment. Specifications apply to US vehicles only. Please contact your Hyundai dealer for current vehicle specifications.

NP150-G2014-B  
(Rev 08/26/15)  
Printing 08/29/15

HYUNDAI **GENESIS COUPE**  
Quick Reference Guide

[www.hyundai.com](http://www.hyundai.com)

Roadside Assistance: **1-800-243-7766**  
Consumer Affairs: **1-800-633-5151**  
XM® Radio: **1-800-967-2346**  
Blue Link: **1-855-2BLUELINK**  
**(1-855-225-8354)**

# Table of contents

## GETTING STARTED

Engine Start/Stop	03
Front seat adjustment	04
Headrest adjustment	05
Remote keyless entry	02
Seat belt adjustment	05

## FEATURES AND CONTROLS

Central door lock switch	07
Climate control	14-15
Cruise control system	16
Driver's main control	07
Electronic Stability Control (ESC)	31
Fuel filler door	06
Head lights and fog lights	08
Homelink wireless control system	11
Instrument cluster	12-13
Instrument panel illumination	13
Interior lights	11
Multigauge	30
Paddle shifter	28
Steering wheel adjustments	06
Steering wheel functions	16-17
Sunroof	10
Tire Pressure Monitoring System (TPMS)	30
Transmission	28-29
Trip computer	13
Wiper and washer	09

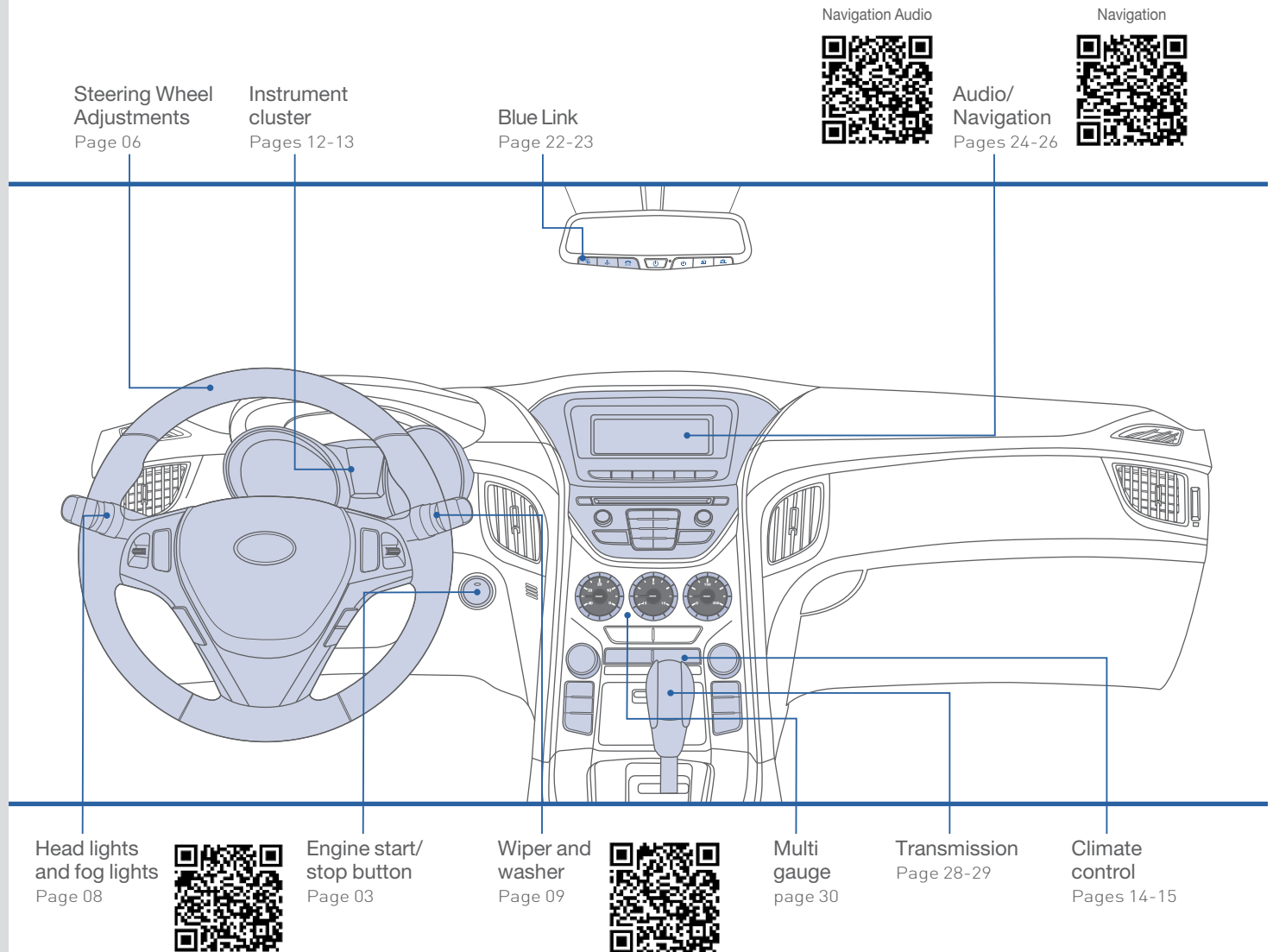
## MULTIMEDIA

AUX, USB, and iPod® Port	27
Blue Link Telematics system	22-23
Bluetooth operational tips	20-21
Bluetooth phone pairing	18-19
Clock adjustment	27
Standard radio	24
Navigation	25-26

\*Some vehicles may not be equipped with all the listed features.

## FREQUENTLY ASKED QUESTIONS

1. Pair phone to your vehicle. Refer to page 18.
2. Garage door opener set up. Refer to page 11.
3. Getting started with Blue Link. Refer to page 22-23.

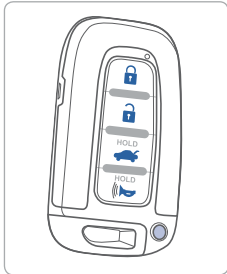


## WARNING!

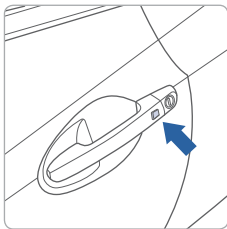
To reduce the risk of serious injury to yourself and others, read and understand the important SAFETY INFORMATION in your Owner's Manual.

## GETTING STARTED

### REMOTE KEYLESS ENTRY



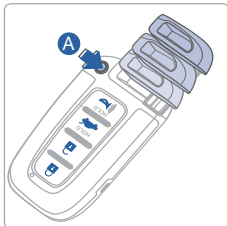
- Lock
- Unlock
- Tailgate unlock
- Panic



**Driver's door Lock/Unlock**  
Smart key must be within range.

**Press:**

- Once – Unlock driver door
- Twice – Unlock all doors
- Third – Lock all doors



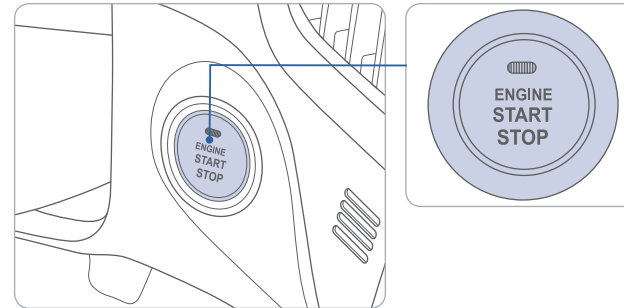
**Remove mechanical key**

Press and hold the release **A** button and remove the key.

**Reinstall mechanical key**

Put the key into the key slot and push it until a click sound is heard.

### ENGINE START/STOP BUTTON



**With the ignition OFF, press the engine start/stop button:**

- Once for ACC (Accessory) mode.
- Twice for ON mode.
- Three times for OFF.

**To start the engine, press the start/stop button while:**

- Depressing the brake pedal. (Automatic transmission)
- Depressing the clutch pedal. (Manual transmission)

**To shut engine OFF, shift to:**

- P (Park) and press the engine start/stop button.  
(Automatic transmission)
- Neutral and press the engine start/stop button. (Manual transmission)

**Emergency situations**

**Shut off engine while driving:**

Press engine start/stop button for more than 2 seconds or press it 3 times consecutively within 3 seconds.

**Restart engine while driving:**

Press engine start/stop button with shift lever in N (Neutral).

## FRONT SEAT ADJUSTMENT (MANUAL)



Forward and backward



Seat cushion height (for driver's seat)



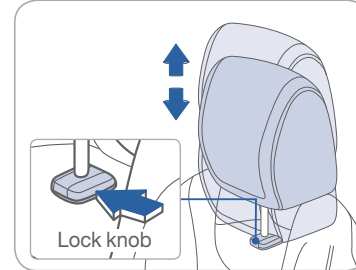
Seatback angle



Lumbar support (for driver's seat)

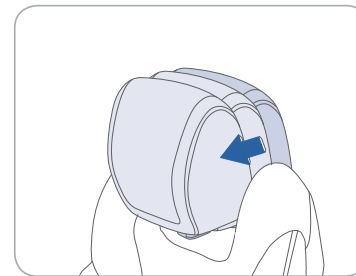


## HEADREST ADJUSTMENT



To raise headrest height, pull up on headrest.

To lower headrest, press lock knob while pushing down on headrest.



**To adjust headrest forward:**  
Pull headrest forward to one of three positions.

**To adjust headrest backward:**  
Pull headrest all the way forward, then release.

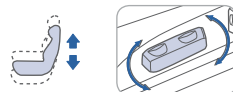
## FRONT SEAT ADJUSTMENT (POWER)



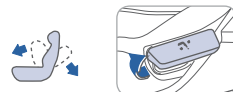
Forward and backward



Seat cushion height (for driver's seat)



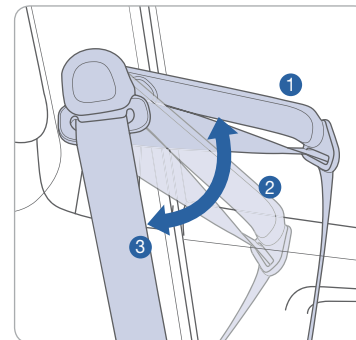
Seatback angle



Lumbar support (for driver's seat)



## SEAT BELT ADJUSTMENT

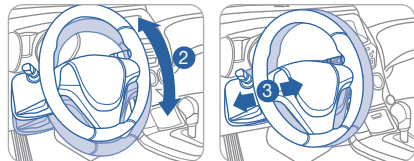
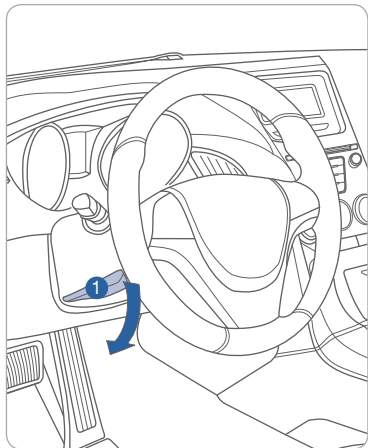


Set the belt extension guide to one of the 3 positions when using the seat belt.

See Owner's Manual for additional seat belt information.

## FEATURES AND CONTROLS

### STEERING WHEEL ADJUSTMENTS

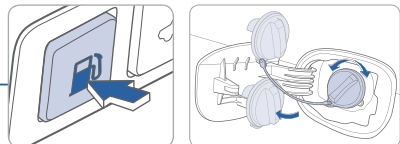
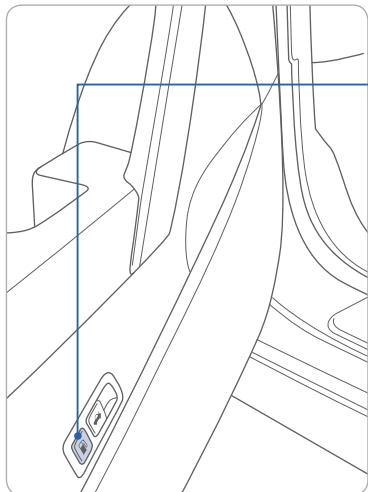


Tilt

Telescopic

- NOTE:** Do not adjust while driving.
1. Pull the lever **1** down to release.
  2. Set the angle **2** and distance **3**
  3. Pull the lever **1** up to lock.

### FUEL FILLER DOOR

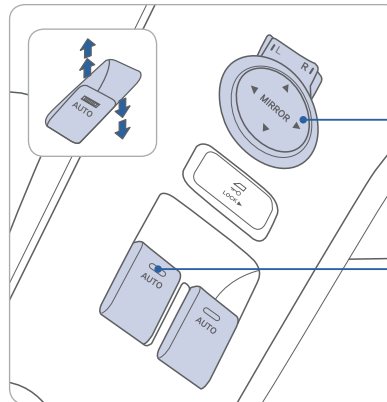


**NOTE**

After adding fuel, always reinstall the fuel cap onto the filler neck by rotating it clockwise until it clicks. Failure to do this may result in the Check Engine Light illuminating.

Check the engine oil regularly between recommended oil changes.

### DRIVER'S MAIN CONTROL



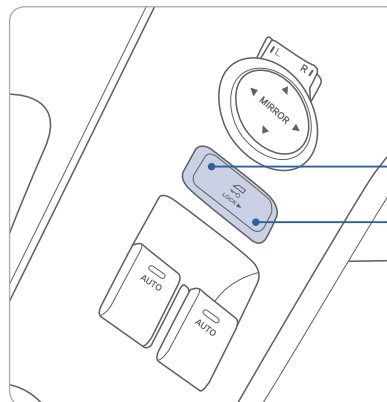
**Outside rearview mirrors**

Press L (left) or R (right) on the switch. Then adjust the mirror by using the directional switch.

**Window auto down/up**

Press past detent to fully open/close window.

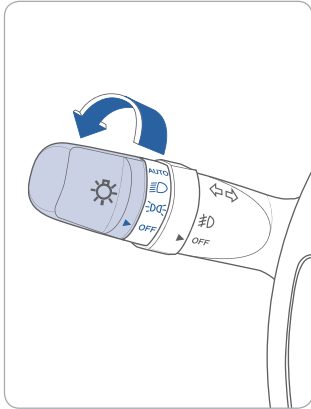
### CENTRAL DOOR LOCK SWITCH



All doors will lock

All doors will unlock

### HEAD LIGHTS AND FOG LIGHTS



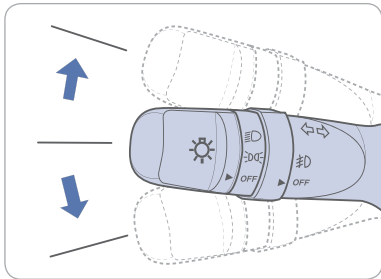
- ▶ | **AUTO** Auto light
- ▶ | Head light
- ▶ | Parking light
- ▶ | **OFF** OFF
- or
- ▶ | **DRL OFF** DRL OFF



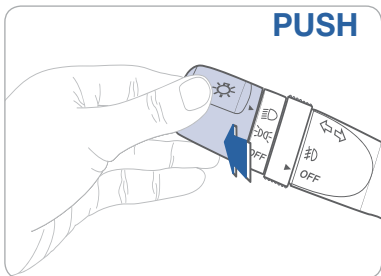
#### Escort Function

Head lights may stay on for 30 seconds after exiting and locking vehicle. Press remote lock button twice to turn head lights Off.

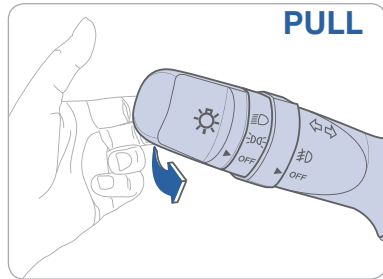
Turn signals and lane change signals



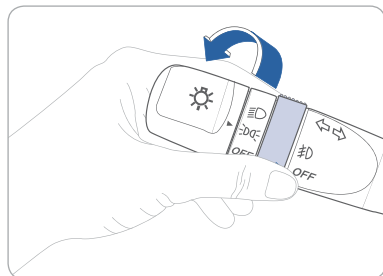
High beam



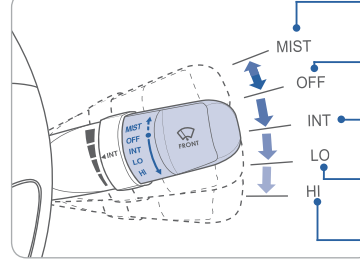
Flashing head lights



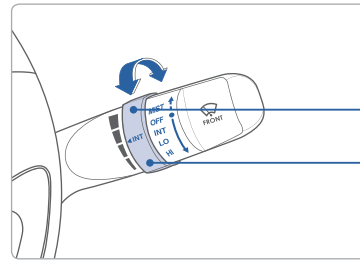
Fog light



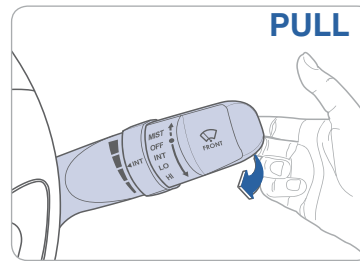
### WIPER AND WASHER



- MIST - Single wipe
- OFF - Off
- INT - Intermittent wipe
- LO - Normal wiper speed
- HI - Fast wiper speed



Intermittent wipe time adjustment



Fast wiper speed

Slow wiper speed

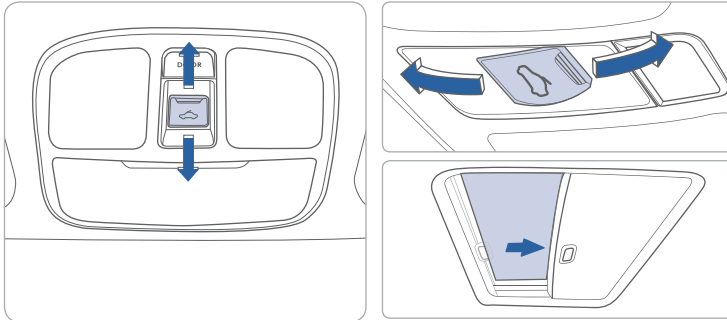
Wash with brief wipes



## FEATURES AND CONTROLS

### SUNROOF

#### Sliding the sunroof



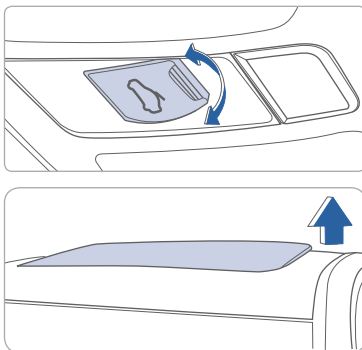
#### Open

Press switch rearward.  
Press switch rearward past the detent to open completely.

#### Close

Press switch forward.  
Press switch forward past the detent to close completely.

#### Tilting the sunroof



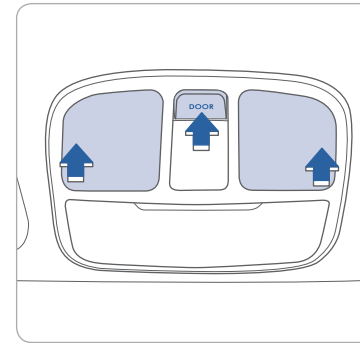
#### Tilt

Push or pull switch up or down.

#### NOTE

Do not leave the roller blind closed while the sun roof is opened.

### INTERIOR LIGHTS

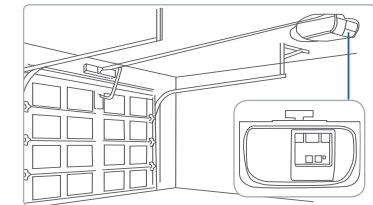
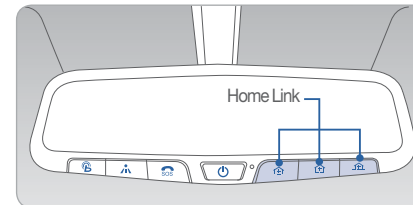


Push the switch to turn the map lamp On or Off.

#### DOOR

Lights will turn On when any door is open except trunk.

### HOMELINK WIRELESS CONTROL SYSTEM



#### Programming rolling code garage

Press and hold your selected HomeLink button for 20 seconds.  
Release when light flashes rapidly.

Press and release the “learn” or “smart” button on the garage door opener motor-head unit.

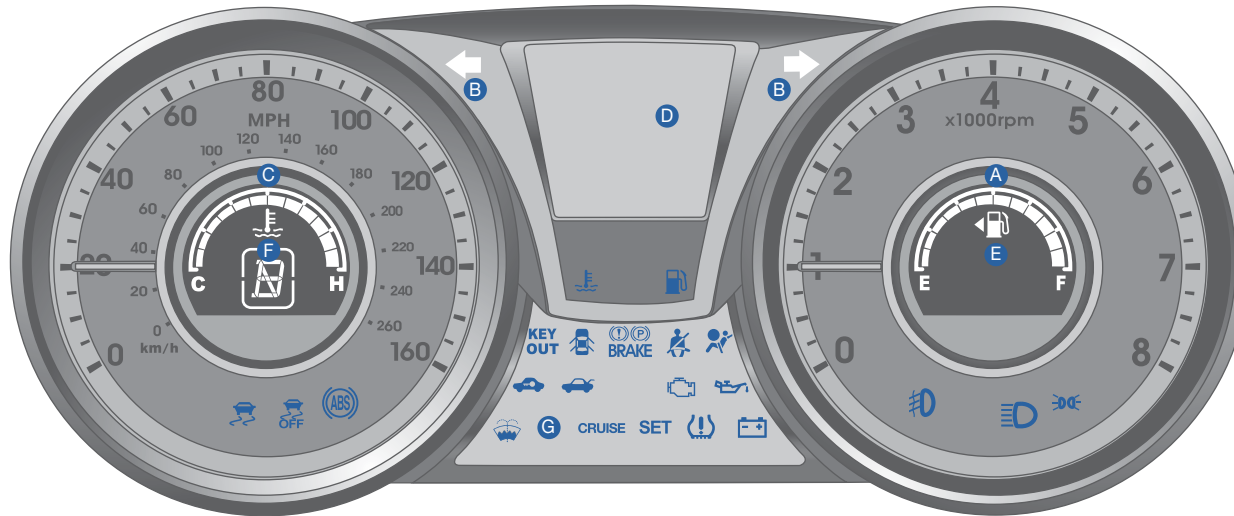
**NOTE:** There is a 30 seconds window to initiate next step.

Press and hold the desired HomeLink button for 2 seconds and release. Repeat this sequence up to 3 times. If programming is successful, the garage door should open or close during this step.

For detail instructions including “Standard type” garage door, refer to your Owner’s Manual or visit [www.homelink.com](http://www.homelink.com)

## FEATURES AND CONTROLS

### INSTRUMENT CLUSTER



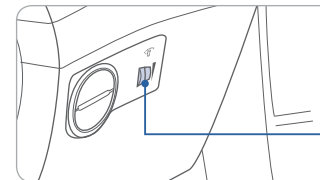
#### Cluster configuration

- A Tachometer
- B Turn signal indicators
- C Speedometer
- D LCD display
- E Fuel gauge
- F Engine coolant temperature gauge
- G Warning and indicator lights

### WARNINGS AND INDICATORS

Air bag warning light	Parking brake & Brake fluid warning light	ABS warning light
Seat belt warning light	Low Tire Pressure Indicator / TPMS (Tire Pressure Monitoring System) malfunction indicator	
High beam indicator	Engine oil pressure warning light	Charging system warning light
Engine coolant temperature warning light	Door open warning light	Turn signal indicator
Immobilizer indicator	Shift pattern indicator	Low beam indicator
Trunk open warning light	Low fuel level warning light	ESC (Electronic Stability Control) indicator
ESC (Electronic Stability Control) OFF indicator	CRUISE Cruise indicator	SET Cruise SET indicator
Malfunction indicator light	Front fog light indicator	Light on indicator

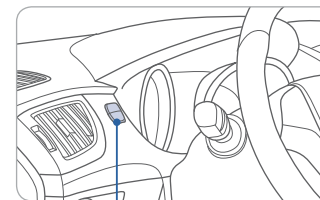
### INSTRUMENT PANEL ILLUMINATION



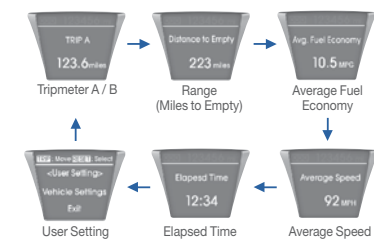
Rotate the control knob to adjust the brightness.



### TRIP COMPUTER



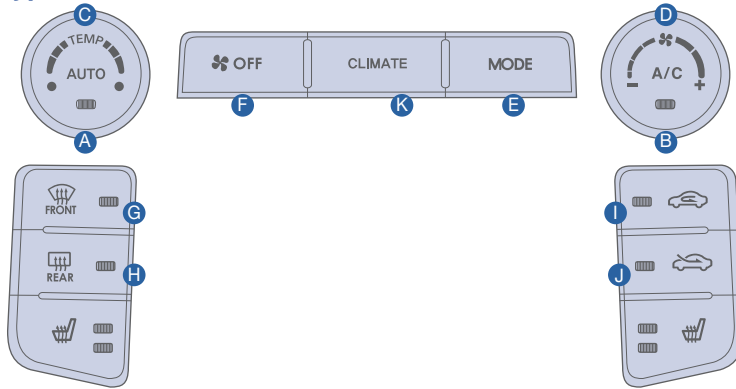
Press the TRIP button for less than 1 second to select function as follows:





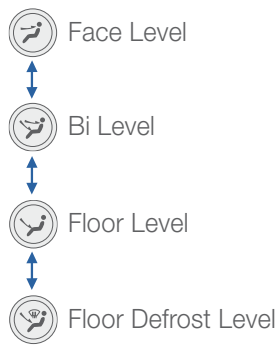
## CLIMATE CONTROL

### Type A

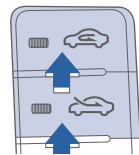


- A** AUTO (automatic control) button
- B** Air Conditioning button
- C** Temperature control knob
- D** Fan speed control knob
- E** Mode selection buttons
- F** OFF button
- G** Front windshield defroster button
- H** Rear window defroster button
- I** Air intake control button
- J** Air intake control button
- K** Climate information screen button

### MODE SELECTION



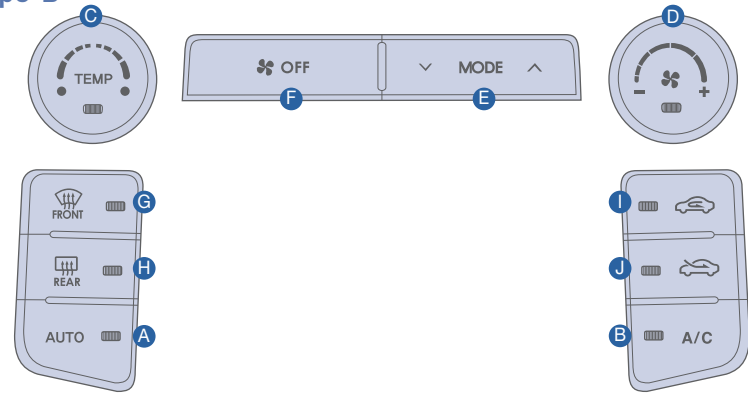
### AIR INTAKE CONTROL



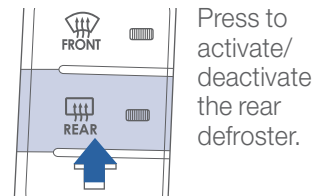
This is used to select outside (fresh) air position or recirculated air position.

- Outside (fresh) air position
- Recirculated air position

### Type B

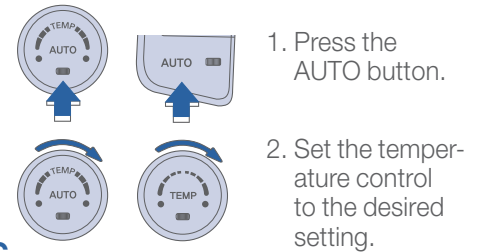


### REAR WINDOW DEFROSTER

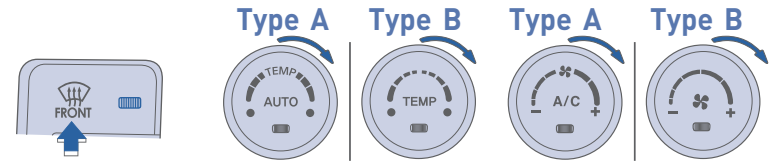


### AUTOMATIC HEATING AND COOLING

#### Type A Type B



### DEFROSTING/DEFOGGING



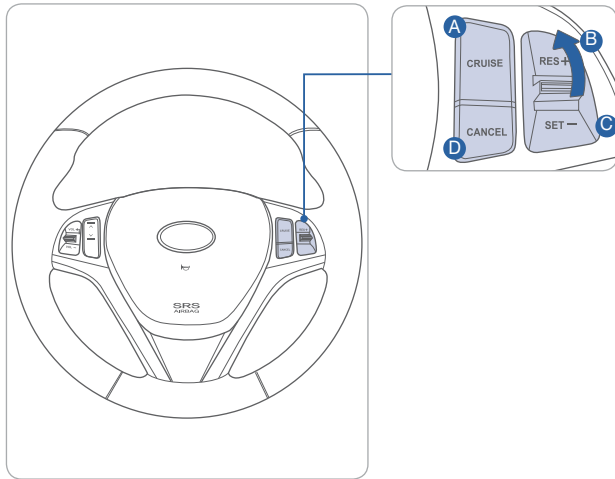
**NOTE:** To reduce the tendency of the glass fogging and improve visibility, keep the interior surface of the windshield clean by wiping it with a clean cloth and glass cleaner.

In addition, select air intake control to the outside (fresh) air position whenever possible while operating the vehicle.

## FEATURES AND CONTROLS

### STEERING WHEEL FUNCTIONS

#### Cruise control



##### To set a cruising speed

1. Press CRUISE button **A** and the CRUISE indicator will illuminate in the instrument cluster.
2. Accelerate to desired cruising speed (above 25 mph).  
Move the lever down (to SET-), release, and remove your foot from the accelerator pedal.

##### To accelerate or decelerate

Move the lever up (to RES+) **B** to increase set cruising speed.

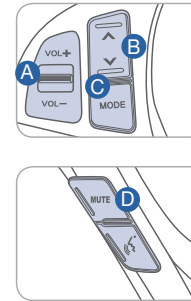
Move the lever down (to SET-) **C** to decrease set cruising speed.

##### To cancel cruising speed

Press CANCEL button **D**, depress brake pedal, or press CRUISE button **A**.

#### Audio control

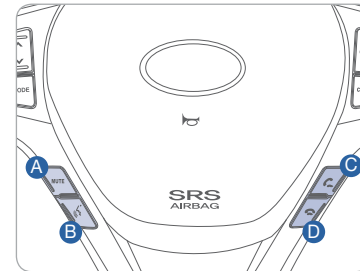
Cruise control:



- A VOLUME**– Raise or lower speaker volume.
- B SEEK / PRESET**– Press to change presets. Press and hold to seek stations.
- C MODE**– Change the audio source. Hold to turn Audio power ON/OFF.
- D MUTE**– Mute the sound.

Please refer to your Owner's Manual for more detailed information on how to use your audio system. Complimentary XM<sup>®</sup> subscription ends three months following the vehicle date of sale. Please contact XM<sup>®</sup> Radio at 1-800-XM-RADIO (1-800-967-2346) to renew your XM subscription.

#### Bluetooth control



- A MUTE**  
Mute the telephone during a call.
- B TALK**  
Activate voice recognition.
- C CALL**  
Place and transfer call.
- D END**  
End call or cancel function.

**NOTE:** The actual steering wheel controls in the vehicle may differ from the illustration as your vehicle may be equipped with different options.

\*Bluetooth is a wireless technology that allows multiple devices to be connected in a short range, low powered devices like hands-free, stereo headset, wireless remocom, etc. For more information, visit the website at [www.bluetooth.com](http://www.bluetooth.com)

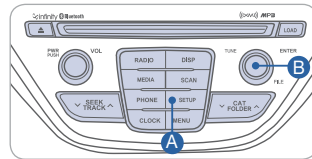
## BLUETOOTH PHONE PAIRING

Pairing tutorials, phone compatibility and Operational tips can be found through the Smart QR code using the QR reader application on your Smartphone.



### Standard radio

Vehicle must be parked to complete phone pairing process.

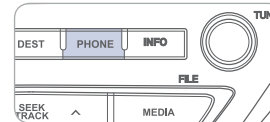


1. Push the SETUP button **A**.
2. Select "Phone" by rotating the TUNE knob **B**, then push the knob.
3. Select "Pair" by rotating the TUNE knob **B**, then push the knob.
4. Enable Bluetooth on your phone.
5. Select "GENESIS COUPE" from the Bluetooth device list on your mobile phone and input passkey displayed on the screen. Continue pairing.
6. After pairing is completed, transfer of the contact list to the audio system will begin (if your phone is supported).

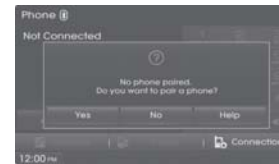
**NOTE:** If experiencing difficulty using Voice Recognition to place a call, be sure you are using the actual full contact name as entered in your phone book, not a casual or nick-name (e.g., if name was entered as "Robert Smith", say "Call Robert Smith", not "Call "Bob Smith").

## Phone setup (Pairing phone) with Navigation

1. Press the call button on the steering wheel remote controller or press the PHONE button.
3. Search for the car name and pair the device.
4. Input the passkey. (The initial passkey is 0000.)



2. Press Yes button on the screen.
5. Bluetooth® becomes connected.



### NOTE

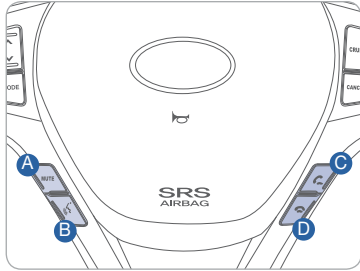
After pairing is completed, transfer of the contact list to the audio system will begin (if your phone is supported).

## BLUETOOTH OPERATIONAL TIPS

In the following situations you or the other party may have difficulty hearing each other:

1. When the Bluetooth volume is at a high level. Keep the Bluetooth volume to a low level to reduce distortion and echo.
2. When driving on a rough road, high speeds and/or with the window open.
3. When the air conditioning vents are facing the microphone and/or when the air conditioning fan is at the max speed.

### Steering wheel bluetooth control



- A MUTE**  
Mute the telephone during a call.
- B TALK**  
Activate voice recognition.
- C CALL**  
Place and transfer call.
- D END**  
End call or cancel function.

#### To Answer a Call:

- Press button on the steering wheel.

#### To Reject a Call:

- Press button on the steering wheel.

#### To Adjust Ring Volume:

- Use the VOLUME buttons on the steering wheel.

#### To Transfer a Call to the Phone

##### (Secret Call):

- Press and hold button on the steering wheel until the audio system transfers a call to the phone.

#### To Finish a Call:

- Press button on the steering wheel.

### Making a call using voice recognition:

The menu tree identifies available voice recognition Bluetooth® functions.

#### Calling by Name:

1. Press button.
2. Say the following command:
  - “Call <John>”: Connects the call to John.
  - “Call <John> on <Mobile/Home/Office>”: Connects the call to John’s Mobile, Home, or Office phone number.

#### Dialing by Number:

1. Press button.
2. Say “Call”.
3. Say “By number” when prompted.
4. Say desired phone numbers.
5. Say “Dial” to complete the number and make a call.

For complete list of commands, refer to your Owner’s Manual.

## VOICE RECOGNITION TIPS

Your vehicle is equipped with Voice Recognition technology which allows drivers to operate their phones without having to take their eyes off the road to minimize distractions.

Voice recognition performance may be affected if driving with windows and sun roof open; when the heating-cooling system is on; when passing in a tunnel or when driving on rugged and uneven roads.

Quick reference on using voice commands

To start voice command. Press the key, the following commands are available:

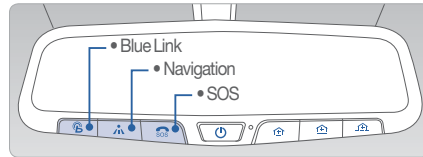
Command	Function	Standard	Navigation
Help	Provides guidance on commands that can be used within the current mode.	X	X
Calls <Name>	Calls <Name> saved in Contacts. Ex) Call “John”	X	X
Dial <Number>	Call can be made by dialing the spoken numbers. Ex) Call “123”	X	X
Phone	Provides guidance on Phone related commands. After saying this command, say “Call History”, “Contacts” to execute corresponding functions.		X
Call History	Displays the Call History screen.		X
Contacts (Call by Name)	Displays the Contacts screen. After saying this command, say the name of a contact saved in the Contacts to automatically connect the cell.		X
Dial Number	Display the Dial number screen. After saying this command, you can say the number what you want to call.		X

## BLUE LINK CONNECTED CAR SYSTEM

Press the button for access to the voice-response menu of services.

You have two options:

- You can say, "Main Menu" for a listing of main menu choices.
- You can directly select any of the listed menu items by saying its name.



### In-Car Voice Response Commands

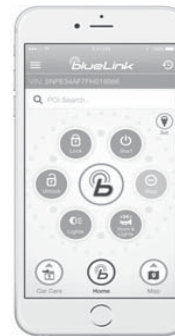
New Destination  
Service Link  
Roadside Assistance  
Valet Alert  
Help  
Cancel

- Press the button for navigation-related services.
- Press the button for SOS Emergency Assistance.
- Refer to your Blue Link User's Manual for detailed information on system operation.
- For immediate assistance with subscription services, please call 1-855-2BLUELINK (1-855-225-8354).
- Please register your Blue Link at [www.MyHyundai.com](http://www.MyHyundai.com).

You must be an active Blue Link subscriber or within the initial free trial period to receive Blue Link services, including emergency assistance services.

## Remote door unlock/lock

### Blue Link Mobile App



You can download the Blue Link mobile app to your compatible smart phone from the following sites:

- iPhone® — Apple® App Store
- Android® — Google Play

With this feature, you can lock or unlock your vehicle doors from virtually anywhere by using the Blue Link mobile phone app, by dialing the toll-free number, or by using the Blue Link owner's website.

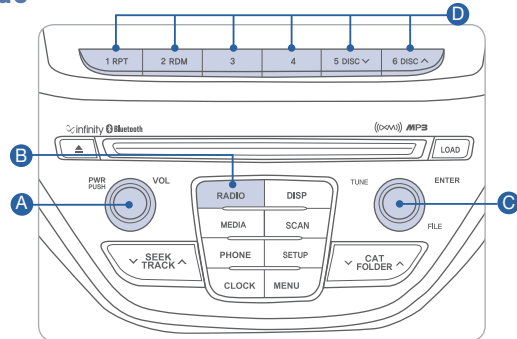
- To use this feature, you must have a Blue Link Personal Identification Number (PIN). To create or change your PIN, log on to [www.MyHyundai.com](http://www.MyHyundai.com).

### To Activate Remote Door Unlock/Lock

- By Blue Link Mobile App: Select DOOR UNLOCK or DOOR LOCK, as desired.
  - Enter your Blue Link PIN.
  - The command to lock or unlock your doors will be sent to your vehicle.
- By phone: Dial toll-free 1-855-2-BLUELINK (1-855-225-8354).
- By web site: Log on to [www.MyHyundai.com](http://www.MyHyundai.com), select Blue Link.
  - Select Remote Services, then Remote Door Unlock/Lock.
  - Input your Blue Link PIN. (If you need time to get to your vehicle, specify a time delay before your vehicle will be unlocked.)

## STANDARD RADIO

### Audio mode



Press POWER button **A** to turn radio on.

#### • TUNING / LISTENING TO CHANNELS

1. Press RADIO **B**.
2. Rotate TUNE knob **C** to desire channel.

**NOTE** A clear view of the southern sky is recommended to ensure XM<sup>®</sup> radio reception.

#### • SETTING PRESET MEMORY BUTTONS (FM/AM/XM<sup>®</sup>)

Press and hold any preset button (1-6) **D** until audible beep is heard to store current channel.

#### • ADJUSTING THE SOUND

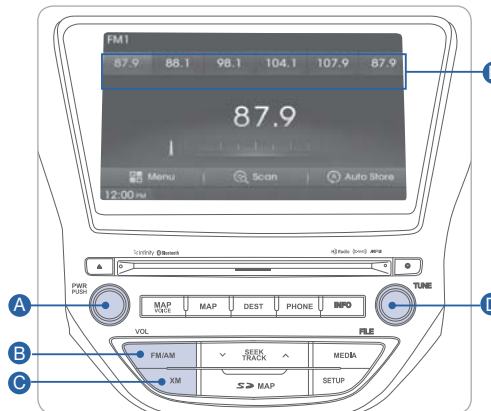
1. Press TUNE knob **C**.
2. Select "Bass, Middle, Treble, Fader, Balance" by pressing on TUNE knob **C**. Rotate TUNE knob **C** to adjust.
3. Press TUNE knob **C** when done.

### Blue Link Telematics System

Your audio display will change during Blue Link system use. Please refer to the Blue Link User's Manual for detailed information on system use.

## NAVIGATION

### Audio mode



#### NOTE

HD Radio is default OFF. Use setup → Main to change setting.

**NOTE** A clear view of the southern sky is recommended to ensure XM<sup>®</sup> radio reception.

Press POWER button **A** to turn radio on.

#### • TUNING / LISTENING TO CHANNELS

1. Press FM/AM **B** or XM<sup>®</sup> **C**.
2. Press TUNE **D** to switch to desire channel.

• Press and hold any preset buttons **E** until audible beep is heard to store current channel.

#### • ADJUSTING THE SOUND

1. Touch the SOUND button on the main screen.
2. Touch the arrows on screen to adjust desired sound setting.

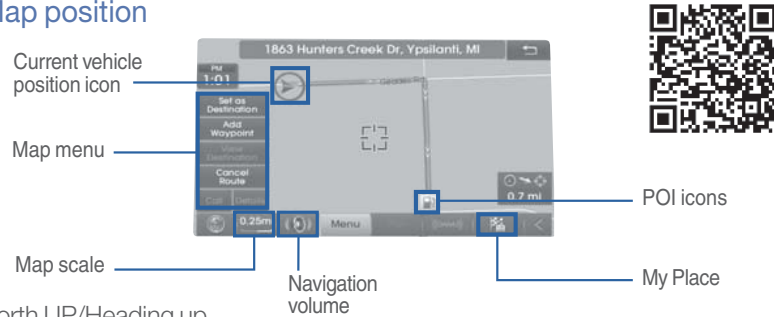




## MULTIMEDIA

### NAVIGATION

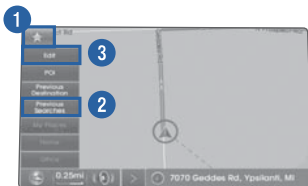
#### Map position



North UP/Heading up.

- Displays the current map mode to reflect the position in reference to the screen. The map mode can be switched between North Up and Heading Up.
- Each time the button is pressed, the screen will switch in the order shown below.
  - Heading Up → North Up → Heading Up →
  - Map Scale: Increases or decreases the map size.
  - Map Scale indicator: shows the scale of the map.
  - Map Voice Key: Activate/deactivate the voice guidance.

#### Destination menu

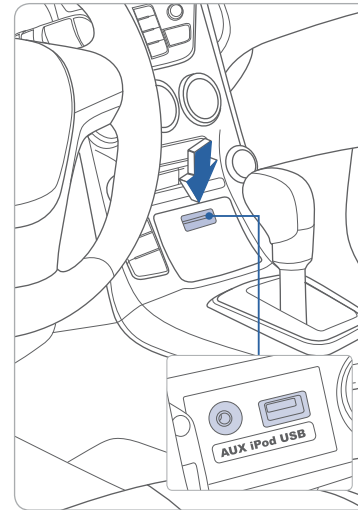


#### Quick Menu

Press the button on the left side of the map screen to display the Quick Menu.

1. Quick Menu – Display/hide Quick Menus
2. Quick Menu Bar – Menus added to the Quick Menu (possible to set up to 6 menus)
3. Edit - Add/Delete Quick Menus
4. Current Quick Menus – Shows list of current Quick Menus
5. Add/Remove – Add or remove Quick Menus
6. Quick Menu Categories – List of categories that can be added to Quick Menus

### AUX, USB AND iPod PORT



Use the jack to connect an external audio device and listen to it through the audio system in your vehicle.

#### NOTE

##### Standard radio:

- A Hyundai adapter cable is required. This cable can only be purchased at your local Hyundai dealer.

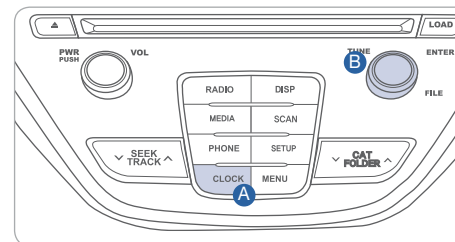
##### Navigation:

- Connect your Apple supplied USB cable to the USB port.

iPod® is a trademark of Apple Inc.

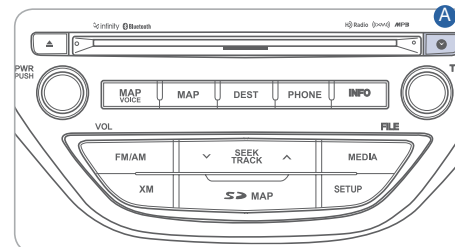
### CLOCK ADJUSTMENT

#### Audio



1. Turn radio off.
2. press the CLOCK button until the clock of the display blink.
3. Set the clock by turning the knob and press to select the desired time.

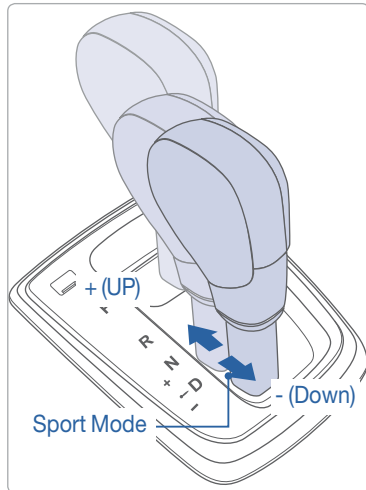
#### Navigation



1. Press and hold CLOCK .
2. Touch or to set the clock.
3. Touch “Done” when finished.

## FEATURES AND CONTROLS

### AUTOMATIC TRANSMISSION

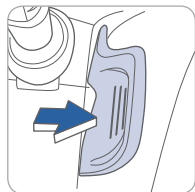


#### Sport mode

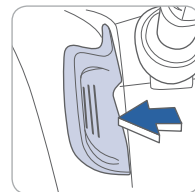
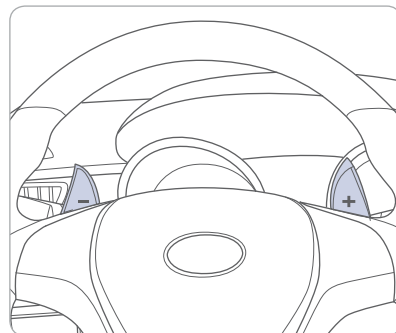
Move the shift lever from D (Drive) to the left gate to select.

Move the shift lever forward (+) to upshift or rearward (-) to downshift.

### PADDLE SHIFTER



Pull (-) to down shift

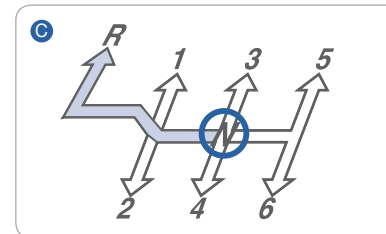
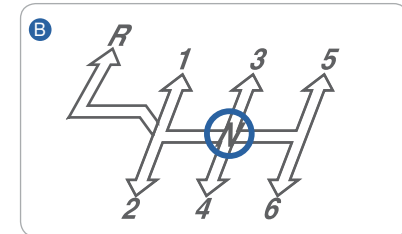
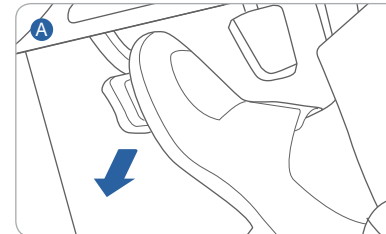


Pull (+) to up shift

The paddle shifter is available when the shift lever is in the D position or the sport mode.

Pull the [+] or [-] paddle shifter once to shift up or down one gear.

### MANUAL TRANSMISSION

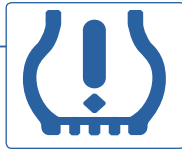
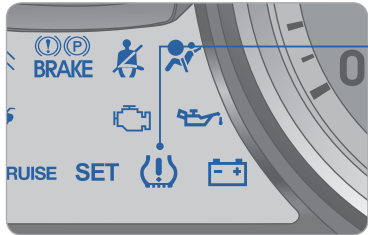


#### Shifting into Reverse

1. Depress the clutch fully **A**
2. Shift into Neutral **B**
3. Push the shift lever to the left side of the 1 st gear **B**
4. Shift into Reverse **C**

NOTE: A single audible beep can be heard when engaging reverse.

## TIRE PRESSURE MONITORING SYSTEM (TPMS)



Low tire pressure indicator / TPMS malfunction indicator

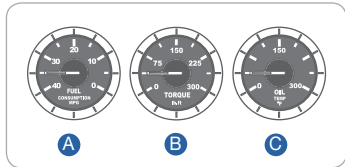
### Low Tire Pressure Indicator

Illuminates if one or more of your tires is significantly under-inflated.

### TPMS Malfunction Indicator

Blinks for approximately one minute then remains illuminated when there is a malfunction with the TPMS system. Have the system checked by an authorized Hyundai dealer.

## MULTI GAUGE



**A** : It shows instantaneous change of the fuel consumption.

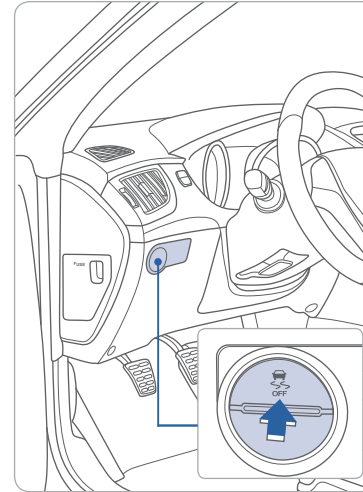


**B** : It shows instantaneous change of the Torque by rpm.



**C** : It shows instantaneous change of the Engine oil temperature.

## ELECTRONIC STABILITY CONTROL (ESC)



The ESC system is an electronic system designed to help the driver maintain vehicle control under adverse conditions.

This vehicle features driver-selectable

### 2-stage ESC



#### Stage 1

Press and release the ESC OFF button. This stage disables engine power cutoff. Braking intervention remains active.



#### Stage 2

Press and hold the ESC OFF button for 3 seconds. This stage disables both engine power cut off and braking intervention. Note that ABS remains active at all time.

### Key Websites

Hyundai website - [www.hyundai.com](http://www.hyundai.com)

Hyundai owner website - [www.myhyundai.com](http://www.myhyundai.com)

Bluetooth phone compatibility - [www.hyundaiusa.com/bluetooth](http://www.hyundaiusa.com/bluetooth)

Blue Link - [www.hyundaiusa.com/technology/bluelink](http://www.hyundaiusa.com/technology/bluelink)



MEMO



Two vertical columns of horizontal lines for writing notes on page 32 and 33.

**GENESIS COUPE CUSTOMER DELIVERY CHECK LIST**

HYUNDAI OWNER	DEALERSHIP NAME
SALES CONSULTANT	DATE
VIN	PREVIOUS VEHICLE

**BEFORE DELIVERY**

- CONFIRM "GOOD BATTERY" USING GR8 AND STAPLE TEST TICKET HERE
- SET TIRE PRESURE LF \_\_\_ RF \_\_\_ RR \_\_\_ LR \_\_\_
- VERIFY VEHICLE IS CLEAN, IN GOOD CONDITION, FREE OF CHIPS AND SCRATCHES · CLEAN WINDSHIELD AND BACK WINDOW
- ENSURE FLOORMATS ARE SNAPPED INTO PLACE

Sales Consultant	Date	Sales Manager	Date
Customer			Date
Email @			