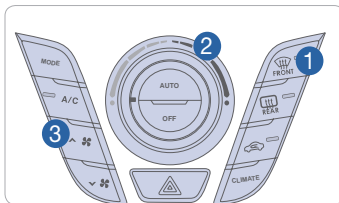


WALK THE CUSTOMER THROUGH EACH OF THE FOLLOWING KEY DELIVERY FEATURES

☐ DEFROST - page 14-17

- 1 Press the front defrost button.
- 2 Set to warmest temperature setting.
- 3 Set to highest fan speed.




☐ BLUETOOTH – page 22

- Demonstrate phone pairing
- Refer to www.hyundaiusa.com/bluetooth
- Demonstrate QR code



☐ BLUE LINK – pages 23-24

- Assist with creating MyHyundai.com account
- Assist with Blue Link enrollment
- Show Blue Link Users Manual & tear out Voice Commands/Quick Tip Card
- Encourage customers to press the Blue link button  after enrollment to initiate Welcome Call

☐ CLOCK – pages 32

- Demonstrate how to set clock (including daylight savings setting for Navigation equipped vehicles)

☐ NAVIGATION (if applicable) – page 26

- Demonstrate navigation system POI, enter dealer address

☐ TIRE PRESSURE MONITORING SYSTEM (TPMS) – page 31

- Explain TPMS function of customer
- When illuminated, one or more tires are under-inflated
- Blinks for approximately one minute then remains illuminated when there is a malfunction with the TPMS



☐ VEHICLE SETTINGS – pages 12-13 and 26-27

- Demonstrate vehicle settings in instrument cluster
- Demonstrate navigation use, enter dealer address
- Show radio presets

MAINTENANCE

Scheduled Maintenance	Normal Usage		Severe Usage*	
Engine Oil And Filter*	1st Replace Add'l Replace	3,000 or 6 mos. 5,000 or 6 mos.	Replace	3,000 or 3 mos.
Fuel Additives *1	1st Add Add'l Add	3,000 or 6 mos. 5,000 or 6 mos.	Add Same as Normal	
Tire Rotation	Perform	7,500	Perform	7,500
Air Cleaner Filter	Inspect Replace	7,500 30,000	Inspect Replace	Same As Normal More Frequently
Battery Condition	Inspect	7,500	Inspect	Same As Normal
Vacuum Hose	Inspect	7,500	Inspect	Same As Normal
Climate Control Air Filter (For Evaporator And Blower Unit)	Replace	15,000	Replace	More Frequently
Air Conditioning Refrigerant	Inspect	15,000	Inspect	Same As Normal
Brake Hoses & Lines	Inspect	15,000	Inspect	Same As Normal
Drive Shafts & Boots	Inspect	15,000	Inspect	7,500 or 6 mos.
Electronic Throttle Control	Inspect	15,000	Inspect	Same As Normal
Exhaust Pipe & Muffler	Inspect	15,000	Inspect	Same As Normal
Front Disc Brake/Pads, Calipers	Inspect	15,000	Inspect	More Frequently
Rear Brake Drums/Linings Rear Brake Disc/Pads	Inspect	15,000	Inspect	More Frequently
Steering Gear Box, Linkage & Boots/ Lower Arm Ball Joint, Upper Arm Ball Joint	Inspect	15,000	Inspect	More Frequently
Suspension Mounting Bolts	Inspect	15,000	Inspect	Same As Normal
Brake/Clutch Fluid	Inspect	30,000	Inspect	Same As Normal
Fuel Filter	Inspect	30,000	Inspect	Same As Normal
Fuel Lines, Fuel Hoses And Connections	Inspect	30,000	Inspect	Same As Normal
Fuel Tank Air Filter	Inspect	30,000	Inspect	Same As Normal
Parking Brake	Inspect	30,000	Inspect	More Frequently
Vapor Hose, Fuel Tank & Fuel Filler Cap	Inspect	30,000	Inspect	Same As Normal
Valve Clearance	Inspect	60,000	Inspect	Same As Normal
Manual Transmission Fluid	Inspect	37,500	Replace	75,000
EcoShift Dual Clutch Transmission Fluid	Inspect	37,500	Replace	75,000
Drive Belt (Alt, A/C)	1st Inspect 60,000 or 72 mos. Add. Inspect 15,000 or 24 mos.		Inspect	Same As Normal
Spark Plugs (Iridium Coated)	Replace	105,000	Replace	More Frequently
Coolant	1st Replace 120,000 or 10 yrs. Add Replace 30,000 or 24 mos.		Replace	Same As Normal

*Check the engine oil regularly between recommended oil change. Hyundai recommends Quaker State oil.

*1 If TOP TIER Detergent Gasoline is not available, one bottle of additive is recommended. Additives are available from your authorized Hyundai dealer along with information on how to use them. Do not mix other additives.

*See Owner's Manual for details.

Looking for more detailed information? This Quick Reference Guide does not replace your vehicle's Owner's Manual. If you require additional information or are unsure of a specific issue, you should always refer to the vehicle's Owner's Manual or contact your authorized Hyundai dealer.

The information contained in this Quick Reference Guide was correct at the time of printing, however, specifications and equipment can change without notice. No warranty or guarantee is being extended in this Quick Reference Guide, and Hyundai reserves the right to change product specifications and equipment at any time without incurring obligations. Some vehicles are shown with optional equipment. Specifications apply to U.S. vehicles only. Please contact your Hyundai dealer for current vehicle specifications.

NP150-V2014-A
(Rev 10/20/14)
Printing 10/23/14

HYUNDAI

VELOSTER TURBO

Quick Reference Guide



www.hyundai.com

 **HYUNDAI**
NEW THINKING.
NEW POSSIBILITIES.

Roadside Assistance: **1-800-243-7766**
Consumer Affairs: **1-800-633-5151**
XM® Radio: **1-800-967-2346**
Blue Link: **1-855-2BLUELINK**
(1-855-225-8354)

Table of contents

GETTING STARTED

Engine Start/Stop	03
Remote keyless entry	02
Front seat adjustment	04
Headrest adjustment	04
Seat belt adjustment	05

FEATURES AND CONTROLS

Active ECO System	33
Central door lock switch	07
Child-protector rear door lock	11
Climate control	14-17
Clock adjustment	32
Cruise control system	18
Driver's main control	07
Electronic Stability Control (ESC)	33
Fuel door	06
Head lights and fog lights	08
Instrument cluster	12-13
Instrument panel illumination	13
Interior lights	11
Rearview camera	31
Seat warmer	32
Steering wheel adjustments	06
Steering wheel controls	18-19
Sunroof	10
Transmissions	29-30
Trip computer	13
Tire Pressure Monitoring System (TPMS)	31
Wiper and washer	09

MULTIMEDIA

Audio	25
AUX, USB, and iPod® Port	28
Blue Link® Telematics system	23-24
Bluetooth operational tips	20-21
Bluetooth phone pairing	22
Navigation	26-27

How to:

1. Pair phone to your vehicle. Refer to page 22.
2. Get started with Blue Link. Refer to page 23-24.



Steering wheel adjustments
Page 06



Instrument cluster
Pages 12-13

Standard Audio

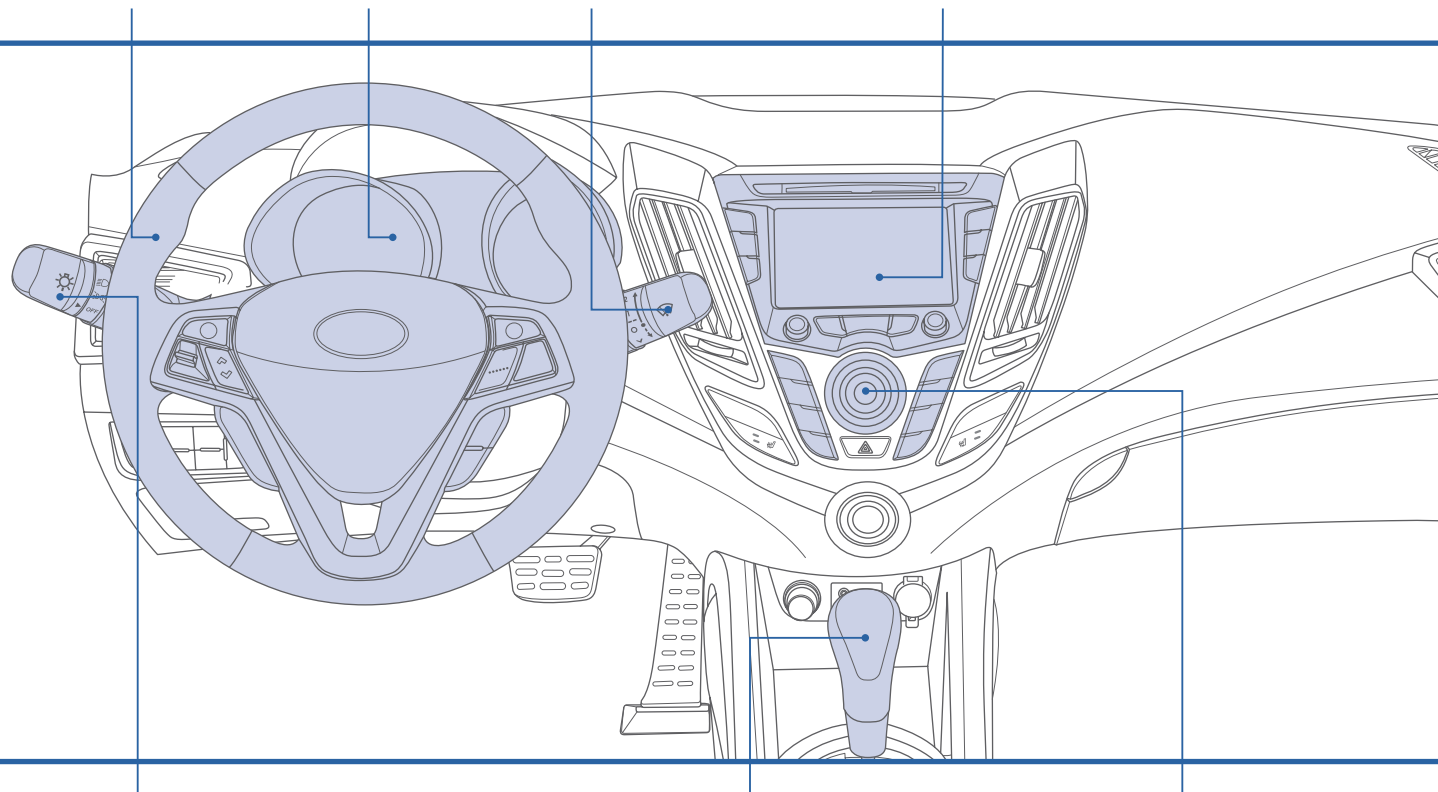


Audio/
Navigation
Pages 25-27

Navigation Audio



Navigation



Head lights
and fog lights
Page 08



Transmission
Pages 29-30



Climate
control
Pages 14-17

*Some vehicles may not be equipped with all the listed features.

Use this Quick Reference Guide to learn about the features that will enhance your enjoyment of your Hyundai. More detailed information about these features are available in your Owner's Manual.

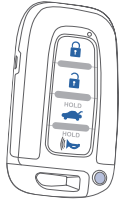
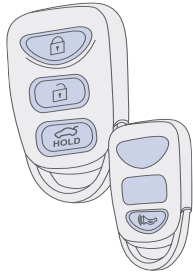






WARNING!

To reduce the risk of serious injury to yourself and others, read and understand the important SAFETY INFORMATION in your Owner's Manual.



REMOTE KEYLESS ENTRY

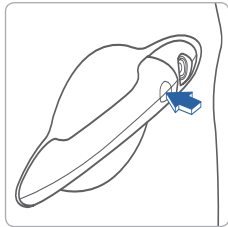


-  Lock
-  Unlock
-  Tailgate unlock (press and hold)
-  Panic

Keyless Entry



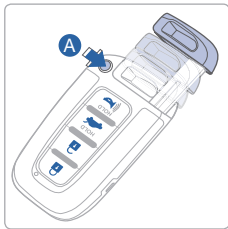
Smart Key



Driver's door Lock/Unlock
Smart key must be within range.

Press:

- Once – Unlock driver door
- Twice – Unlock all doors
- Third – Lock all doors



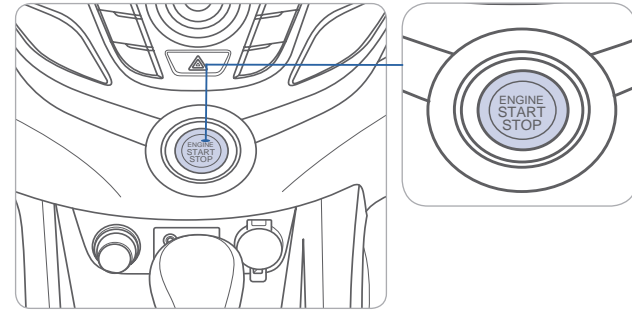
Remove mechanical key

Press and hold the release **A** button and remove the key.

Reinstall mechanical key

Put the key into the key slot and push it until a click sound is heard.

ENGINE START/STOP BUTTON



With the ignition OFF, press the engine start/stop button:

- Once for ACC (Accessory) mode.
- Twice for ON mode.
- Three times for OFF.

To start the engine, press the start/stop button while:

- EcoShift Dual Clutch Transmission: depressing the brake pedal.
- Manual Transmission: depressing the clutch and brake pedals.

To shut engine OFF, shift to:

- EcoShift Dual Clutch Transmission: P (Park) and press the start/stop button.
- Manual Transmission: Select 1st gear or Neutral, apply the hand brake, and press the start/stop button.

Emergency situations

Shut off engine while driving:

Press engine start/stop button for more than 2 seconds or press it 3 times consecutively within 3 seconds.

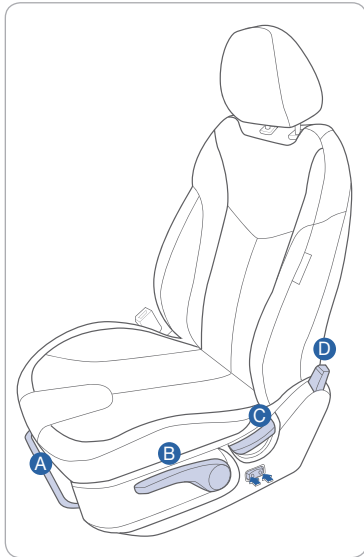
Restart engine while driving:

Press engine start/stop button with shift lever in N (Neutral).

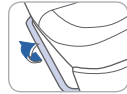


GETTING STARTED

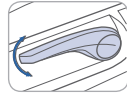
FRONT SEAT ADJUSTMENT



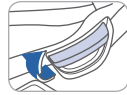
A Forward / backward



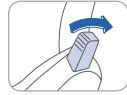
B Seat cushion height (driver's seat only)



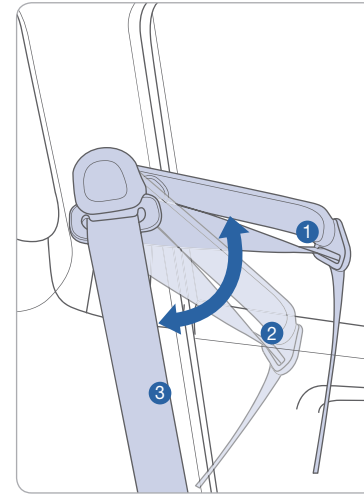
C Seatback angle



D Folding Lever (driver's seat only)



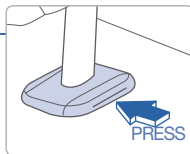
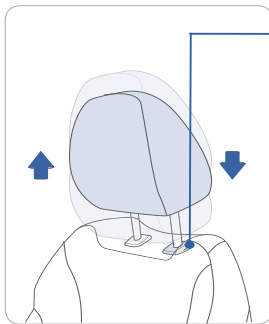
SEAT BELT ADJUSTMENT (Driver's Front seat)



Set the belt extension guide to one of the 3 positions when using the seat belt.

See Owner's Manual for additional seat belt information.

HEADREST ADJUSTMENT

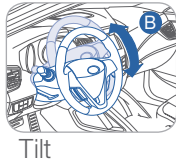
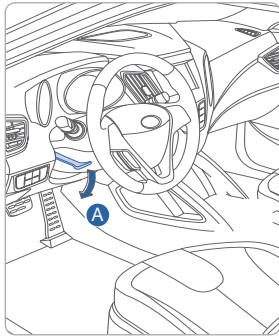


To Raise Headrest:
Pull headrest up.

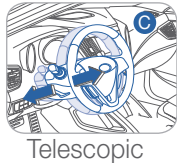
To Lower Headrest:
Press lock knob while pressing down on headrest.



STEERING WHEEL ADJUSTMENTS



Tilt



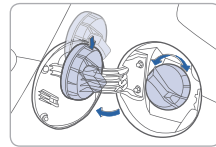
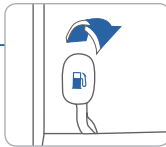
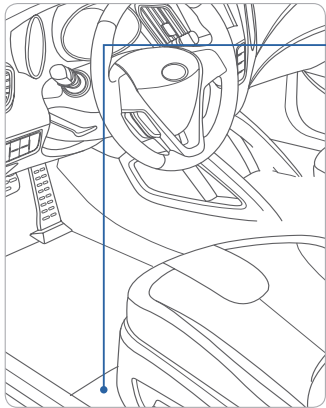
Telescopic



NOTE: Do not adjust while driving.

1. Pull the lever **A** down to release.
2. Set the angle **B** and distance **C**
3. Pull the lever **A** up to lock.

FUEL DOOR



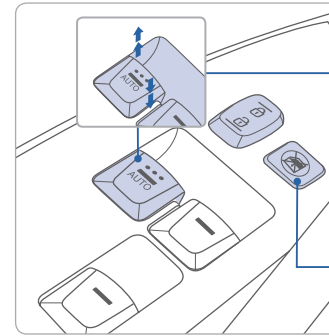
NOTE

After adding fuel, always reinstall the fuel cap onto the filler neck by rotating it clockwise until it clicks once.

Failure to do this may result in the Check Engine Light () illuminating.

Check the engine oil regularly between recommended oil changes.

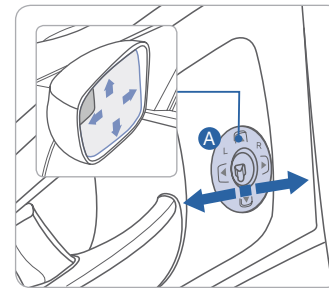
DRIVER'S MAIN CONTROLS



Window Auto down/up (driver's side only)
Press past detent to fully open/close window.




Power Window Lock Switch
Disables the power window switches on the passenger doors.



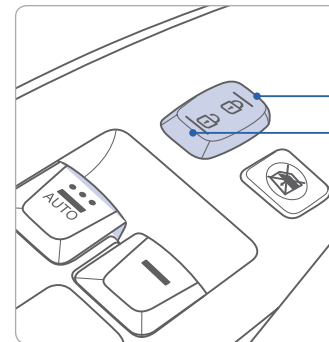
Outside Rearview Mirrors
Move the selecting switch **A** to the right or left for adjusting the outside rearview mirrors.



Depress the appropriate direction () on the switch.

Middle position
Lock the control.

CENTRAL DOOR LOCK SWITCH

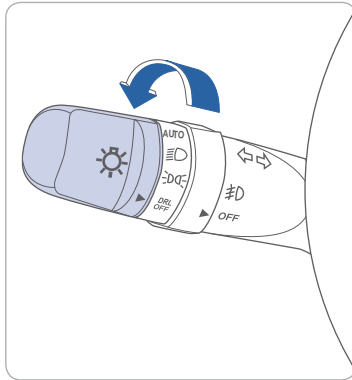


All doors will lock.
All doors will unlock.





HEAD LIGHTS AND FOG LIGHTS

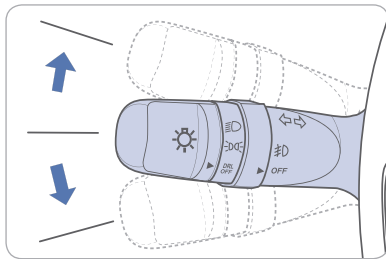


- ▶ **AUTO** Auto light 
- ▶  Head light 
- ▶  Parking light
- ▶ **DRL OFF** DRL OFF

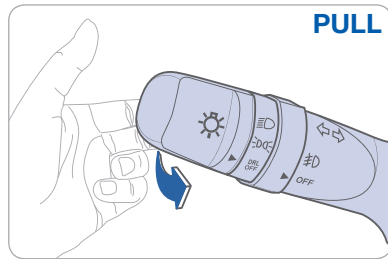
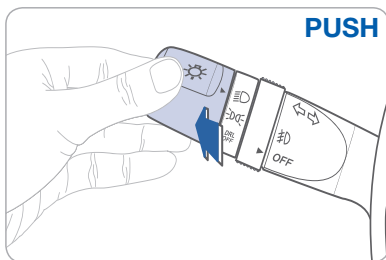
Escort Function

Head lights will stay on for approximately 30 seconds after exiting and locking vehicle. Press remote lock button twice to turn head light off. See Owner's Manual for more detail.

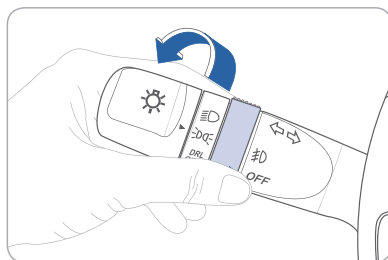
Turn signals and lane change signals Flashing head lights



High beam

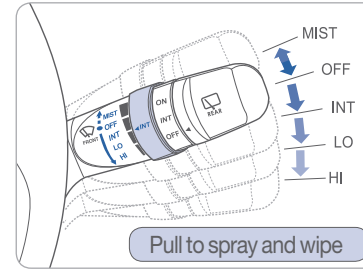


Fog light



WIPER AND WASHER

Front Wiper and Washer



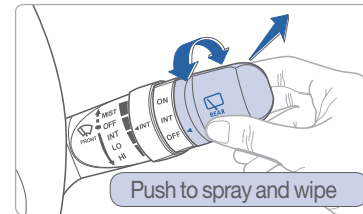
- MIST** - Single wipe
- OFF** - Off
- INT** - Intermittent wipe
- LO** - Normal wiper speed
- HI** - Fast wiper speed



Front Intermittent wipe time adjustment



Rear Wiper and Washer



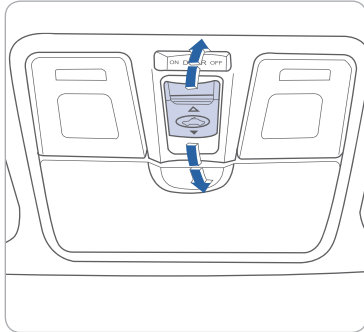
- ON** - Normal wiper operation
- INT** - Intermittent wiper operation
- OFF** - Wiper off



FEATURES AND CONTROLS

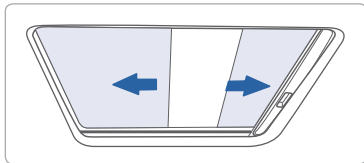
SUNROOF

Sliding the sunroof



To Open

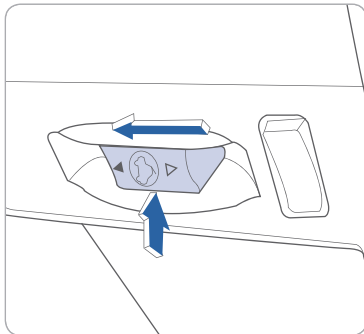
Press switch backward.
Press switch backward past the detent to open completely.



To Close

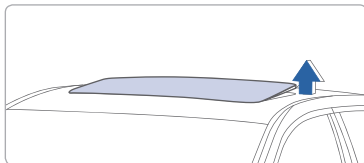
Press switch forward and hold.

Tilting the sunroof



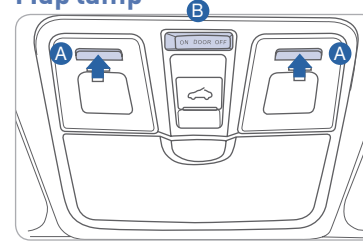
To Tilt

Press or pull switch up or down.



INTERIOR LIGHTS

Map lamp



Push the lens **A** to turn the map lamp on or off.

Switch **B**

ON

Map lamp and room lamp will turn on.

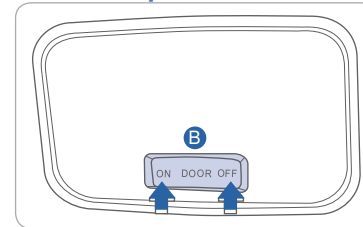
DOOR

Map lamp and room lamp will turn on when any door is open except tailgate.

OFF

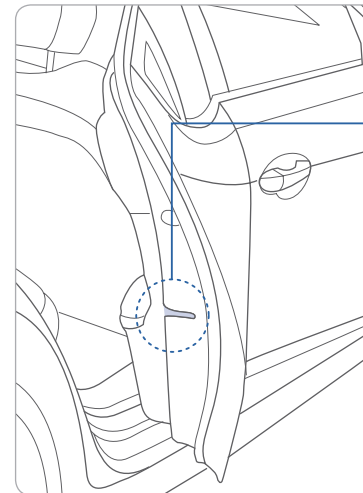
The lights stay off at all times, except when individually turned on.

Room lamp



CHILD-PROTECTOR REAR DOOR LOCK

Allows or prevents opening the rear door from inside of the vehicle.



Lock (🔒)

Insert a key into the hole and turn it to the lock (🔒) position.

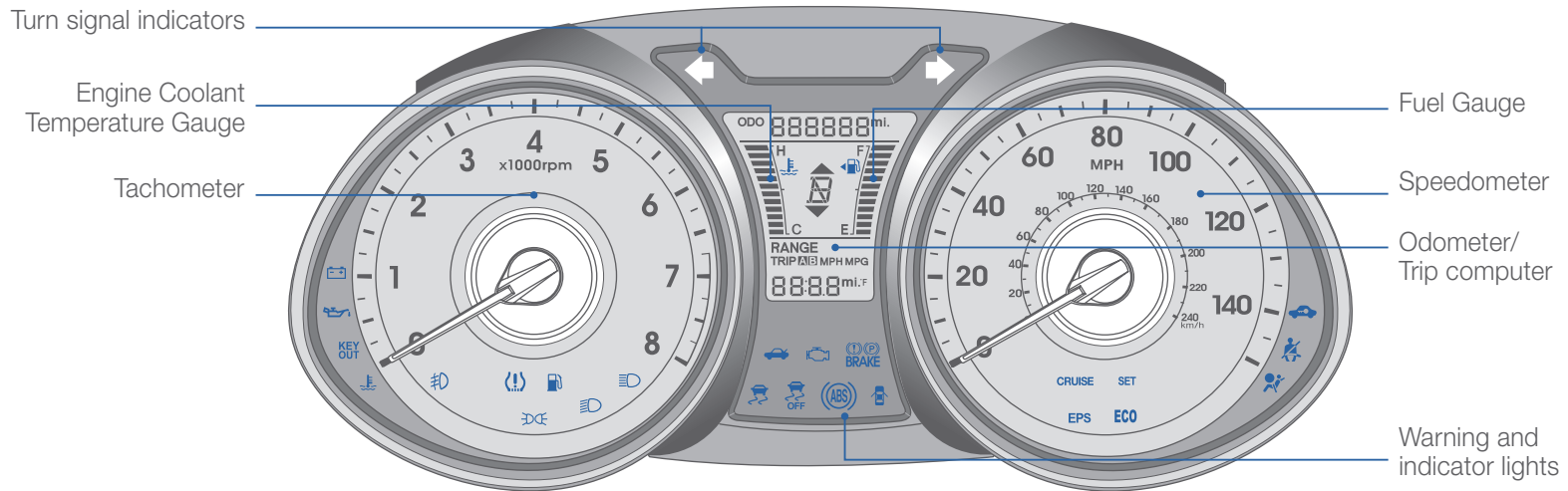


Unlock

Insert a key into the hole and turn it clockwise to the unlock position.



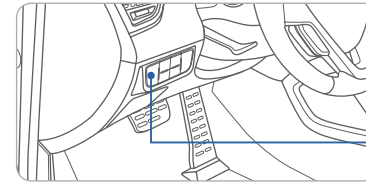
FEATURES AND CONTROLS



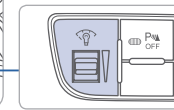
WARNINGS AND INDICATORS

Air bag warning light	Parking brake & Brake fluid warning light	ABS warning light
Seat belt warning light	Low Tire Pressure Indicator / TPMS (Tire Pressure Monitoring System) malfunction indicator	
High beam indicator	Engine oil pressure warning light	Charging system warning light
EPS Electric Power Steering system warning light	Door open warning light	Turn signal indicator
Immobilizer indicator	EcoShift Dual clutch transmission indicator	Manual transmission shift indicator
Tailgate open warning light	Low fuel level warning light	ESC (Electronic Stability Control) indicator
ESC (Electronic Stability Control) OFF indicator	CRUISE Cruise indicator	SET Cruise SET indicator
Malfunction indicator light	Front fog light indicator	ECO Active ECO indicator
Light on indicator	Engine coolant temperature warning light	KEY OUT KEY OUT indicator
Low beam indicator		

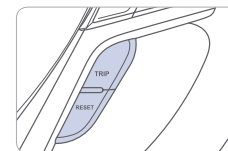
INSTRUMENT PANEL ILLUMINATION



Push the control switch up or down to adjust the brightness

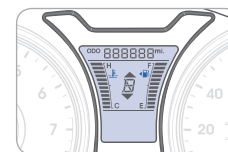


TRIP COMPUTER



Press the TRIP button to select functions as shown below.

Press and hold the RESET button to reset the Tripmeter.



Tripmeter A/B



Range (Miles to Empty)



Average Fuel Economy



Average Speed



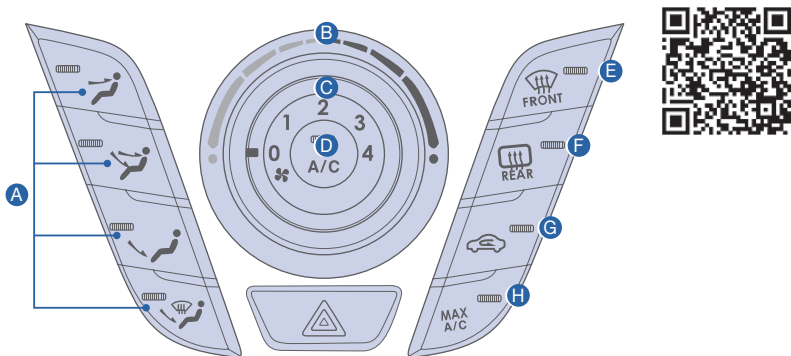
Elapsed Time





FEATURES AND CONTROLS

MANUAL CLIMATE CONTROL

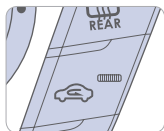


- A** Mode selection buttons
- B** Temperature control knob
- C** Fan speed control knob
- D** Air Conditioning button
- E** Front windshield defrost button
- F** Rear window defroster button
- G** Air intake control button
- H** MAX Air Conditioning button

MODE SELECTION

- Face Level
- Bi Level
- Floor Level
- Floor Defrost Level

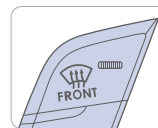
AIR INTAKE CONTROL



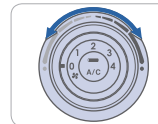
This is used to select outside (fresh) air position or recirculated air position.

- Outside (fresh) air position
- Recirculated air position

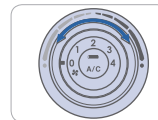
DEFROSTING / DEFOGGING



1. Press the front windshield defrost control.



2. Set the temperature control to the warmest setting.

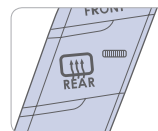


3. Set the fan speed to the highest setting.

NOTE

To reduce the tendency of the glass fogging and improve visibility, keep the interior surface of the windshield clean by wiping it with a clean cloth and glass cleaner.

REAR WINDOW DEFROSTER

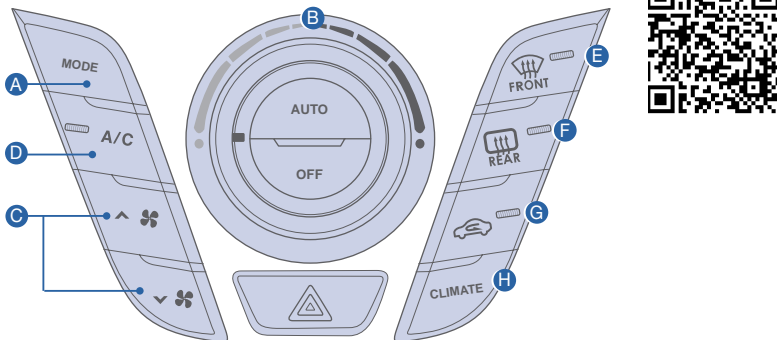


Press to activate / deactivate the rear defroster.



FEATURES AND CONTROLS

AUTOMATIC CLIMATE CONTROL



- A** Mode selection button
- B** Temperature control knob
- C** Fan speed control buttons
- D** Air Conditioning button
- E** Front windshield defrost button
- F** Rear window defroster button
- G** Air intake control button
- H** Climate button

MODE SELECTION

- Face Level
- Bi Level
- Floor Level
- Floor Defrost Level

AIR INTAKE CONTROL



This is used to select outside (fresh) air position or recirculated air position.

- Outside (fresh) air position
- Recirculated air position

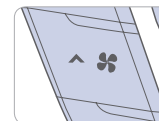
DEFROSTING / DEFOGGING



1. Press the front windshield defrost control.



2. Set the temperature control to the warmest setting.

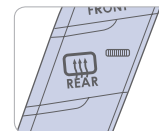


3. Set the fan speed to the highest setting.

NOTE

To reduce the tendency of the glass fogging and improve visibility, keep the interior surface of the windshield clean by wiping it with a clean cloth and glass cleaner.

REAR WINDOW DEFROSTER



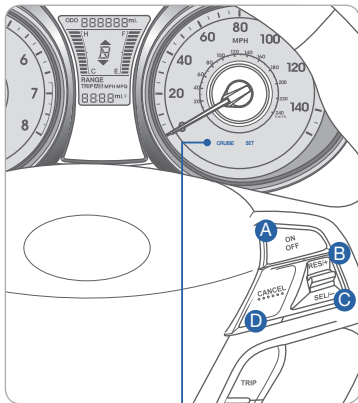
Press to activate / deactivate the rear defroster.



FEATURES AND CONTROLS

STEERING WHEEL CONTROLS

Cruise control system



To set a cruising speed

1. Press ON/OFF button **A** and the CRUISE indicator will illuminate in the instrument cluster.
2. Accelerate to desired cruising speed (above 25 mph). Press SET-button **C** and remove your foot from the accelerator pedal.

To accelerate or decelerate

Press RES + button **B** up to increase set cruising speed.

Press SET - button **C** down to decrease set cruising speed.

To cancel cruising speed

Press CANCEL button **D**, depress brake pedal, or press ON/OFF button **A**.

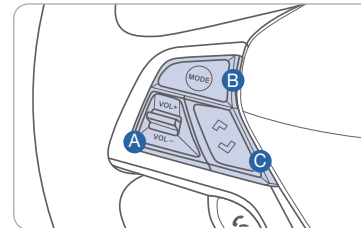
CRUISE

Cruise indicator

SET

Cruise set indicator

Audio control



A VOLUME

Raise or lower speaker volume.

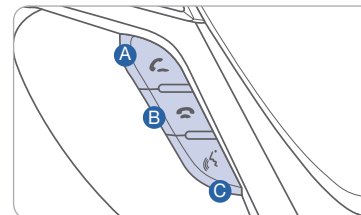
B MODE

Change the audio source.
Hold to turn Audio power ON/OFF.

C SEEK/PRESET

Press to change presets.
Press and hold to seek stations.

Bluetooth control



A CALL

Place and transfer call.

B END

End call or cancel function.

C TALK

Activate voice recognition.

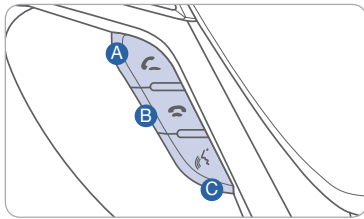


BLUETOOTH OPERATIONAL TIPS

In the following situations you or the other party may have difficulty hearing each other:

1. When the Bluetooth volume is at a high level. Keep the Bluetooth volume to a low level to reduce distortion and echo.
2. When driving on a rough road, high speeds and/or with the window open.
3. When the air conditioning vents are facing the microphone and/or when the air conditioning fan is at the max speed.

Bluetooth control



- A CALL**
Place and transfer call.
- B END**
End call or cancel function.
- C TALK**
Activate voice recognition.

To Answer a Call:

- Press button on the steering wheel.

To Reject a Call:

- Press button on the steering wheel.

To Adjust Ring Volume:

- Use the VOLUME buttons on the steering wheel.

To Transfer a Call to the Phone

(Secret Call):

- Press and hold button on the steering wheel until the audio system transfers a call to the phone.

To Finish a Call:

- Press button on the steering wheel.

Making a call using voice recognition:

The menu tree identifies available voice recognition Bluetooth® functions.

Calling by Name:

1. Press button.
2. Say the following command:
 - “Call <John>”: Connects the call to John.
 - “Call <John> on <Mobile/Home/Office>”: Connects the call to John’s Mobile, Home, or Office phone number.

Dialing by Number:

1. Press button.
2. Say “Call”.
3. Say “By number” when prompted.
4. Say desired phone numbers.
5. Say “Dial” to complete the number and make a call.

For complete list of commands, refer to your Owner’s Manual.

VOICE RECOGNITION TIPS

Your vehicle is equipped with Voice Recognition technology which allows drivers to operate their phones without having to take their eyes off the road to minimize distractions.

Voice recognition performance may be affected if driving with windows and sun roof open; when the heating-cooling system is on; when passing in a tunnel or when driving on rugged and uneven roads.

Quick reference on using voice commands

To start voice command. Press the key, the following commands are available:

Command	Function
More Help	Provides guidance on commands that can be used anywhere in the system
Help	Provides guidance on commands that can be used within the current mode.
Calls <Name>	Calls <Name> saved in Contacts. Ex) Call “John”
Dial <Number>	Call can be made by dialing the spoken numbers. Ex) Call “123”
Phone	Provides guidance on Phone related commands. After saying this command, say “Call History”, “Contacts” to execute corresponding functions.
Call History	Displays the Call History screen.
Contacts (Call by Name)	Displays the Contacts screen. After saying this command, say the name of a contact saved in the Contacts to automatically connect the cell.
Dial Number	Display the Dial number screen. After saying this command, you can say the number what you want to call.



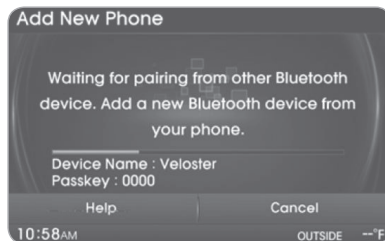
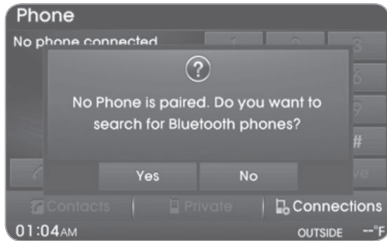
BLUETOOTH PHONE PAIRING

Pairing tutorials, phone compatibility and Operational tips can be found through the Smart QR code using the QR reader application on your Smartphone.



Phone setup (pairing phone)

1. Press PHONE button on the radio or on the steering wheel remote control.
2. Touch “Yes” to search for Bluetooth phones.

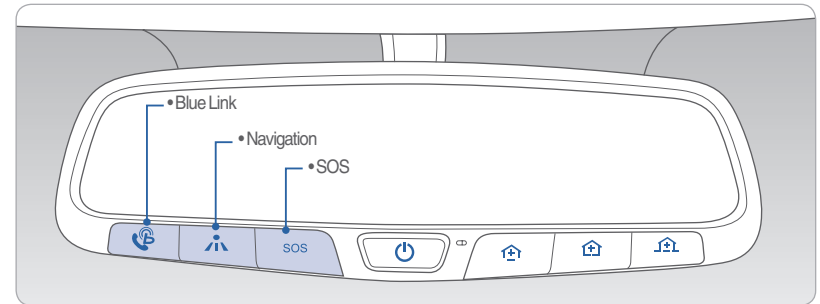


3. In your phone, initiate a search for Bluetooth devices.
4. After search is completed in your phone, select “Veloster”.
5. Input the passkey displayed on screen to your phone.



Please visit www.hyundaiusa.com/Bluetooth for a list of compatible phones tested to work with Hyundai's Bluetooth® system.

BLUE LINK TELEMATIC SYSTEM



Press the button for access to the voice-response menu of services. You have two options:

- You can say, “Main Menu” for a listing of main menu choices.
- You can directly select any of the listed menu items by saying its name.



In-Car Voice Response Commands

New Destination
 Service Link
 Roadside Assistance
 Valet Alert
 Help
 Cancel

- Press the button for navigation-related services.
- Press the button for SOS Emergency Assistance.
- Refer to your Blue Link User's Manual for detailed information on system operation.
- For immediate assistance with subscription services, please call 1-855-2BLUELINK (1-855-225-8354).
- Please register your Blue Link at www.myhyundai.com.

Blue Link feature availability is dependent upon your Blue Link subscription package(s).



Remote Door Unlock/Lock

Blue Link Mobile App



You can download the Blue Link mobile app to your compatible smart phone from the following sites:

- iPhone® – Apple® App Store
- Android® – Google Play

With this feature, you can lock or unlock your vehicle doors from virtually anywhere by using the Blue Link mobile phone app, by dialing the toll-free number, or by using the Blue Link owner's website.

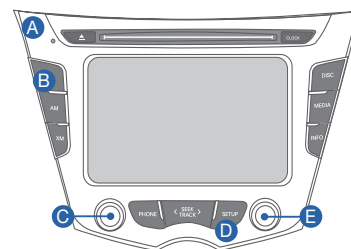
- To use this feature, you must have a Blue Link Personal Identification Number (PIN). To create or change your PIN, log on to www.MyHyundai.com.

To Activate Remote Door Unlock/Lock

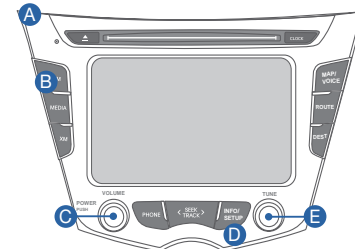
- By Blue Link Mobile App: Select DOOR UNLOCK or DOOR LOCK, as desired.
 - Enter your Blue Link PIN.
 - The command to lock or unlock your doors will be sent to your vehicle.
- By phone: Dial toll-free 1-855-2-BLUELINK (1-855-225-8354).
- By web site: Log on to www.MyHyundai.com, select Blue Link.
 - Select Remote Services, then Remote Door Unlock/Lock.
 - Input your Blue Link PIN. (If you need time to get to your vehicle, specify a time delay before your vehicle will be unlocked.)

AUDIO

Non-Navigation



Navigation



Press POWER button **C** to turn radio on.

- TUNING/LISTENING TO CHANNELS
 1. Press FM/AM **A** or XM® **B**.
 2. Rotate TUNE **E** to desired channel.

NOTE

A clear view of the southern sky is recommended to ensure XM® radio reception.

- SETTING PRESET BUTTONS

Six preset frequencies each for FM1/FM2/AM modes can be stored manually.

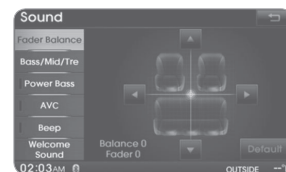
1. Select the band (FM1, FM2, AM) you want to store a station into.
2. Select the desired station.
3. Touch and hold one of the preset buttons until audible beep is heard.



- ADJUSTING THE SOUND

1. Press SETUP **D**.
2. Touch "Sound" on screen.

- Touch the arrows on screen to adjust desired sound setting.



Please refer to your Owner's Manual for more detailed information on how to use your audio system. Complimentary XM® subscription ends three months following the vehicle date of sale. Please contact XM® Radio at 1-800-XM-RADIO (1-800-967-2346) to renew your XM® subscription.



MULTIMEDIA

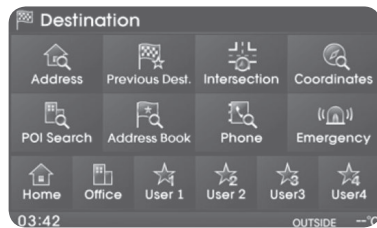


NAVIGATION

Map position

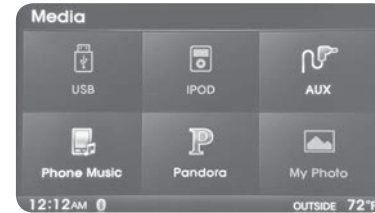


Destination menu



- Address: Finds a destination by setting an address.
- Previous Destinations: Destination you have previously entered.
- POI (Point of Interest) Search: Search for a destination category or name.
- Emergency: Finds a destination by searching for a police station, hospital or Hyundai dealership.

Playing Pandora

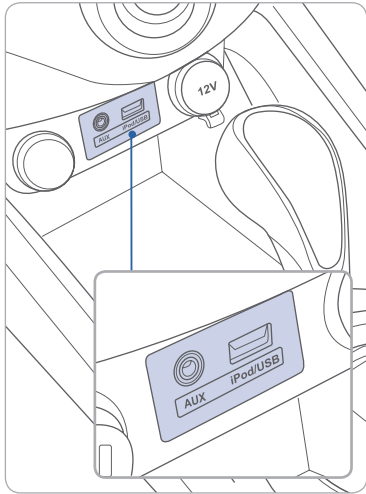


1. Ensure you have Pandora app on your smart phone.
2. Pair your smart phone to the Bluetooth system.
3. Select "Media" on Audio screen.
4. Select "Pandora".
5. Initiate Pandora app on your smartphone.

NOTE Not all smart phones are compatible



AUX, USB AND iPod® PORT



iPod® is a trademark of Apple Inc.



Use these jacks to connect an external USB, audio or video device. To view compatible video, connect the device to the supplied Hyundai RCA adapter video cable. Then connect the RCA adapter cable to the AUX jack.

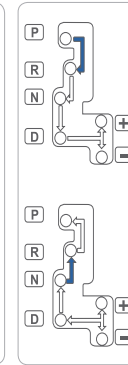
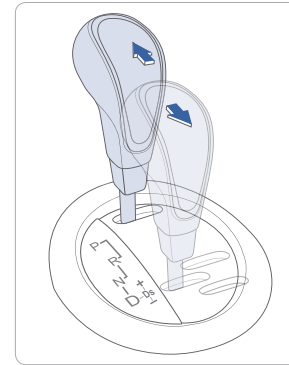
NOTE

To operate your iPod® through the vehicle's audio system, connect your Apple supplied USB cable to the USB port.



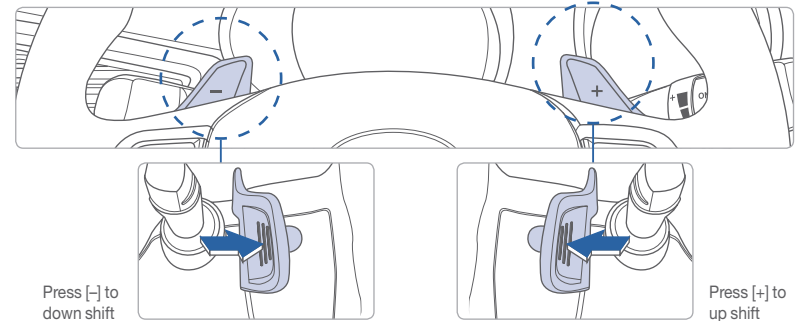
TRANSMISSIONS

Automatic Transmission



- (➡) : Depress the brake pedal when shifting.
- (⇐) : The shift lever can be shifted freely.
- P** : Park
- R** : Reverse
- N** : Neutral
- D** : Drive
- Ds** : Sport Mode
- [+]** : Shiftronic Upshift
- [-]** : Shiftronic Downshift

Paddle shifters



The paddle shifters operate when the shift lever is in the D position or the Sport Mode.

- When you pull the [+] or [-] paddle shifter once, the system changes from automatic mode to Shiftronic.
- When paddle shifters are no longer used the system changes back to automatic mode.

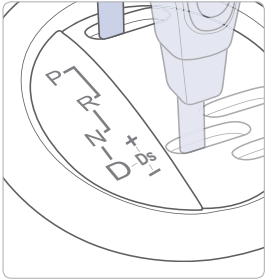
NOTE

If you pull the [+] and [-] paddle shifters at the same time, the transmission will not change gears.



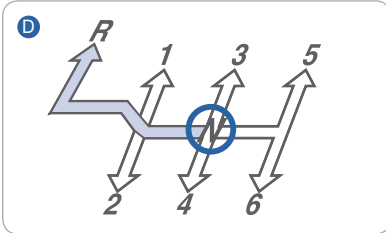
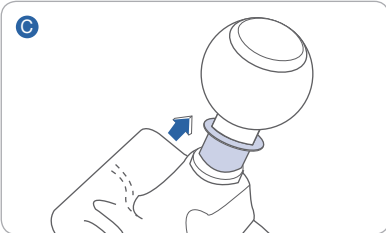
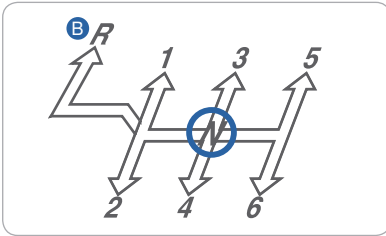
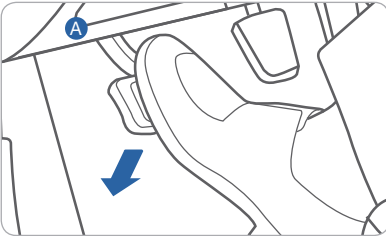
FEATURES AND CONTROLS

Sport Mode



Shift lever from D to DS to activate Sport mode. Sport mode is a recalibrated automatic mode that will hold gears longer and downshift at higher RPM for a more dynamic driving style. If you use the paddle shifters (or [+] or [-]) to enter the Sport Mode, you will stay in Sport Mode until the shift lever is returned to Drive, giving you full manual control.

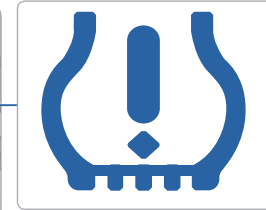
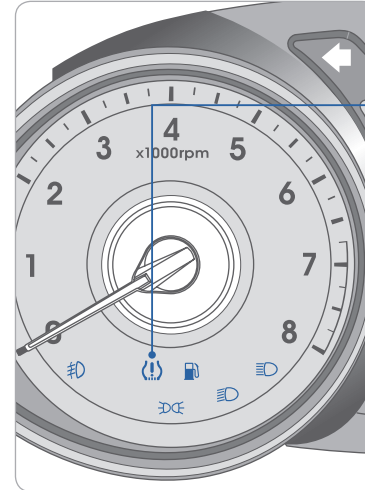
Manual Transmission



Shifting into Reverse

1. Fully depress the clutch **A**
2. Shift into Neutral **B**
3. Lift up on the reverse lock out ring **C**.
4. Shift into Reverse **D**

TIRE PRESSURE MONITORING SYSTEM (TPMS)



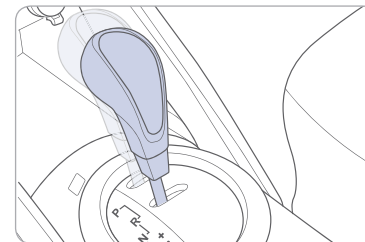
Low tire pressure indicator / TPMS malfunction indicator

Low Tire Pressure Indicator
Illuminates if one or more of your tires is significantly under-inflated.

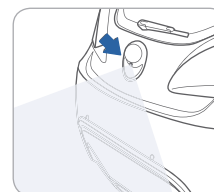
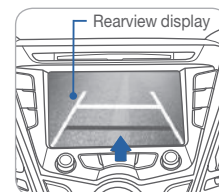
TPMS Malfunction Indicator

Blinks for approximately one minute then remains illuminated when there is a malfunction with the TPMS system. Have the system checked by an authorized Hyundai dealer.

REARVIEW CAMERA



The rearview camera will activate when the ignition switch is ON and the shift lever is in the R (Reverse) position.





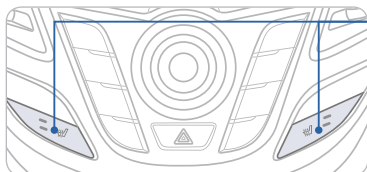
CLOCK ADJUSTMENT

Time Setup

1. Press and hold CLOCK **A**.
2. Touch ▲ or ▼ to set the clock.
3. Touch “Done” when finished.



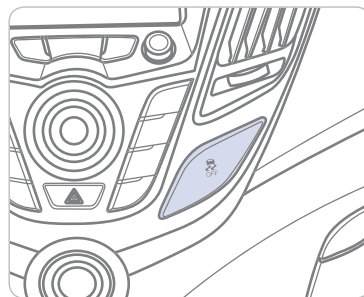
SEAT WARMER



Push desired switch to warm the seat.



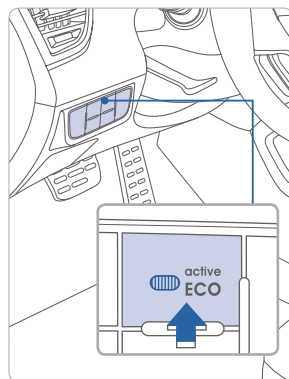
ELECTRONIC STABILITY CONTROL (ESC)



The ESC system is an electronic system designed to help the driver maintain vehicle control under adverse conditions.

Press to turn ESC on or off.

ACTIVE ECO SYSTEM



Active ECO System helps improve fuel efficiency by controlling the engine and transmission.

Active ECO on - For optimal fuel efficiency

Active ECO off - For optimal performance and drivability.

When Active ECO system is activated, the behavior of the vehicle will change to a suppressed acceleration and delayed gear shifts under part throttle operation.

To improve your fuel efficiency:

- Accelerate at a moderate rate
- Keep tires inflated to the recommended pressure on the placard
- Be sure the wheels are properly aligned
- Avoid unnecessary braking
- Drive between 55-65 mph on the freeway

Key Websites

- Hyundai website - www.hyundai.com
- Hyundai owner website - www.myhyundai.com
- Bluetooth phone compatibility - www.hyundaiusa.com/bluetooth
- Blue Link - www.hyundaiusa.com/technology/bluelink

VELOSTER TURBO CUSTOMER DELIVERY CHECK LIST

HYUNDAI OWNER	DEALERSHIP NAME
SALES CONSULTANT	DATE
VIN	PREVIOUS VEHICLE

BEFORE DELIVERY

- CONFIRM “GOOD BATTERY” USING GR8 AND STAPLE TEST TICKET HERE
- SET TIRE PRESURE LF___ RF___ RR___ LR___
- VERIFY VEHICLE IS CLEAN, IN GOOD CONDITION, FREE OF CHIPS AND SCRATCHES · CLEAN WINDSHIELD AND BACK WINDOW
- ENSURE FLOORMATS ARE SNAPPED INTO PLACE

Sales Consultant	Date	Sales Manager	Date
Customer		@	Date
Email			