

**WALK THE CUSTOMER THROUGH EACH OF THE FOLLOWING KEY DELIVERY FEATURES**

☐ DEFROST - page 17&19

- 1 Press the front defrost button.
- 2 Set to warmest temperature setting.
- 3 Set to highest fan speed.



☐ TIRE PRESSURE MONITORING SYSTEM (TPMS) – page 34

Explain TPMS function to customer.

- When illuminated, one or more tires are under-inflated.
- Blinks for approximately one minute then remains illuminated when there is a malfunction with the TPMS.



☐ CLOCK ADJUSTMENT – page 32

- Demonstrate how to adjust the clock.

☐ VEHICLE SETTINGS – pages 12-15 & 28-31

- Demonstrate vehicle settings in instrument cluster
- Demonstrate navigation use, enter dealer address
- Show radio presets

☐ BLUETOOTH – pages 22-23

- Demonstrate phone pairing
- Refer to [www.hyundaiusa.com/bluetooth](http://www.hyundaiusa.com/bluetooth)
- Demonstrate QR code



☐ BLUE LINK – pages 26-27 (if applicable)

- Assist with creating MyHyundai.com account
- Assist with Blue Link enrollment
- Show Blue Link Users Manual & tear out Voice Commands/Quick Tip Card
- Encourage customers to press the Blue link button after enrollment to initiate Welcome Call

**MAINTENANCE**

Scheduled Maintenance	Normal Usage		Severe Usage*	
Engine Oil And Filter	Replace	7,500 or 12 mos.	Replace	3,750 or 6 mos.
Fuel Additives	Add	7,500 or 12 mos.		
Tire Rotation	Perform	7,500	Perform	7,500
Air Cleaner Filter	Inspect Replace	7,500 30,000	Inspect Replace	Same As Normal More Frequently
Battery Condition	Inspect	7,500	Inspect	Same As Normal
Vacuum Hose	Inspect	7,500	Inspect	Same As Normal
Climate Control Air Filter (For Evaporator And Blower Unit)	Replace	15,000	Replace	More Frequently
Air Conditioning Refrigerant	Inspect	15,000	Inspect	Same As Normal
Brake Hoses & Lines	Inspect	15,000	Inspect	Same As Normal
Drive Shafts & Boots	Inspect	15,000	Inspect	7,500 or 6 mos.
Exhaust Pipe & Muffler	Inspect	15,000	Inspect	Same As Normal
Front Disc Brake/Pads	Inspect	15,000	Inspect	More Frequently
Rear Brake Disc/Pads	Inspect	15,000	Inspect	More Frequently
Steering Gear Box, Linkage & Boots/ Lower Arm Ball Joint, Upper Arm Ball Joint	Inspect	15,000	Inspect	More Frequently
Suspension Mounting Bolts	Inspect	15,000	Inspect	Same As Normal
Brake Fluid	Inspect	30,000	Inspect	Same As Normal
Fuel Filter	Inspect	30,000	Inspect	Same As Normal
Fuel Lines, Fuel Hoses and Connections	Inspect	30,000	Inspect	Same As Normal
Fuel Tank Air Filter	Inspect	30,000	Inspect	Same As Normal
Parking Brake	Inspect	30,000	Inspect	More Frequently
Vapor Hose & Fuel Filler Cap	Inspect	30,000	Inspect	Same As Normal
Valve Clearance	Inspect	60,000	Inspect	Same As Normal
Drive Belt (Alt, A/C)	1st Inspect 60,000 or 72 mos. Add. Inspect 15,000 or 24 mos.		Inspect	Same As Normal
Spark Plugs (Iridium Coated)	Replace	105,000 or 10 yrs.	Replace	More Frequently
Coolant	1st Replace 120,000 or 10 yrs. Add Replace 30,000 or 24 mos.		Replace	Same As Normal
Automatic Transaxle Fluid	No check, No service required		Replace	60,000

\*See Owner's Manual for details.

Looking for more detailed information? This Quick Reference Guide does not replace your vehicle's Owner's Manual. If you require additional information or are unsure of a specific issue, you should always refer to the vehicle's Owner's Manual or contact your authorized Hyundai dealer.

The information contained in this Quick Reference Guide was correct at the time of printing, however, specifications and equipment can change without notice. No warranty or guarantee is being extended in this Quick Reference Guide, and Hyundai reserves the right to change product specifications and equipment at any time without incurring obligations. Some vehicles are shown with optional equipment. Specifications apply to U.S. vehicles only. Please contact your Hyundai dealer for current vehicle specifications.

NP150-M2014-A  
(Rev 12/23/13)  
Printing 12/26/13

**HYUNDAI AZERA**  
Quick Reference Guide

[www.hyundai.com](http://www.hyundai.com)

**HYUNDAI**  
NEW THINKING.  
NEW POSSIBILITIES.

Roadside Assistance: **1-800-243-7766**  
 Consumer Affairs: **1-800-633-5151**  
 XM® Radio: **1-800-967-2346**  
 Blue Link: **1-855-2BLUELINK**  
**(1-855-225-8354)**

# Table of contents

## GETTING STARTED

Engine start/stop button	03
Front seat adjustment	04
Fuel door	05
Headrest adjustment	04
Rear seat folding	05
Remote keyless entry	02
Seat belt adjustments	05
Trunk opening	03

## FEATURES AND CONTROLS

Active ECO System	35
Central door lock switch	07
Child-protector rear door lock	36
Climate control	16-19
Clock adjustment	32
Cruise control system	20
Driver's main controls	07
Electronic Stability Control (ESC)	35
Head lights and fog lights	08
Homelink wireless control system	11
Instrument cluster	12-15
Instrument panel illumination	13&15
Interior lights	11
Rearview camera	36
Steering wheel adjustments	06
Steering wheel controls	20-21
Sunroof	10
Tire Pressure Monitoring System (TPMS)	34
Transmission	33
Trip computer	13&15
Wiper and washer	09

## MULTIMEDIA

Audio	28
AUX, USB, and iPod® Port	32
Blue Link Telematics system	26-27
Bluetooth operation tips	24-25
Bluetooth phone pairing	22-23
Navigation	29-31
Voice recognition tips	25

### How to:

1. Pair phone to your vehicle. Refer to page 22.
2. Get started with Blue Link. Refer to page 26-27.

Steering Wheel Adjustments Page 06

Instrument cluster Pages 12-15

Cruise control system Page 20

Wiper and washer Page 09

Audio Pages 28-31

Navigation Pages 28-31

Head lights and fog lights Page 08

Trip computer Page 13&15

Engine start/stop button Page 03

Automatic transmission Page 33

Climate control Pages 16-19

\* Some vehicles may not be equipped with all the listed features.

Use this Quick Reference Guide to learn about the features that will enhance your enjoyment of your Hyundai. More detailed information about these features are available in your Owner's Manual.

### ⚠ WARNING!

To reduce the risk of serious injury to yourself and others, read and understand the important SAFETY INFORMATION in your Owner's Manual.



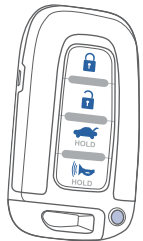
## GETTING STARTED





### Download QR Code Reader

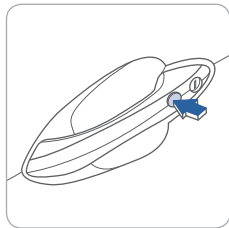
You can download a QR reader app to your smart phone to take advantage of the QR codes throughout this Quick Reference Guide.

iPhone® - Apple® App Store  
Android® - Google Play  
BlackBerry® - BlackBerry® App World

### REMOTE KEYLESS ENTRY



-  Lock
-  Unlock
-  Trunk open
-  Alarm

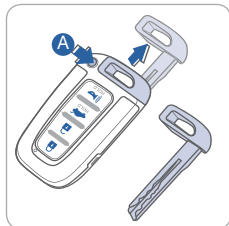


**Driver's door Lock / Unlock**  
Smart key must be within range.

**Press:**

- Once – Unlock driver door
- Twice – Unlock all doors
- Third – Lock all doors

**NOTE:** You can activate or deactivate the Two Turn Unlock features in the vehicle. Refer to “LCD display” in the Owner’s Manual section 4.



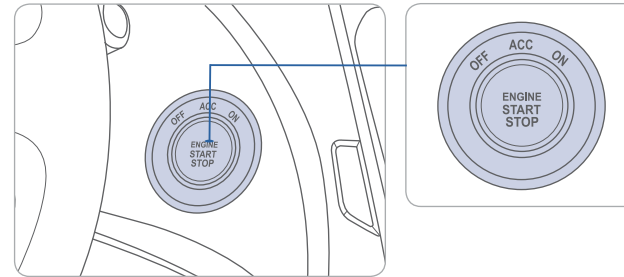
**Remove mechanical key**

Press and hold the release **A** button and remove the key.

**Reinstall mechanical key**

Put the key into the key slot and push it until a click sound is heard.

### ENGINE START/STOP BUTTON



**With the ignition OFF, press the engine start/stop button:**

- Once for ACC (Accessory) mode.
- Twice for ON mode.
- Three times for OFF.

**To start the engine, press the start/stop button while:**

- Depressing the brake pedal.

**To shut engine OFF, shift to:**

- P (Park) and press the engine start/stop button.

### Emergency situations

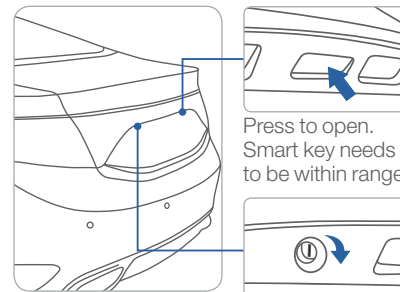
**Shut off engine while driving:**

Press engine start/stop button for more than 2 seconds or press it 3 times consecutively within 3 seconds.

**Restart engine while driving:**

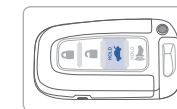
Press engine start/stop button with shift lever in N (Neutral).

### TRUNK OPENING

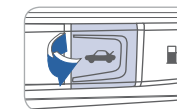


Press to open. Smart key needs to be within range.

Insert key and turn.

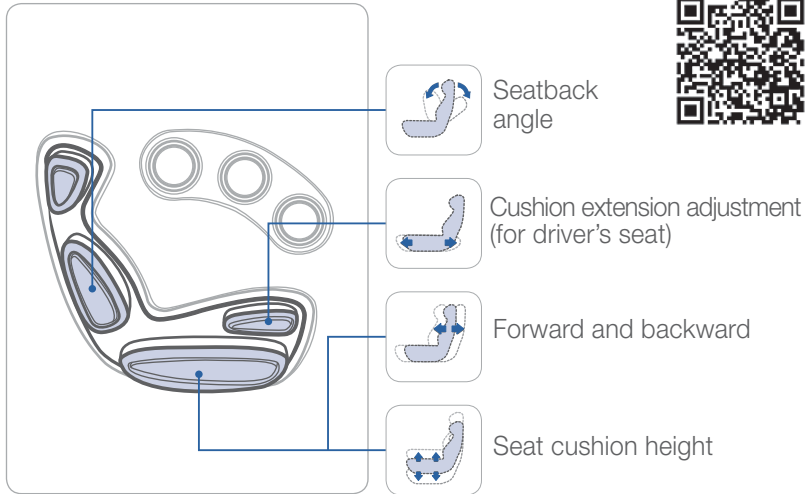


Press and hold to open.

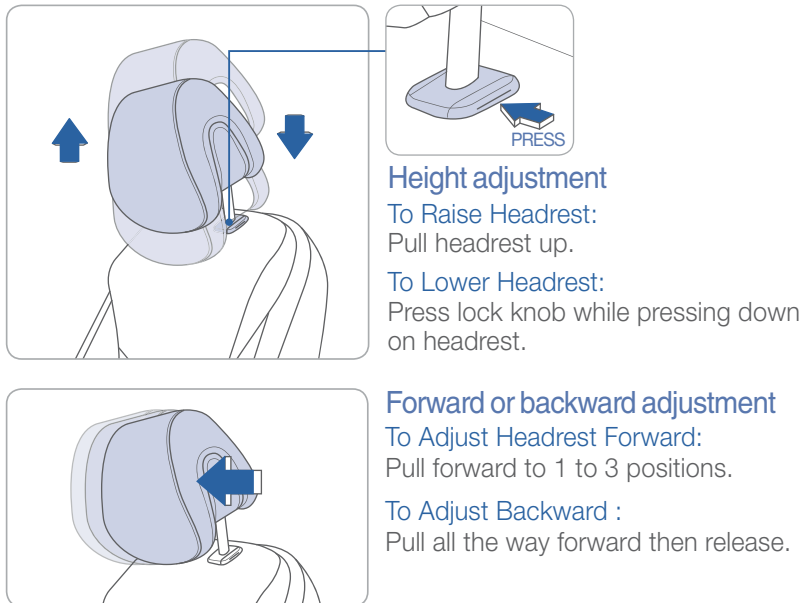


Pull the release button in the vehicle.

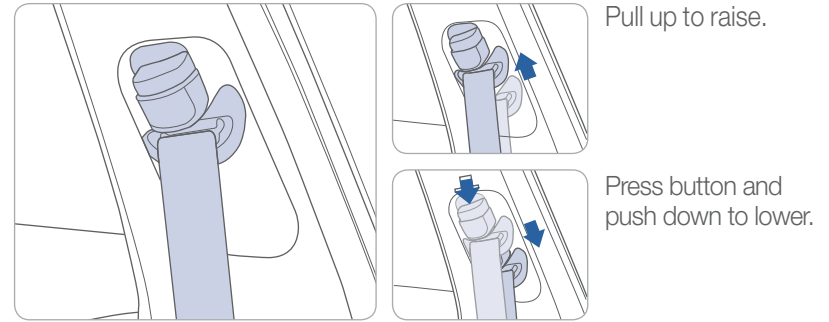
## FRONT SEAT ADJUSTMENT



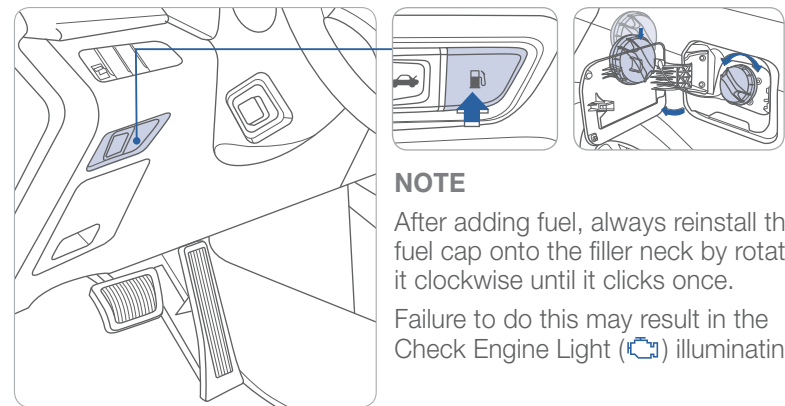
## HEADREST ADJUSTMENT



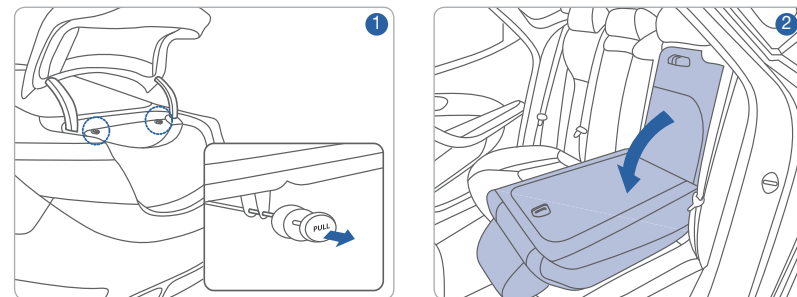
## SEAT BELT ADJUSTMENT (Front seat)



## FUEL DOOR



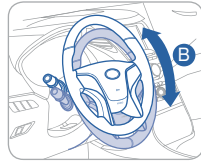
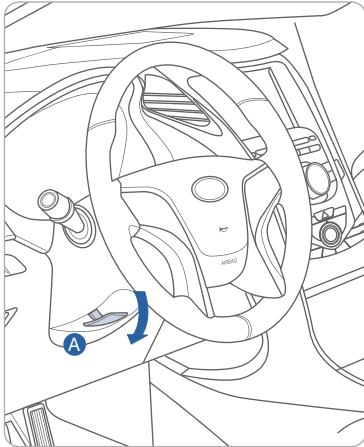
## REAR SEAT FOLDING



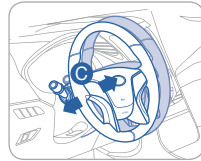


## STEERING WHEEL ADJUSTMENTS

### Manual Tilt



Tilt

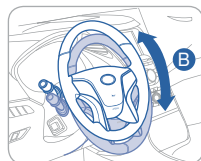
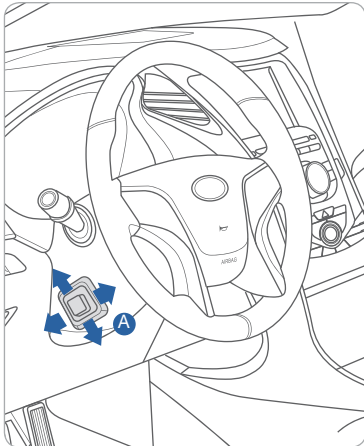


Telescopic

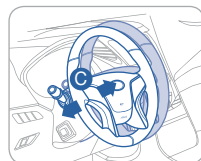
Do not adjust while driving.

1. Pull the lever **A** down to release.
2. Set the angle **B** and distance **C**
3. Pull the lever **A** up to lock.

### Power Tilt and Telescopic



Tilt

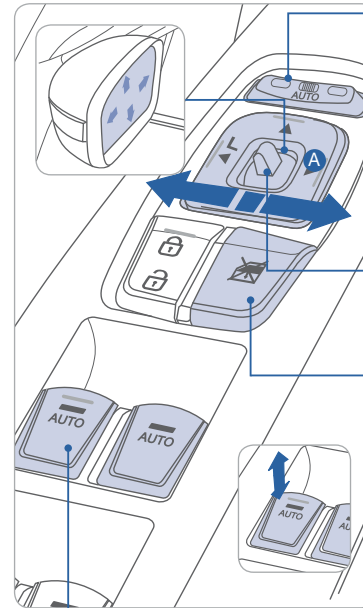


Telescopic

**NOTE:** Do not adjust while driving.

Set the angle **B** and distance **C** with the switch **A**.

## DRIVER'S MAIN CONTROLS



### Power Folding Mirrors

Left - The mirror will unfold

Center - The mirror will fold or unfold automatically when door is locked or unlocked by the smart key or the button on the outside of door handle

Right - The mirror will fold

### Outside Rearview Mirrors

Move the selecting switch **A** to the right or left.

Press the appropriate direction

() on the switch.

### Middle position

Lock the control.

### Power Window Lock Switch

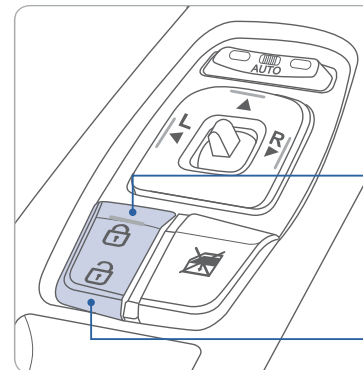
Disables the power window switches on the passenger doors.

### Window Auto down/up

Press past detent to fully open/close window.



## CENTRAL DOOR LOCK SWITCH

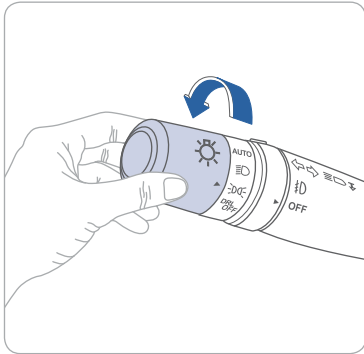


All doors will lock.

All doors will unlock.

## FEATURES AND CONTROLS

### HEAD LIGHTS AND FOG LIGHTS

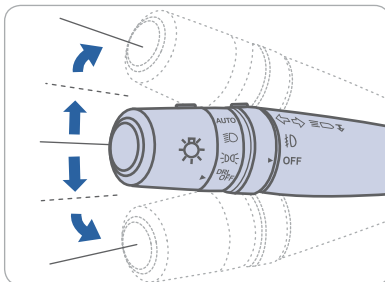


- ▶ | **AUTO** | Auto light
- ▶ | | Head light
- ▶ | | Parking light
- ▶ | **DRL OFF** | OFF

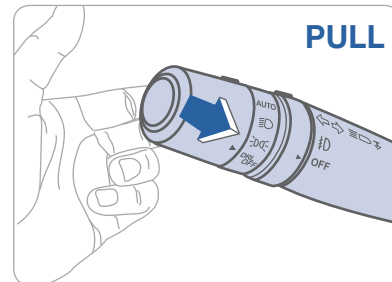
#### Escort Function

Head lights will stay on for approximately 30 seconds after exiting and locking vehicle. Press the remote lock button twice to turn the head light off. See the Owner's Manual for more detail.

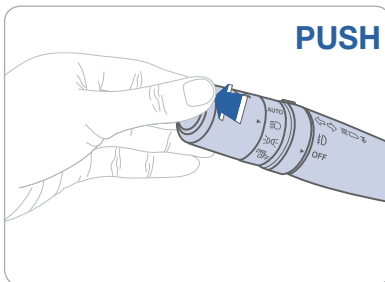
#### Turn signals and lane change signals



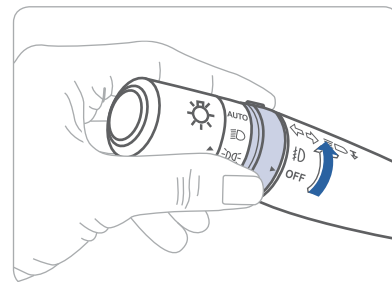
#### Flashing head lights



#### High beam

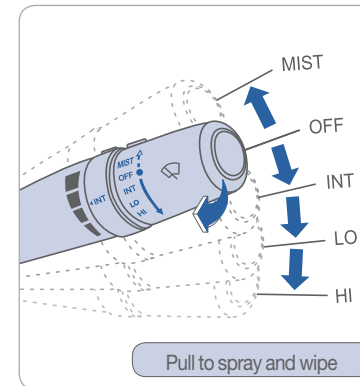


#### Fog light

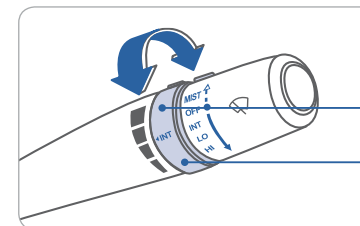


### WIPER AND WASHER

#### Front Wiper and Washer

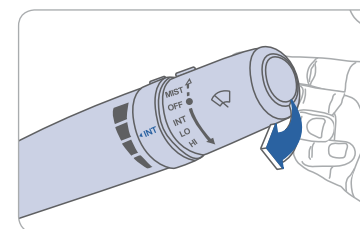


- MIST** - Single wipe
- OFF** - Off
- INT** - Intermittent wipe
- LO** - Normal wiper speed
- HI** - Fast wiper speed



#### Front Intermittent wipe time adjustment

- Fast wiper speed
- Slow wiper speed



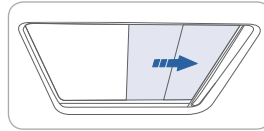
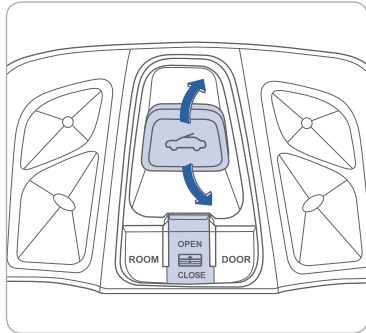
#### Wash with brief wipes



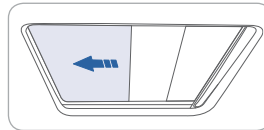
## FEATURES AND CONTROLS

### SUNROOF

#### Sliding the sunroof



**To Open**  
Press switch rearward.  
Press switch rearward past the detent to open completely.

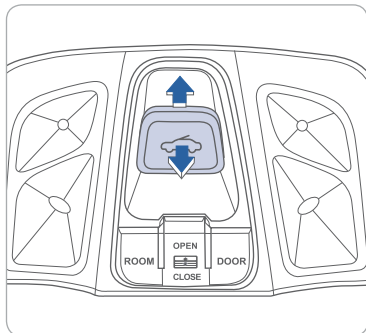


**To Close**  
Press switch forward past the detent to close completely.

#### NOTE

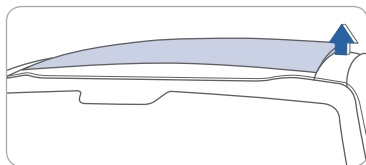
To slide the sunshade, press open or close button.

#### Tilting the sunroof



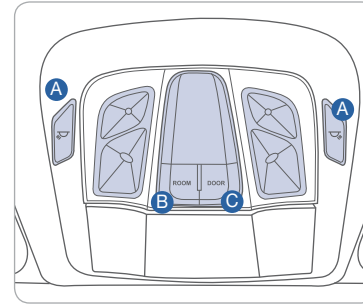
**To Tilt**  
Press the switch up.

**To close**  
Push the switch forward or pull the switch down.



### INTERIOR LIGHTS

#### Map lamp

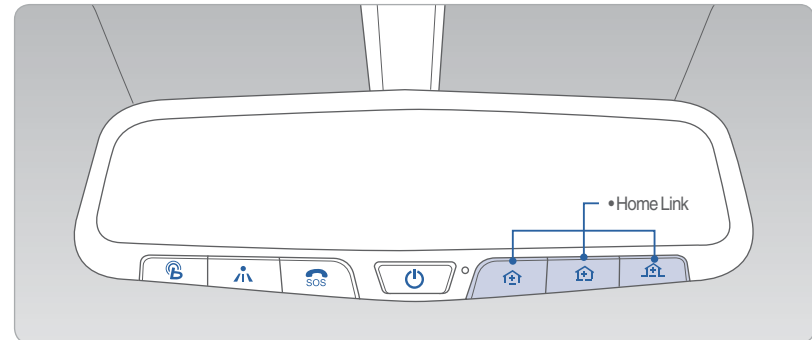


Push the switch **A** to turn the map lamp on or off.

**ROOM B**  
Map lamp and room lamp will turn on.

**DOOR C**  
Map lamp and room lamp will turn on when any door is open except trunk.

### HOMELINK WIRELESS CONTROL SYSTEM



#### Programming Rolling Code Garage

Press and hold your selected HomeLink button for 20 seconds. Release when light flashes rapidly.

Press and release the “learn” or “smart” button on the garage door opener motor-head unit.

**NOTE:** 30 second window to initiate next step

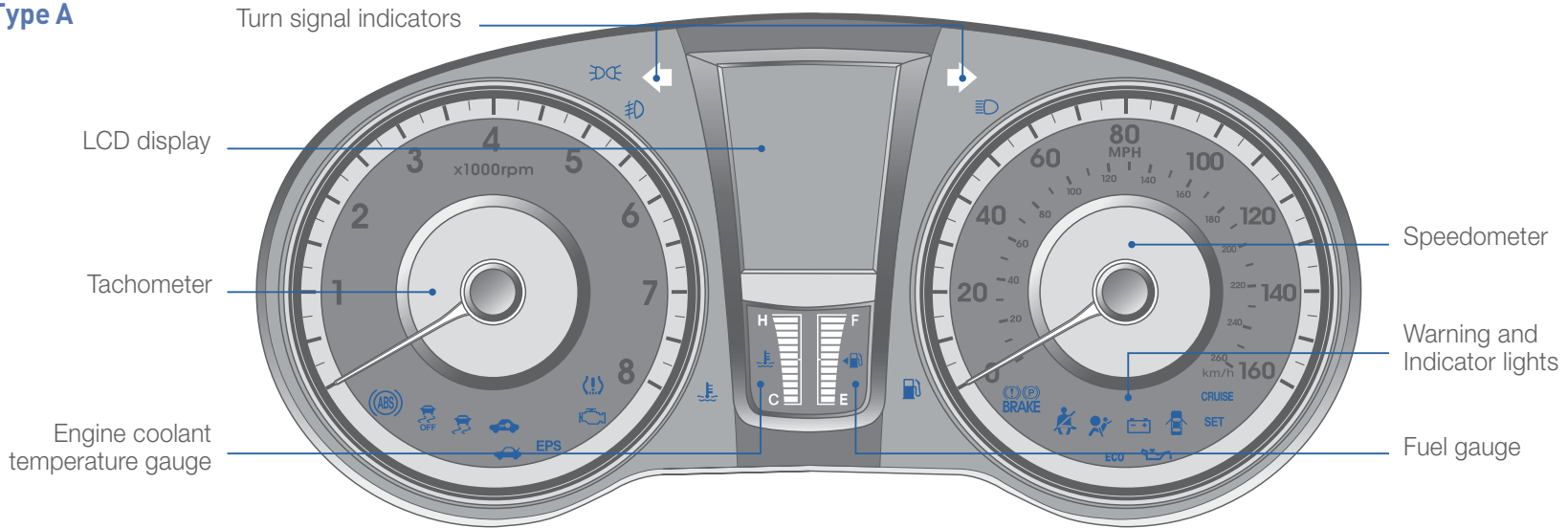
Press and hold the desired HomeLink button for 2 seconds and release. Repeat this sequence up to 3 times. If programming is successful, the garage door should open or close during this step.

For detail instructions including “Standard type” garage door, refer to your Owner’s Manual or visit [www.homelink.com](http://www.homelink.com)



## FEATURES AND CONTROLS

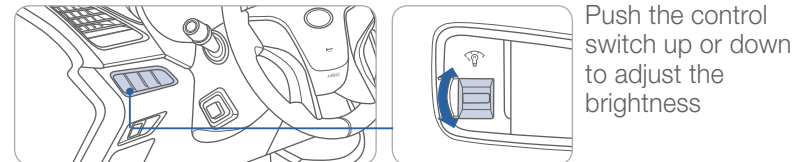
### Type A



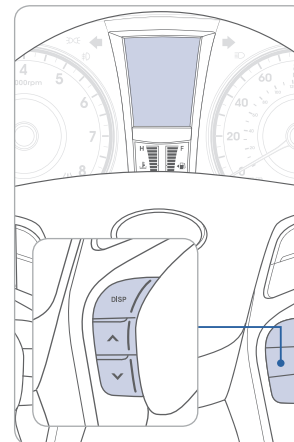
### WARNINGS AND INDICATORS

Air bag warning light	Parking brake & Brake fluid warning light	ABS warning light
Seat belt warning light	Low Tire Pressure Indicator / TPMS (Tire Pressure Monitoring System) malfunction indicator	
High beam indicator	Engine oil pressure warning light	Charging system warning light
EPS Electronic Power Steering system warning light	Door open warning light	Turn signal indicator
Immobilizer indicator	Shift pattern indicator	Low beam indicator
Trunk open warning light	Low fuel level warning light	ESC (Electronic Stability Control) indicator
ESC (Electronic Stability Control) OFF indicator	CRUISE Cruise indicator	SET Cruise SET indicator
Malfunction indicator light	Front fog light indicator	ECO Active ECO indicator
Light on indicator	Engine coolant temperature warning light	

### INSTRUMENT PANEL ILLUMINATION

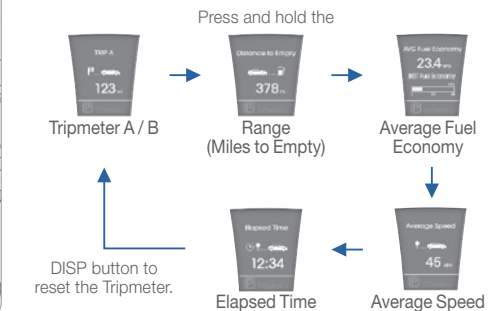


### TRIP COMPUTER



Press the DISP button to switch between Vehicle Settings and Trip Computer.

Press the ^ or v button to select functions as shown below.



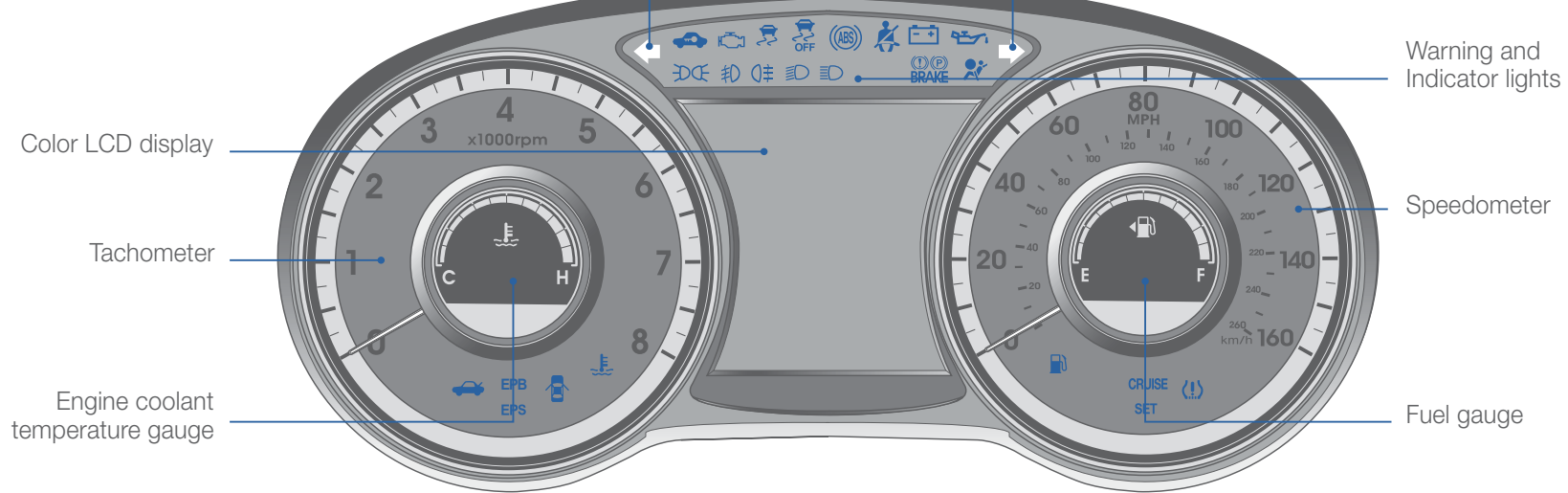




## FEATURES AND CONTROLS

### Type B

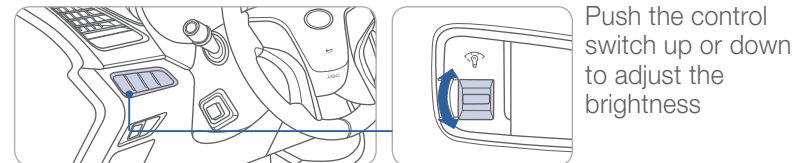
Turn signal indicators



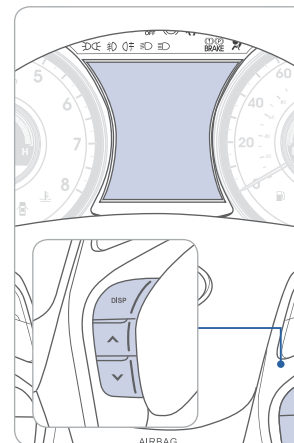
### WARNINGS AND INDICATORS

Air bag warning light	Parking brake & Brake fluid warning light	ABS warning light
Seat belt warning light	Low Tire Pressure Indicator / TPMS (Tire Pressure Monitoring System) malfunction indicator	
High beam indicator	Engine oil pressure warning light	Charging system warning light
EPS Electronic Power Steering system warning light	Door open warning light	Turn signal indicator
Immobilizer indicator	Shift pattern indicator	Low beam indicator
Trunk open warning light	Low fuel level warning light	ESC (Electronic Stability Control) indicator
ESC (Electronic Stability Control) OFF indicator	CRUISE Cruise indicator	SET Cruise SET indicator
Malfunction indicator light	Front fog light indicator	ECO Active ECO indicator
Light on indicator	Engine coolant temperature warning light	

### INSTRUMENT PANEL ILLUMINATION

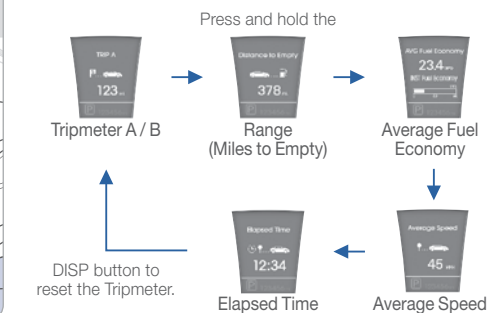


### TRIP COMPUTER



Press the DISP button to switch between Vehicle Settings and Trip Computer.

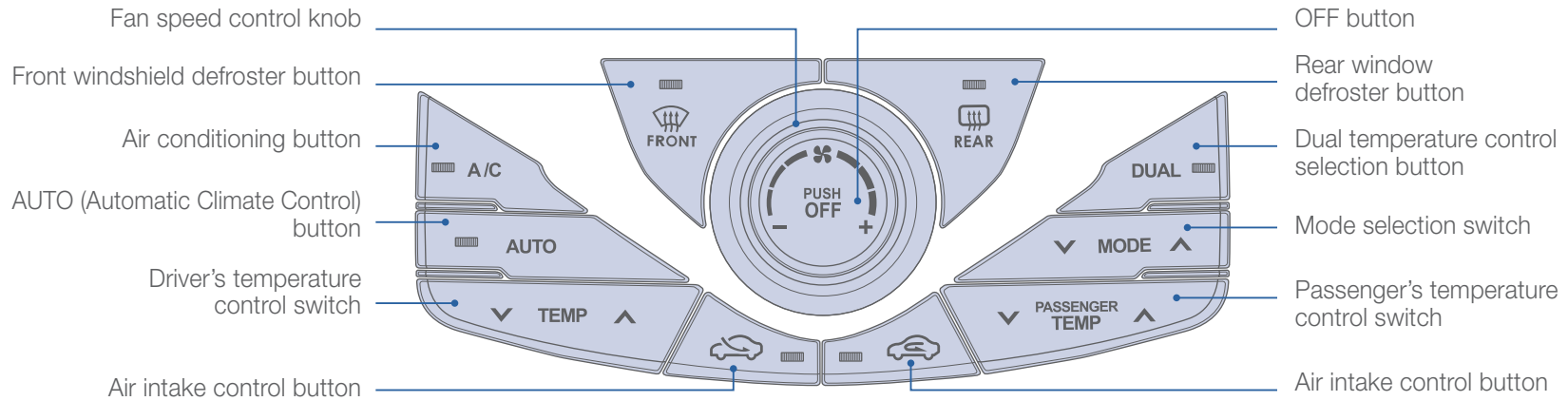
Press the ^ or v button to select functions as shown below.



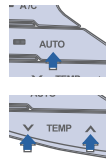
## FEATURES AND CONTROLS

### CLIMATE CONTROL

#### With Standard Radio



#### AUTOMATIC HEATING AND COOLING



1. Press the AUTO button.
2. Press the temperature button to the desired setting.

The modes, fan speeds, air intake and air-conditioning will be controlled automatically according to the temperature setting.

#### MODE SELECTION

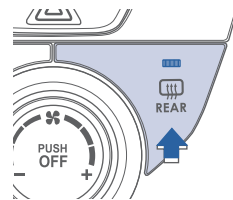
- Face Level
- ↓
- Bi Level
- ↓
- Floor Level
- ↓
- Floor Defrost Level

#### AIR INTAKE CONTROL

This is used to select outside (fresh) air position or recirculated air position.

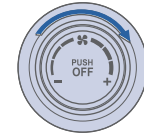
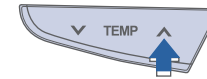
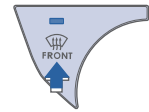
- Recirculated air position
- Outside (fresh) air position

#### REAR WINDOW DEFROSTER



Press to activate / deactivate the rear defroster.

#### DEFROSTING / DEFOGGING

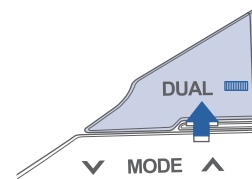


1. Press the front windshield defrost control.
2. Set the temperature control to the warmest setting.
3. Set the fan speed to the highest setting.

#### NOTE

To reduce the tendency of the glass fogging and improve visibility, keep the interior surface of the windshield clean by wiping it with a clean cloth and glass cleaner.

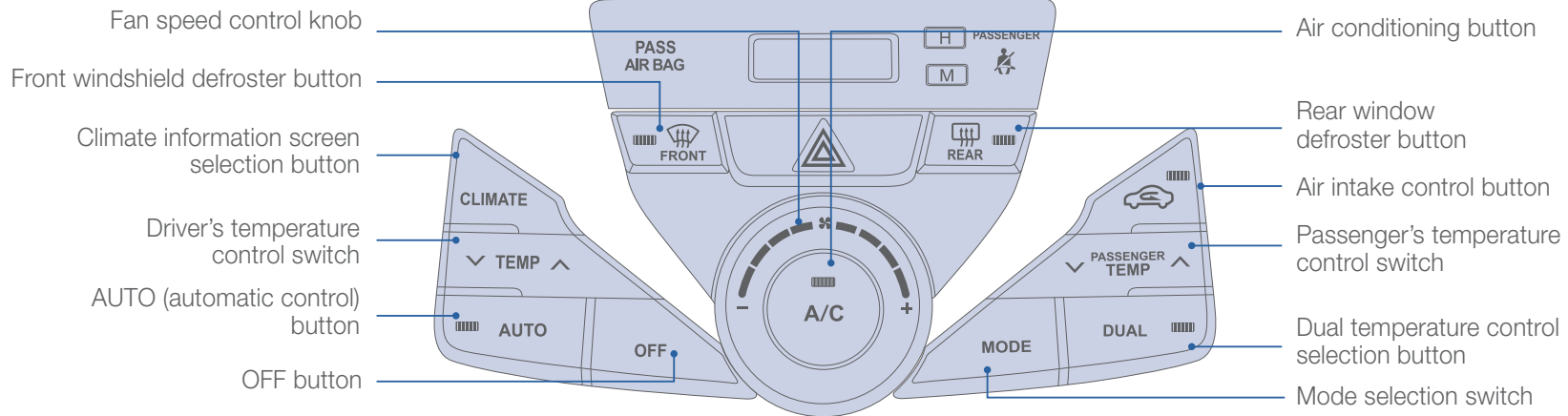
#### DUAL BUTTON



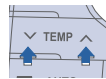
Press the DUAL button to operate the driver and passenger side temperature individually.

## FEATURES AND CONTROLS

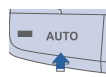
### With Navigation



### AUTOMATIC HEATING AND COOLING



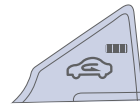
1. Press the AUTO button.



2. Press the temperature button to the desired setting.

The modes, fan speeds, air intake and air-conditioning will be controlled automatically according to the temperature setting.

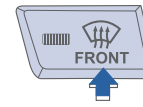
### AIR INTAKE CONTROL



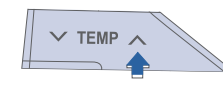
This is used to select outside (fresh) air position or recirculated air position.

- Outside (fresh) air position
- Recirculated air position

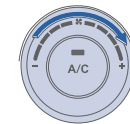
### DEFROSTING/DEFOGGING



1. Press the front windshield defrost control.



2. Set the temperature control to the warmest setting.



3. Set the fan speed to the highest setting.

#### NOTE

To reduce the tendency of the glass fogging and improve visibility, keep the interior surface of the windshield clean by wiping it with a clean cloth and glass cleaner.

### MODE SELECTION



Face Level



Bi Level

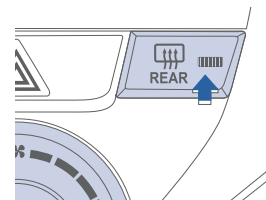


Floor Level



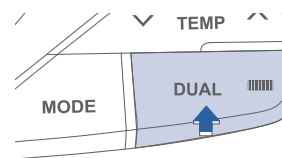
Floor Defrost Level

### REAR WINDOW DEFROSTER



Press to activate / deactivate the rear defroster.

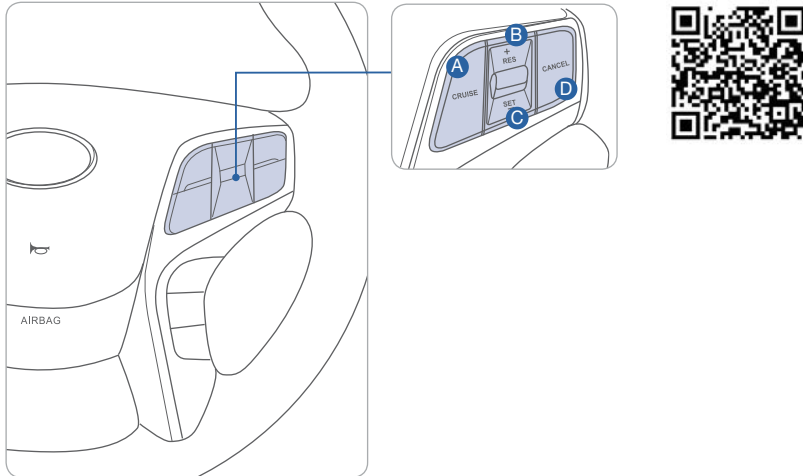
### DUAL BUTTON



Press the DUAL button to operate the driver and passenger side temperature individually.

## STEERING WHEEL CONTROLS

### Cruise control system



#### To set a cruising speed

1. Press CRUISE button **A** and the CRUISE indicator will illuminate in the instrument cluster.
2. Accelerate to desired cruising speed (above 25 mph). Press SET- button **C** and remove your foot from the accelerator pedal.

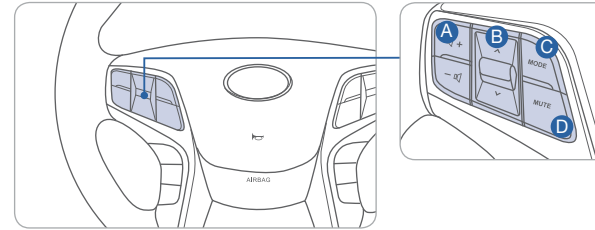
#### To accelerate or decelerate

Press RES + button **B** up to increase set cruising speed.  
Press SET - button **C** down to decrease set cruising speed.

#### To cancel cruising speed

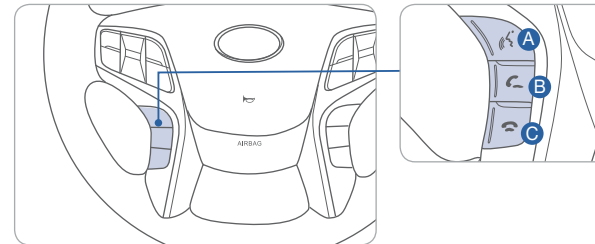
Press CANCEL button **D** or depress brake pedal, or press ON/OFF button **A**.

### Audio control



- A VOLUME**  
Raise or lower speaker volume.
- B SEEK / PRESET**  
Press to change presets.  
Press and hold to seek stations.
- C MODE**  
Change the audio source.  
Hold to turn Audio power ON/OFF.
- D MUTE**  
Mute the sound.

### Bluetooth control



- A TALK**  
Activate voice recognition.
- B CALL**  
Place and transfer call.
- C END**  
End call or cancel function.

If experiencing difficulty using Voice Recognition to place a call, be sure you are using the actual full contact name as entered in your phone book, not a casual or nick-name (e.g., if name was entered as "Robert Smith", say "Call Robert Smith", not "Call "Bob Smith").



## BLUETOOTH PHONE PAIRING

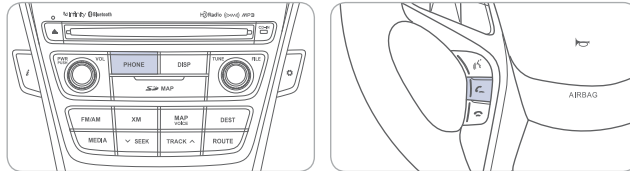
Pairing tutorials, phone compatibility and Operational tips can be found through the Smart QR code using the QR reader application on your Smartphone.



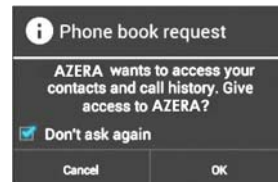
### Phone setup (pairing phone) with Navigation

**NOTE:** Vehicle must be parked to complete pairing process.

1. Press PHONE button or on the steering wheel remote control.

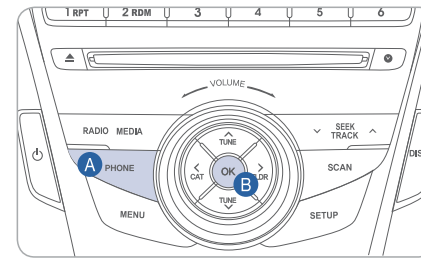


2. Press Yes button the screen.
3. Enable Bluetooth on your mobile phone. Select "AZERA" from the Bluetooth device list on your mobile phone.
4. Input the passkey displayed on the screen when applicable.
5. If your phone prompts a phonebook access request, it is advisable to check box "Always allow" or "Don't ask again".



### Phone setup (pairing phone) with Standard Radio

**NOTE:** Vehicle must be parked to complete pairing process.



1. Push the PHONE button **A**.
2. Press OK button **B** when prompted to turn Bluetooth on.
3. Enable Bluetooth on your mobile phone. Select AZERA from the Bluetooth device list on your mobile phone.
4. Input passkey displayed on the screen if applicable.
5. If your phone prompts a phonebook access request, it is advisable to check the box "Always allow" or "Don't ask again".



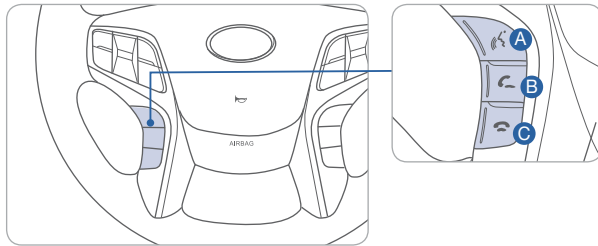
Please visit [www.hyundaiusa.com/Bluetooth](http://www.hyundaiusa.com/Bluetooth) for a list of compatible phones tested to work with Hyundai's Bluetooth® system.

## BLUETOOTH OPERATIONAL TIPS

In the following situations you or the other party may have difficulty hearing each other:

1. Keep the Bluetooth volume to a low level. High level volume may result in distortion and echo.
2. When driving on a rough road, high speeds and/or with the window open.
3. When the air conditioning vents are facing the microphone and/or when the air conditioning fan is at the max speed.

### Steering wheel bluetooth control



- A TALK**  
Activate voice recognition.
- B CALL**  
Place and transfer call.
- C END**  
End call or cancel function.

#### To Answer a Call:

- Press button on the steering wheel.

#### To Reject a Call:

- Press button on the steering wheel.

#### To Adjust Ring Volume:

- Use the VOLUME buttons on the steering wheel.

#### To Transfer a Call to the Phone

##### (Secret Call):

- Press and hold button on the steering wheel until the audio system transfers a call to the phone.

#### To Finish a Call:

- Press button on the steering wheel.

### Making a call using voice recognition:

The menu tree identifies available voice recognition Bluetooth® functions.

#### Calling by Name:

1. Press button.
2. Say the following command:
  - “Call <John>”: Connects the call to John.
  - “Call <John> on <Mobile/Home/Office>”: Connects the call to John’s Mobile, Home, or Office phone number.

#### Dialing by Number:

1. Press button.
2. Say “Call”.
3. Say “By number” when prompted.
4. Say desired phone numbers.
5. Say “Dial” to complete the number and make a call.

For complete list of commands, refer to your Owner’s Manual.

## VOICE RECOGNITION TIPS

Your vehicle is equipped with Voice Recognition technology which allows drivers to operate their phones without having to take their eyes off the road to minimize distractions.

Voice recognition performance may be affected if driving with windows and sun roof open; when the heating-cooling system is on; when passing in a tunnel or when driving on rugged and uneven roads.

Quick reference on using voice commands

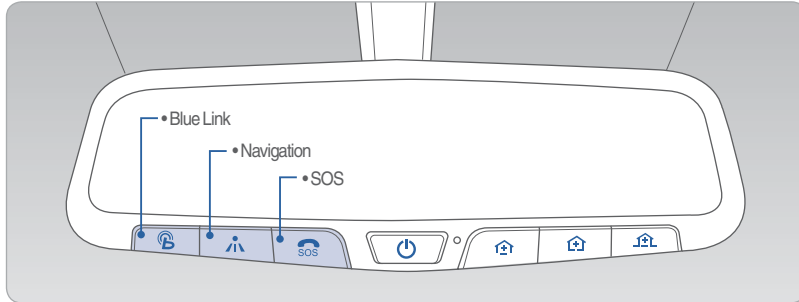
To start voice command. Press the key, the following commands are available:


Command	Function
More Help	Provides guidance on commands that can be used anywhere in the system
Help	Provides guidance on commands that can be used within the current mode.
Call <Name>	Calls <Name> saved in Contacts. Ex) Call “John Smith”
Dial <Number>	Call can be made by dialing the spoken numbers. Ex) Call “123”
Phone	Provides guidance on Phone related commands. After saying this command, say “Call History”, “Contacts” to execute corresponding functions.
Call History	Displays the Call History screen.
Contacts (Call by Name)	Displays the Contacts screen. After saying this command, say the name of a contact saved in the Contacts to automatically connect the cell.
Dial Number	Display the Dial number screen. After saying this command, you can say the number what you want to call.




## MULTIMEDIA



### BLUE LINK TELEMATICS SYSTEM



Press the  button for access to the voice-response menu of services. You have two options:

- You can say, "Main Menu" for a listing of main menu choices.
- You can directly select any of the listed menu items by saying its name.

			
New Destination	Information	Navigation	Vehicle Assist
Main Menu	Traffic Weather Valet Alert Main Menu	Gas Price Restaurant Ratings Daily Route Guide Main Menu	Roadside Assistance Service Link Main Menu

- Press the  button for navigation-related services.
- Press the  button for SOS Emergency Assistance.
- Refer to your Blue Link User's Manual for detailed information on system operation.
- For immediate assistance with subscription services, please call 1-855-2BLUELINK (1-855-225-8354).
- Please register your Blue Link at [www.MyHyundai.com](http://www.MyHyundai.com).

You must be an active Blue Link subscriber or within the initial free trial period to receive Blue Link services, including emergency notification services.

### Remote Door Unlock/Lock

#### Blue Link Mobile App



You can download the Blue Link mobile app to your compatible smart phone from the following sites:

- iPhone® — Apple® App Store
- Android® — Google Play
- BlackBerry® — BlackBerry® App World

With this feature, you can lock or unlock your vehicle doors from virtually anywhere by using the Blue Link mobile phone app, by dialing the toll-free number, or by using the Blue Link owner's website.

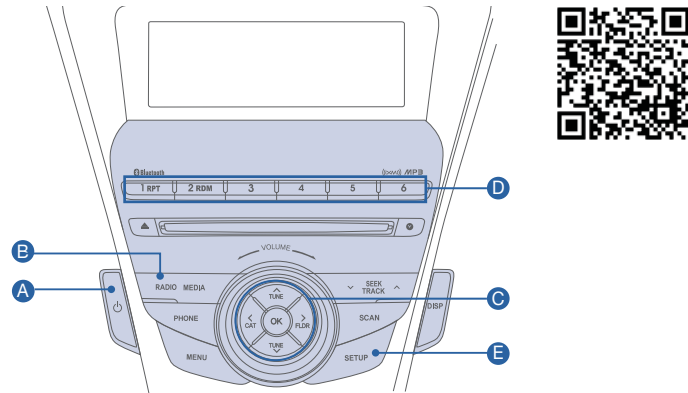
- To use this feature, you must have a Blue Link Personal Identification Number (PIN). To create or change your PIN, log on to [www.MyHyundai.com](http://www.MyHyundai.com).

#### To Activate Remote Door Unlock/Lock

- By Blue Link Mobile App: Select DOOR UNLOCK or DOOR LOCK, as desired.
  - Enter your Blue Link PIN.
  - The command to lock or unlock your doors will be sent to your vehicle.
- By phone: Dial toll-free 1-855-2-BLUELINK (1-855-225-8354).
- By web site: Log on to [www.MyHyundai.com](http://www.MyHyundai.com), select the Blue Link logo on the upper left-hand side.
  - Select Vehicle Status, then Remote Door Unlock/Lock.
  - Input your Blue Link PIN. (If you need time to get to your vehicle, specify a time delay before your vehicle will be unlocked.)



### STANDARD RADIO



Press POWER button **A** to turn radio on.

- TUNING/LISTENING TO CHANNELS
  1. Press Radio **B**.
  2. Press  $\wedge$   $\vee$  buttons **C** to desired channel.

#### NOTE

A clear view of the southern sky helps to ensure XM® radio reception.

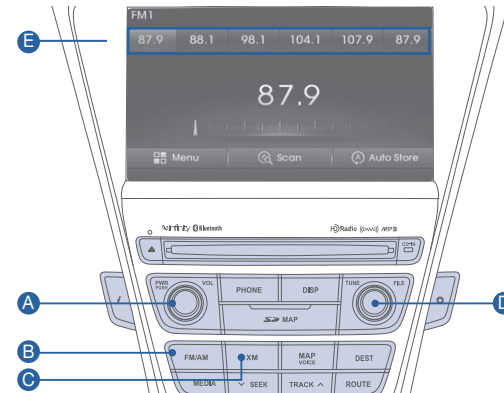
- SETTING PRESET MEMORY BUTTONS (FM/AM/XM®)
  1. Press and hold any preset button(1-6) **D** until audible beep is heard to store current channel.
- ADJUSTING THE SOUND CONTROL
  1. Press SETUP **E**.
  2. Press  $\leftarrow$   $\rightarrow$  buttons **C** to highlight “SOUND” and press OK button **C** to select.
  3. Use the arrow buttons **C** to highlight Bass/Middle/Treble and press Ok button to select.
  4. Press SETUP button **E** when done.

Please refer to your Navigation Manual for more detailed information on how to use your audio system. Complimentary XM® subscription ends three months following the vehicle date of sale.

Please contact XM® Radio at 1-800-XM-RADIO (1-800-967-2346) to renew your XM® subscription.



### NAVIGATION



Press POWER button **A** to turn radio on.

- TUNING/LISTENING TO CHANNELS
  1. Press FM/AM **B** or XM® **C**.
  2. Press TUNE **D** switch to desired channel.

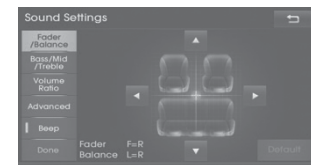
#### NOTE

A clear view of the southern sky is recommended to ensure XM® radio reception.

- SETTING PRESET BUTTONS
 

Six preset frequencies each for FM1/FM2/AM/XM modes can be stored manually.

  1. Select the band (FM1, FM2, AM, and XM) you want to store a station into.
  2. Select the desired station.
  3. Touch and hold one of the preset buttons **E** until audible beep is heard.
- ADJUSTING THE SOUND
  1. Touch the SOUND button on the main screen.
  2. Touch the arrows on screen to adjust desired sound setting.



Please refer to your Navigation Manual for more detailed information on how to use your audio system. Complimentary XM® subscription ends three months following the vehicle date of sale.

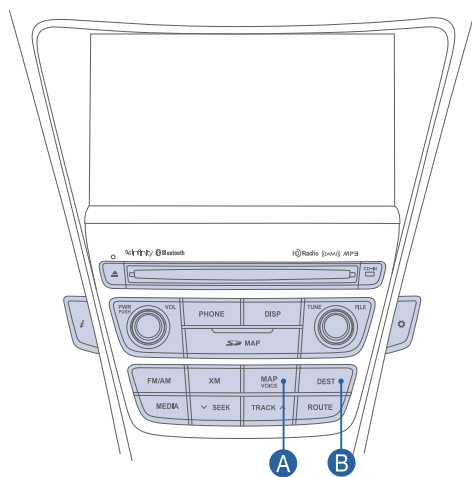
Please contact XM® Radio at 1-800-XM-RADIO (1-800-967-2346) to renew your XM® subscription.





## MULTIMEDIA

### NAVIGATION



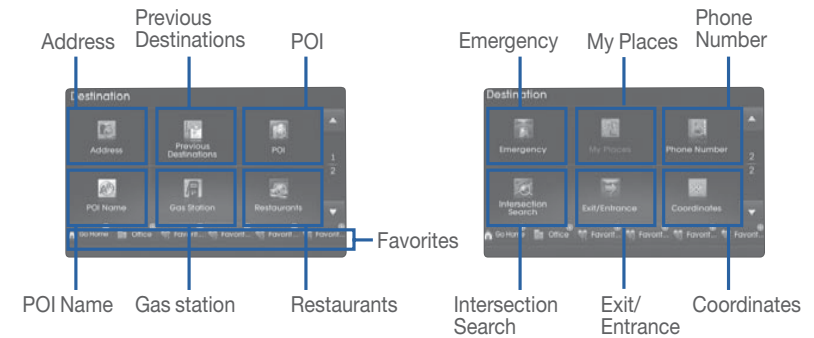
### Map position



Press MAP button **A** to display map position.

Refer to Digital Navigation System User's Manual for more details.

### Destination menu

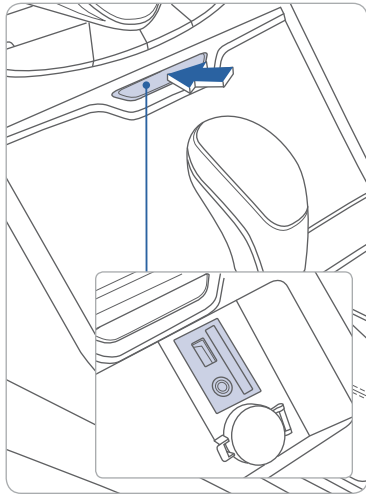


Press DEST button **B** to display destination menu.

- Previous Destinations: Search and select previous destinations.
- Address: Search destinations by selecting specific states/cities/roads.
- POI name: Search for POIs by name.
- Favorites: Store favorite places.
- POI (Point of Interest): Search for neighboring POIs near current position, scroll position, destination and city center.
- Gas Station: Search for gas station.
- Restaurants: Search for restaurants.
- Emergency: Search for emergency related facilities.
- My Places: List of saved My Places.
- Intersection Search: Search destinations by selecting street intersections.
- Phone Number: Search destinations by entering POI phone number
- Exit/Entrance: Search destinations by searching for expressway exits and entrances
- Coordinates: Search destinations by entering the latitude and longitude coordinates.

## MULTIMEDIA

### AUX, USB, AND iPod® PORT



Use the jack to connect an external audio device and listen to it through the audio system in your vehicle.

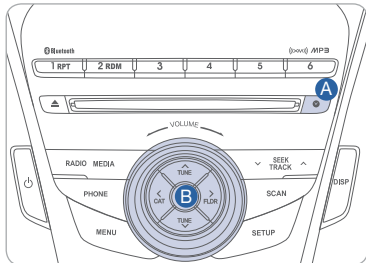
#### NOTE

To operate your iPod® through the vehicle's audio system, a Hyundai adapter cable is required. This cable can only be purchased at your local Hyundai dealer.

iPod® is a trademark of Apple Inc.

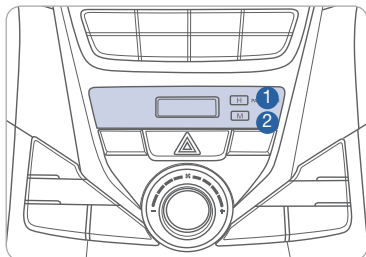
### CLOCK ADJUSTMENT

#### Standard Radio



1. Press and hold button **A**.
2. Press arrow buttons **B** to set the clock.

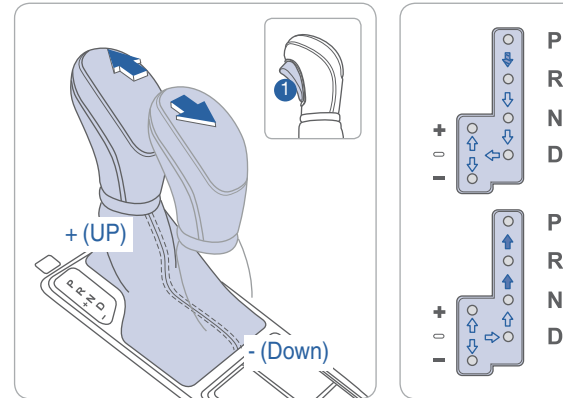
#### Navigation



**Hour 1**  
Pressing the H button will advance the time displayed by one hour.

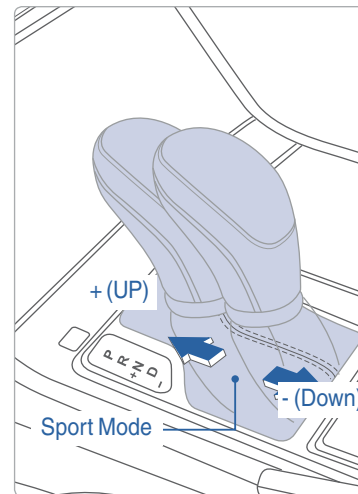
**Minute 2**  
Pressing the M button will advance the time displayed by one minute.

### AUTOMATIC TRANSMISSION



- (➡): Depress the brake pedal and the lock release button **1** when shifting.
- (➡): The lock release button **1** must be pressed while moving the shift lever.
- (➡): The shift lever can be shifted without pressing the lock release button **1**.

#### Sport mode

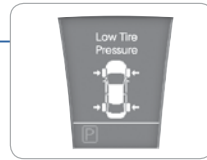
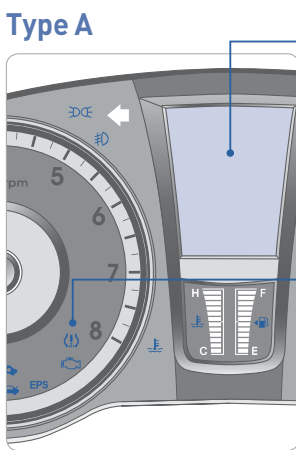


Move the shift lever from D (Drive) to the left gate to select.

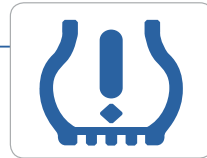
Move the shift lever forward (+) to upshift or rearward (-) to downshift.

## TIRE PRESSURE MONITORING SYSTEM (TPMS)

### Type A



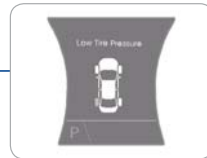
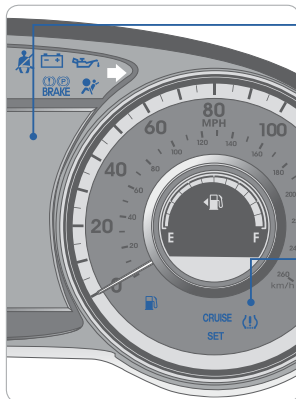
Low tire pressure location indicator



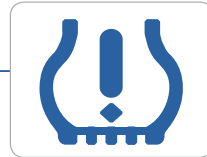
Low tire pressure indicator / TPMS malfunction indicator



### Type B



Low tire pressure location indicator



Low tire pressure indicator / TPMS malfunction indicator

### Low Tire Pressure Indicator

Illuminates if one or more of your tires is significantly under-inflated.

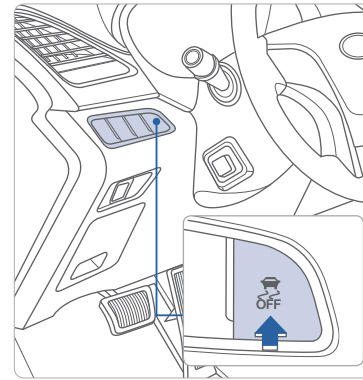
### Low Tire Pressure location indicator

Indicates which tire is significantly under-inflated by illuminating the corresponding position.

### TPMS Malfunction Indicator

Blinks for approximately one minute then remains illuminated when there is a malfunction with the TPMS system. Have the system checked by an authorized Hyundai dealer.

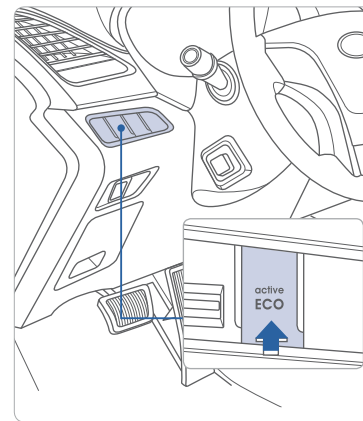
## ELECTRONIC STABILITY CONTROL (ESC)



The ESC system is an electronic system designed to help the driver maintain vehicle control under adverse conditions.

Press to turn ESC on or off.

## ACTIVE ECO SYSTEM



To conserve fuel, drivers can select Active ECO. This feature helps boost fuel efficiency by controlling the engine, transmission and air conditioning while absorbing acceleration response. Turn Active ECO off for sportier acceleration and transmission response. Press the Active ECO button to activate. The LED on the button and the ECO Indicator in the instrument cluster will illuminate.

### To improve your fuel efficiency:

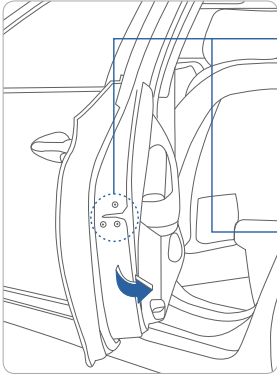
- Drive smoothly and accelerate at a moderate rate.
- Avoid heavy accelerations.
- Maintain steady cruising speed.
- Adjust the vehicle speed to the traffic condition and avoid speed changes.
- Avoid unnecessary braking.
- Keep the tires inflated to the recommended tire pressure.
- Don't idle the engine longer than necessary.



FEATURES AND CONTROLS

**CHILD-PROTECTOR REAR DOOR LOCK**

Allows or prevents opening the rear door from inside of the vehicle.



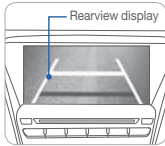
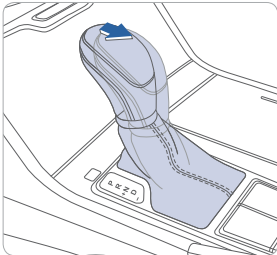
**Lock** (🔒)  
Insert a key into the hole and turn it to the lock (🔒) position.



**Unlock**  
Insert a key into the hole and turn it counterclockwise to the unlock position.



**REARVIEW CAMERA**



The rearview camera will activate when the ignition switch is ON and the shift lever is in the R (Reverse) position.



**Key Websites**

- Hyundai website - [www.hyundai.com](http://www.hyundai.com)
- Hyundai owner website - [www.myhyundai.com](http://www.myhyundai.com)
- Bluetooth phone compatibility - [www.hyundaiusa.com/bluetooth](http://www.hyundaiusa.com/bluetooth)
- Blue Link - [www.hyundaiusa.com/technology/bluelink](http://www.hyundaiusa.com/technology/bluelink)



**AZERA CUSTOMER DELIVERY CHECK LIST**

HYUNDAI OWNER	DEALERSHIP NAME
SALES CONSULTANT	DATE
VIN	PREVIOUS VEHICLE

**BEFORE DELIVERY**

- CONFIRM "GOOD BATTERY" USING GR8 AND STAPLE TEST TICKET HERE
- SET TIRE PRESURE LF\_\_\_ RF\_\_\_ RR\_\_\_ LR\_\_\_
- VERIFY VEHICLE IS CLEAN, IN GOOD CONDITION, FREE OF CHIPS AND SCRATCHES · CLEAN WINDSHIELD AND BACK WINDOW
- ENSURE FLOORMATS ARE SNAPPED INTO PLACE

Sales Consultant	Date	Sales Manager	Date
Customer		@	Date
Email			