

COMMONWEALTH FOUR-FORTY



“The Car With the Foundation”



MANUFACTURED BY

**COMMONWEALTH
MOTORS COMPANY**

CHICAGO, U.S.A.

COMMONWEALTH FOUR-FORTY



"An unusual car—marked so by the character of its owners as well as by its built-in-personality. 'The Car with the Foundation,' having unusual qualities in Power, Comfort and Low Cost of Operation."

The remarkable way in which the major units of the COMMONWEALTH FOUR-FORTY have been co-ordinated in its design (no one unit surpassing in any great degree the other, each in itself a proven achievement) indeed stamps it "A COMPELLING VALUE."

COMMONWEALTH FOUR-FORTY

Foreword



THE COMMONWEALTH FOUR-FORTY—
*described in this catalogue—is indeed “A
Distinctive Automotive Achievement.”*

*For five years now the COMMON-
WEALTH MOTORS COMPANY has been
making profit-earning automobiles. The past two years
our growth has been abnormally large, and in nearly
every civilized country our product has proven a real
standard of value.*

*The Commonwealth organization includes fourteen
major departments within its administrative circle. The
Managers of each are men of proven capacity and unusual
ability, the cardinal feature collectively being the positive
way it has brought our products to the front on sheer merit.*

*C. C. DARNALL, our President and leading spirit,
has long been recognized as a rare organizer and this
particular company's strength is strongly characteristic
of his executive ability.*

COMMONWEALTH MOTORS COMPANY

General Offices: CHICAGO, U. S. A.
Factories: JOLIET, ILL., U. S. A.

Member National Automobile Chamber of Commerce, Inc.

“The Car With the Foundation”

COMMONWEALTH FOUR-FORTY

The Commonwealth Four-Forty

••

Appearance

The qualities of fineness, spaciousness, distinctiveness, and refinement in detail are values radiated in the life-long appearance of the COMMONWEALTH FOUR-FORTY that gives its owner added enjoyment and usefulness.

The body lines add smartness to the evident durability of the Chassis. These forces of attraction so smoothly combined, offer a new field of interest to motorists who must have their vehicle reflect utmost discriminating judgment.

Riding Qualities

Weight economy and its efficient distribution over a wheel base of 117 inches, promotes supreme riding qualities and comfort in the COMMONWEALTH FOUR-FORTY. Improved and perfected spring construction commands positive alignment, adding thousands of miles to tires,—also producing a quietness in keeping with substantial constructive principles.

Handling Qualities

A certain charm of action reflected in the delightful flexibility of the COMMONWEALTH FOUR-FORTY does more perhaps to instill pride of ownership than any other quality. Liveliness and complete responsiveness are vitally apparent in its alert performance.

In the country the endurance of its power range and its capacity for hill climbing become distinctive sources of delight.

On city streets, in the midst of swirling traffic, these same features are evidenced in its quick getaway and continual ability to remain constantly under control.

All controls are carefully located to provide easy access, yet with no effect of cramping the driving compartment.

Material Qualities

From the largest to the smallest item of material used in the construction of the COMMONWEALTH FOUR-FORTY no effort is spared to determine each part's worthiness.

“The Car With the Foundation”

COMMONWEALTH FOUR-FORTY

Angle Side Touring



Proven metals and processes, humanly perfect workmanship, used within the area of the COMMONWEALTH shops (parts produced by other sources, having unusual care exercised in their production) assures a consistently high standard.

The result of maintaining such strict demands on the grade of material becomes an added strength to every other dominant quality that enables each part to attain a degree of perfection rarely found in moderately priced motor vehicles.

Craftsmanship Qualities

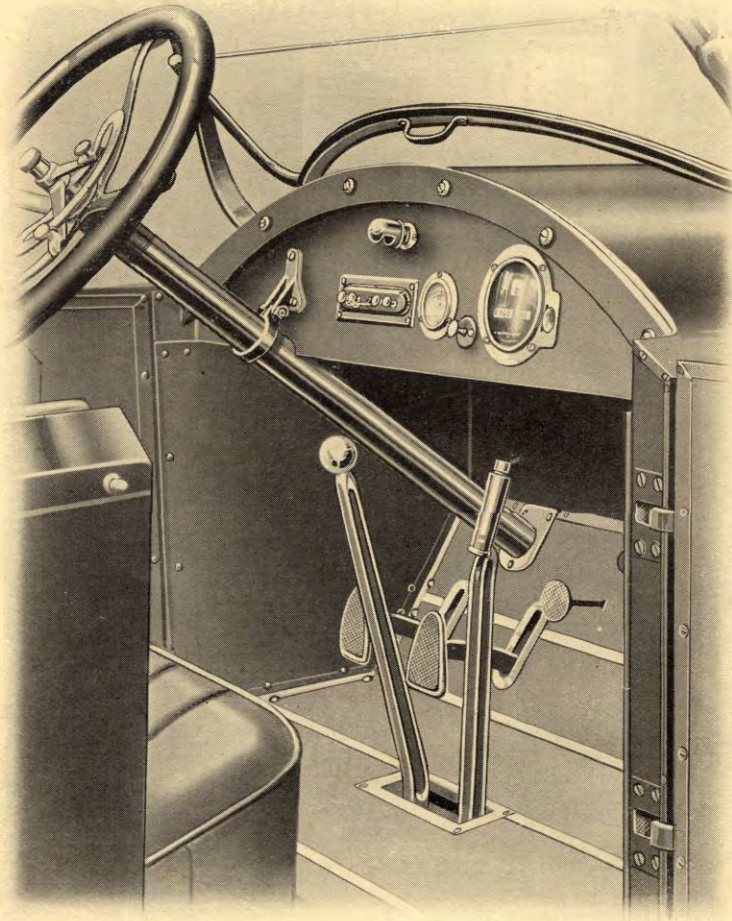
The broad application of character materials in the COMMONWEALTH FOUR-FORTY has been accomplished to effect simplicity in design without sacrifice or limitation of the functioning of any part or component unit. Modern production methods and facilities have acquired for the finished product a "Built-in-Personality."

There is ample room everywhere as well as strength. This is immediately evident on inspection, while closer scrutiny reveals a considerable reserve of each.

"The Car With the Foundation"

COMMONWEALTH FOUR-FORTY

Driver's Compartment Touring



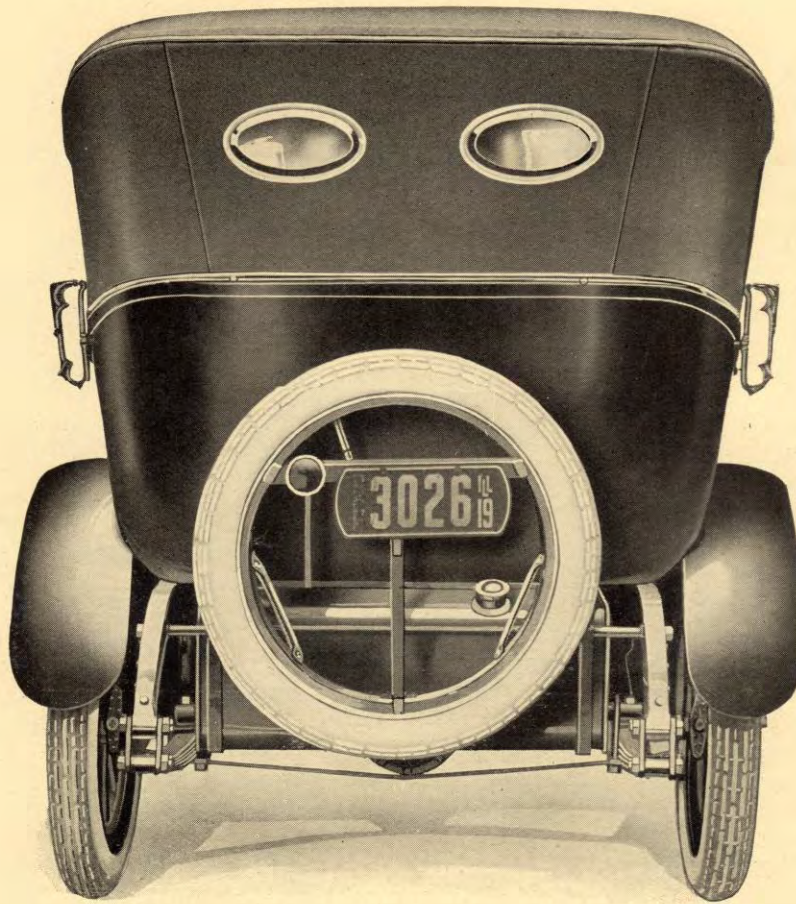
Driver's Compartment—note accessibility to all controls

These qualities of craftsmanship are held as a highly important factor in the COMMONWEALTH FOUR-FORTY by the buyer who is seeking the utmost in refinement without slighting gross strength. In this respect, as well as in every other, the COMMONWEALTH FOUR-FORTY is regarded as a road master.

“The Car With the Foundation”

COMMONWEALTH FOUR-FORTY

Rear View Touring



Economic Dominance

The distinctive satisfaction offered in unusual amount in the respective material qualities of the COMMONWEALTH FOUR-FORTY, are greatly increased in value by the remarkable low cost of operation that has been made possible.

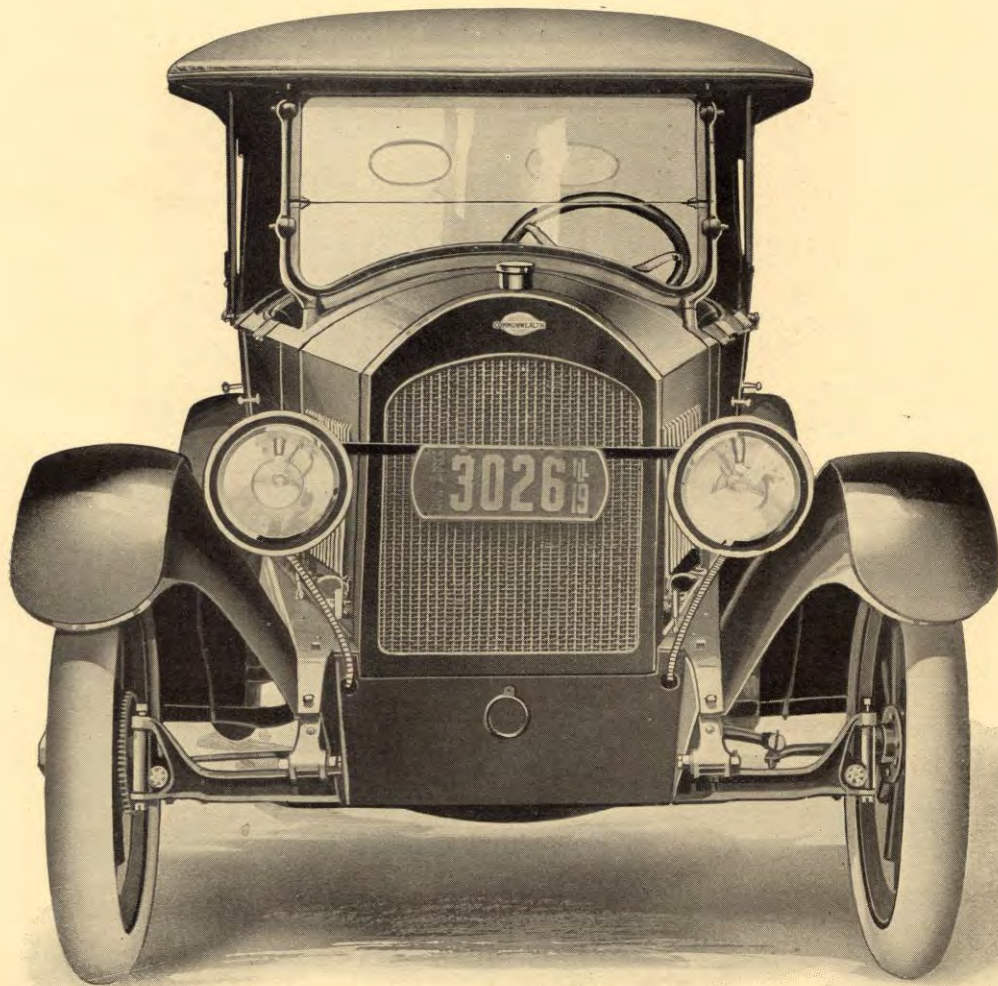
Better than twenty miles on a gallon of gasoline—800 to 1,000 miles on a gallon of lubricating oil are assured results, while it is not an unusual record to exceed even these figures.

Tire mileage everywhere is exceeding the manufacturer's guarantee of 6,000 miles for fabric casings and 8,000 for cord casings.

“The Car With the Foundation”

COMMONWEALTH FOUR-FORTY

Front View Touring



Unquestionably this low cost of operation has its full share in making the COMMONWEALTH FOUR-FORTY "A Compelling Value."

Engineering Policies

The COMMONWEALTH FOUR-FORTY Chassis is a standardized value, a highly developed machine, efficient and complete in every detail. Our engineering policies are determined to remain consistent with this industry's progress and reflect in the present product thorough alertness to correct, proven automotive principles.

"The Car With the Foundation"

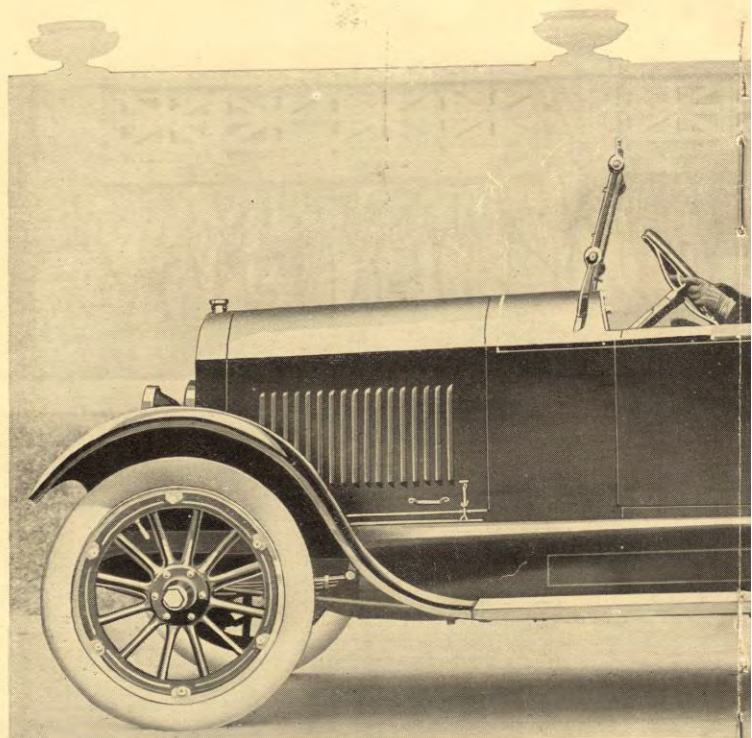
COMMONWEALTH

Built in America —

*These
Are
Values*

• •

*Fineness
Durability
Performance*



“A Distinctive Automobile”

There is a certain pride of ownership built in this new description in mere terms of materials, workmanship, and sphere, in which the elements of the road, load, weather, and effort on the part of the driver. Ask for a demonstration or just ride in it, then you will understand why the “Commonwealth”

AT HOME ABROAD

TH FOUR-FORTY

— *Girdles the World*



*Responsive
Qualities
in Speed
Range and
Hill-
Climbing
Power*

• •

5-Passenger

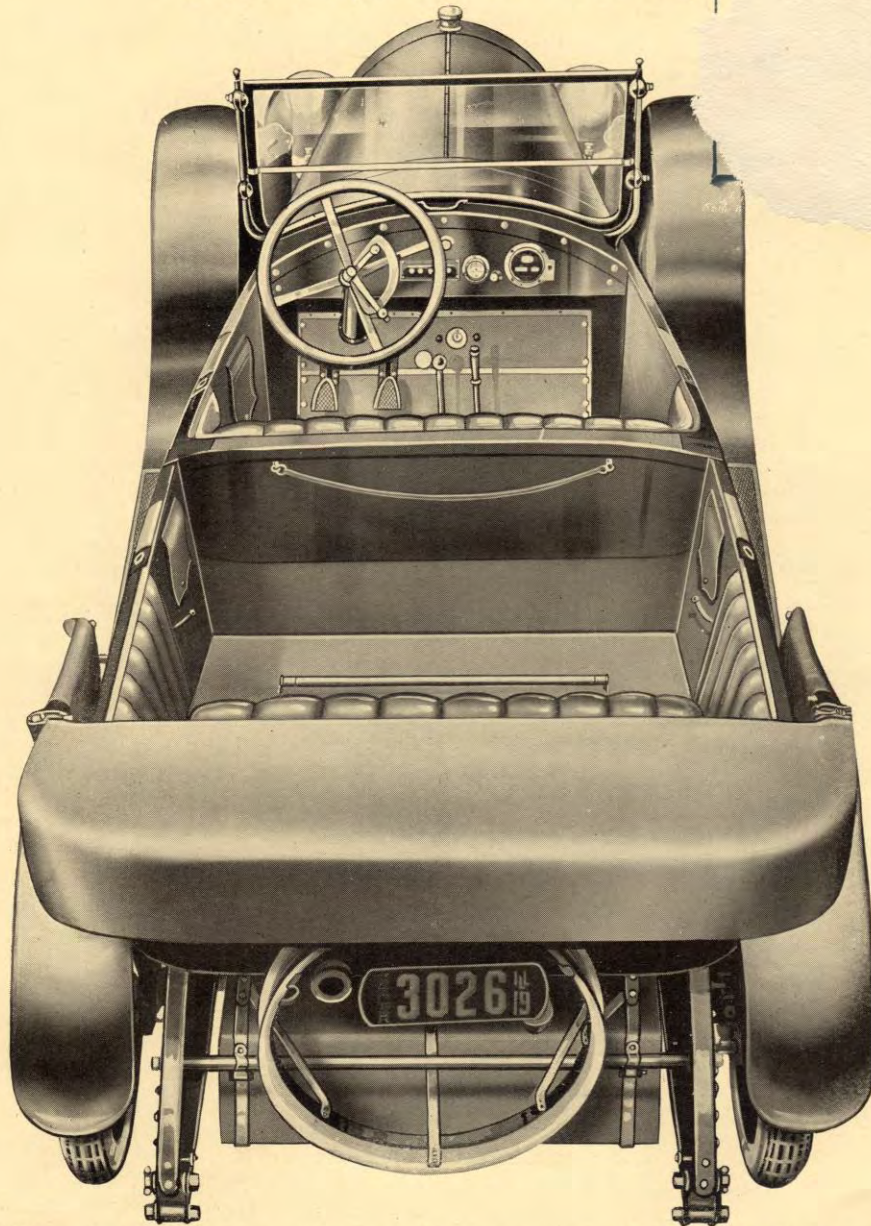
notive Achievement”

“COMMONWEALTH FOUR-FORTY” that is beyond any or anything of the sort. It is more a distinct atmosphere or season conditions are completely mastered without tention as soon as your dealer can arrange it, drive it—COMMONWEALTH FOUR-FORTY” is “A Compelling Value.”

ABROAD AT HOME

COMMONWEALTH FOUR-FORTY

Bird's-eye View Touring



The qualities of fineness, spaciousness, and distinctiveness are shown in this birdseye view of the COMMONWEALTH FOUR-FORTY to great advantage. The front compartment provides absolute freedom for operating comfort, and there is an unusual depth of foot room in the rear. The smart body lines are also clearly developed, emphasizing its generous dimensions.

“The Car With the Foundation”

COMMONWEALTH FOUR-FORTY

Specifications

Motor

Type—L head; removable head, 4-cylinder cast en bloc.

Pistons—Are of standard trunk construction, having three rings (all at the top) and pin of ample proportion to take care of the wear. Each are accurately ground to gauge size, which insures absolute dimension and a perfect fit within the cylinder wall.

Connecting Rods—H section drop forged, holding piston bearings.

Crank Shaft—Drop forged 2 inches in diameter, extremely heavy type with proportionately large bearings. Rear bearing $3\frac{7}{8}$ inches long, $2\frac{1}{2}$ inches in diameter; front bearing $3\frac{1}{4}$ inches long, $2\frac{1}{2}$ inches in diameter; connecting rod bearings $2\frac{3}{16}$ inches long and 2 inches in diameter.

Valves—Eight in number, poppet type, 4 intake, 4 exhaust, securely seated.

Crank Case—Substantially heavy well ribbed. Lower half is of pressed steel and provided with oil troughs under each connecting rod to insure continuous lubrication under all conditions.

Front End Drive—Gears in front end of motor drive cam shaft and generator, have hectical cut teeth and run in oil; this arrangement conducive to long life and smooth, silent operation.

Exhaust Manifold—Of the double duct type practically eliminating the possibility of backfiring; also reduces back pressure and lengthens the lip of the valve by instantly carrying away the heat.

Gasoline System

Tank—Is made of terne metal, capacity 17 gallons (sufficient to run 340 miles without refilling).

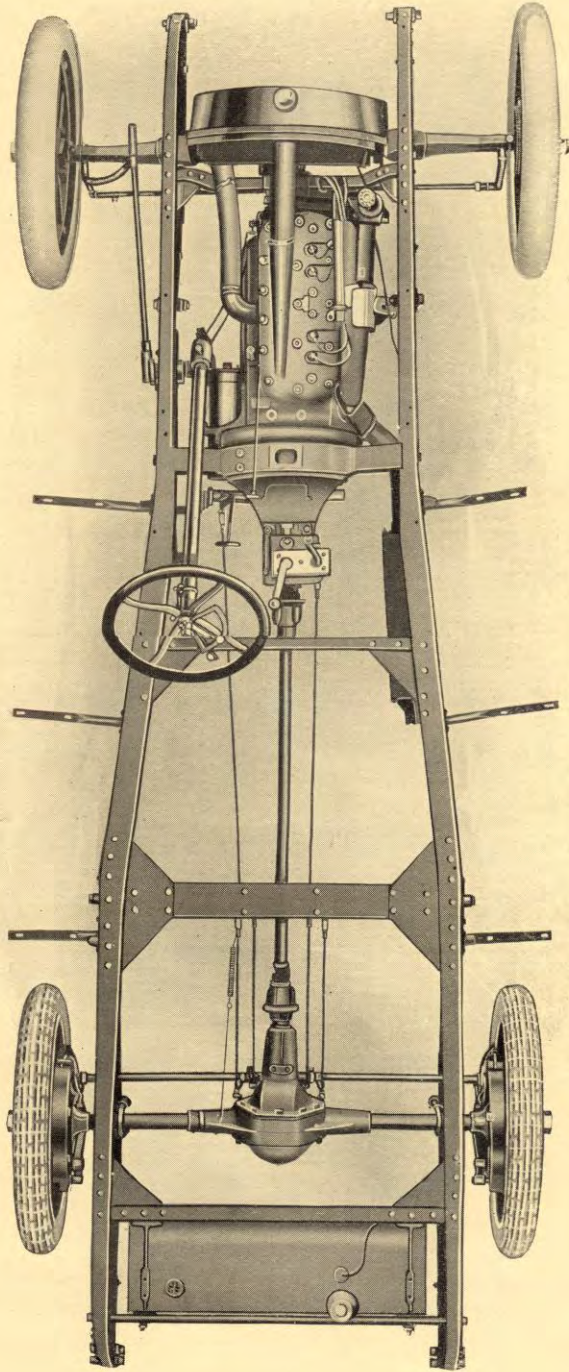
Pressure—The Stuart Vacuum System is used.

Intake Manifold—The carburetor is placed so close to the motor that a manifold only 2 inches in length is needed to conduct the mixture to the valve passage in the cylinder block through which it passes into the cylinder proper.

Carburetor—Carter three jet carburetor, provided with stove. This type is not adjustable, but on account of its close proximity to the motor, and that hot air is drawn from around the exhaust manifold (naturally preheated) it is unaffected by weather conditions.

“The Car With the Foundation”

COMMONWEALTH FOUR-FORTY



Top View Chassis

The COMMONWEALTH FOUR-FORTY—"The Car with the Foundation"—is built on a frame unusually strong and extra reinforced. Year after year of extra service from all major units results from this great base strength, without clumsy overweight.

Possessed of this remarkable chassis, COMMONWEALTH owners enjoy absolute riding comfort, continuous quiet and smooth operation, and practical freedom from vibration.

This 1920 COMMONWEALTH Chassis has even greater strength than any previous COMMONWEALTH model.

"The Car With the Foundation"

COMMONWEALTH FOUR-FORTY

Ignition System

Generator—Dyneto generator is used to charge battery from which the electricity for ignition is obtained.

Ignition—The Atwater Kent distributor and coil are used to furnish the spark plugs with the firing current. This combination provides the best, most efficient and reliable ignition system procurable.

Motor Oiling System

All bearings, cylinders, pistons, cams and valves are lubricated by the splash system, which is applied in the most approved way. The oil pump takes the oil from the well through a strainer and feeds it to four troughs located directly below each connecting rod. A lug extends below each rod and dips into these troughs, thereby splashing it to all parts of the crank case, producing a mist, which passes through holes provided for this purpose, lubricating all parts thoroughly, such as tappet guides, valve stems, piston pins, etc.

Cooling System

The cooling system is accomplished by the well known Thermo-Syphon System. The water jackets or compartments in the motor are of large area, permitting extremely free circulation. The entire system holds five gallons of water, a sufficient quantity to keep the motor cool even under the most exacting conditions. A 16-inch 4-blade fan is also used. The radiator was particularly designed to consistently and substantially deliver service in conjunction with the motor.

Starting and Lighting System

The starting motor is another proven product manufactured by Dyneto, equipped with Bendix drive, and is operated by a switch placed on the floor board in the driver's compartment.

The instrument board contains lighting and ignition switches, also the ammeter, cowl-light, and speedometer; also a hand adjustable choke for carburetor. The two head lights are furnished with dimmers on an independent circuit; the tail light is lighted in conjunction with either. The entire ignition and lighting system can be locked from lock, located on the dash.

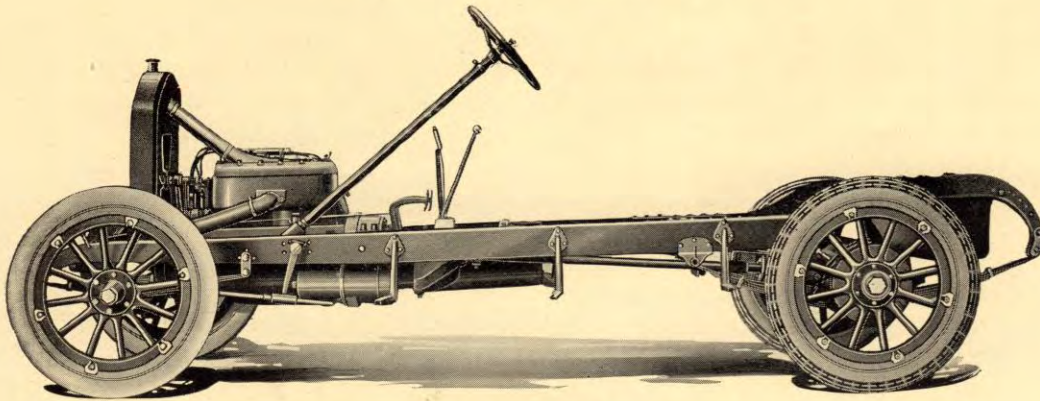
Clutch

The Clutch is a 10-inch Borg & Beck, easily adjusted, of the friction disc type, equipped with a sufficiently heavy spring to insure positive drive.

“The Car With the Foundation”

COMMONWEALTH FOUR-FORTY

Side View Chassis



Transmission

The transmission is what is known as the selective sliding gear type, three speeds forward and one reverse; gears of case hardened nickel steel; gear shafts are nickel steel, carried on annular ball bearings, except the jack shaft which is carried on bronze bearings. The clutch shaft is carried in the fly wheel by annular ball bearings.

The transmission is bolted to the fly wheel, forming a unit power plant, the entire member hung by three-point suspension.

Chassis Detail

Wheel base, 117 inches. Frame, 5-inch channels co-ordinating the latest type construction; flanges varying from $1\frac{1}{2}$ inches to 3 inches in width, all cross members strongly gusseted, providing absolute rigidity.

Springs

Front—34 inches long, $1\frac{3}{4}$ inches wide.

Rear—56 inches long, 2 inches wide, both semi-elliptic type. Ground and polished, properly graded to carry the load with greatest flexibility. The rear springs are also underslung. This, combined with the unusual wheel base, affords constant comfortable riding qualities.

Fenders

Fore and aft, 10 inches wide with 1-inch crown; pressed from 20-gauge stock, double coated enameled baked, finished with high permanent luster. They are supported by rigid irons, providing minimized vibration, connected by strong running boards, each firmly attached to three step handers $\frac{3}{16}$ -inch thick, hot riveted to the frame.

“The Car With the Foundation”

COMMONWEALTH FOUR-FORTY

Wheels

The wheels are of approved artillery type, 12 spokes each, made from selected white hickory. They are equipped with 32 x 4-inch demountable rims. Hubs are secured by well positioned strong wheel bolts. Such sturdy construction provides an extreme margin of safety. Wire wheels are extra, \$125 for set of five.

Front Axle

One-piece eye beam, drop forged. King bolts oiled by spring oilers. Bower ball bearings used in front wheels.

Rear Axle

Full floating type, wheels carried on Bower roller bearings; differential on Hyatt roller bearings; pinion shaft on New Departure ball bearings. The gear ratio is $4\frac{1}{4}$ to 1. Gears are of the spiral bevel type. The brake drums are 12 inches in diameter, with $1\frac{3}{4}$ inch face. The service brake is external contracting. The emergency brake is internal expanding.

Touring Body

Comfortable five-passenger type, smart lines, all nickel trimmings, hand cut and fitted upholstery, seats extra reinforced with deep springs; front compartment floor boards covered with linoleum, rear compartment floor and toe boards covered with carpet, all fastened with white metal stripping, door handles heavily nickel plated, full size.

Other Details

Top—Practical one-man type, two French plate glass windows in rear securely fastened to metal frames.

Wind Shield—Set close to cowl, two glasses, both adjustable. Curtains of good material, full cut large window panels hung from nickel plated rods inserted in the body, made tight with patent snap fasteners.

Horn—Electric driven, button located on top of steering column.

Steering Wheel

Hand made, 18 inches in diameter; gas and spark control handles integral with one-piece quadrant.

Tire Carrier

Hung by 2-point suspension, fastened to the rear of the frame, complete with spare rim, patent lock device. Complete set of tools, jack, and positive action tire pump are furnished.

“The Car With the Foundation”

COMMONWEALTH FOUR-FORTY

Commonwealth Dealers Service Policy



THE COMMONWEALTH MOTORS COMPANY, through its dealers, aims to give all purchasers of its cars uniformly fair, courteous and business-like treatment to constantly assist them in every reasonable way to keep their cars in sound running condition. *The principles of this policy are:*

- FIRST—To fulfill wholly the definite obligations assumed under the manufacturer's warranty.
- SECOND—To furnish repair parts as promptly as possible at fair market prices.
- THIRD—To submit all repair parts to same rigid inspections at factory as original materials.
- FOURTH—To maintain complete facilities for making adjustments and repairs in a prompt manner with competent labor at fair cost.
- FIFTH—To make inspections and adjustments, not necessitated by neglect or abuse, free of any charge, twice each month for the first three months following the date of delivery of a new car to purchaser, and once each month thereafter as long as it remains in the original owner's possession.
- SIXTH—To furnish printed instructions in the operation and care of our cars.
- SEVENTH—When any charge work is to be done and the cost can be estimated in advance, the owner, upon request, will be advised of the amount of the charge before work is commenced, and should sign an order as dealer's authority to proceed.
- EIGHTH—For service replacement on engines, starters, batteries, ignition, generators, lamps, carburetors, tires, rims, or other trade accessories that are not made by COMMONWEALTH MOTORS COMPANY, application should be made to nearest Service Station of the maker of such. Our dealers are provided with a list giving names and addresses of such manufacturers.
- NINTH—To help our dealer carry out the high intent of this Service Policy, all COMMONWEALTH owners are requested to furnish full information necessary to the prompt and proper filling of orders, personally or in writing.

COMMONWEALTH MOTORS COMPANY
CHICAGO, U. S. A.

"The Car With the Foundation"

Warranty

Standard warranty as approved in form by the
NATIONAL AUTOMOBILE CHAMBER OF COMMERCE, INC.



THIS IS TO CERTIFY that we, the COMMONWEALTH MOTORS COMPANY—

Warrant each new motor vehicle manufactured by us, to be free from defects in material and workmanship under normal use and service, our obligation under this warranty being limited to making good at our factory any part or parts thereof which within ninety (90) days after date of delivery of such vehicle to the purchaser, be returned to us, transportation prepaid, and which our examination shall disclose to have been thus defective.

This warranty shall not apply to any vehicle which shall have been repaired or altered outside of our factory in any way so as in our judgment to affect its stability or reliability, nor which has been subjected to misuse, accident or negligence.

We make no warranty whatever in respect to any trade accessories used in our equipment, inasmuch as they are usually warranted separately—by their respective factories.

Parts or accessories substituted for those which are standard in COMMONWEALTH Cars automatically removes any obligation assumed by the manufacturer under this warranty.

COMMONWEALTH MOTORS COMPANY

COMMONWEALTH
MOTOR CARS
ARE
CHARACTER
MOTOR CARS THAT
GIRDLE THE
WORLD

